

Data Sheet

Pluggable Terminal Block (Header) w. Latch

Pitch: 3,50 mm

Serie: A14G118

Customer Information for special Item

EDCON Customer : 0

Customer Version No. : 0

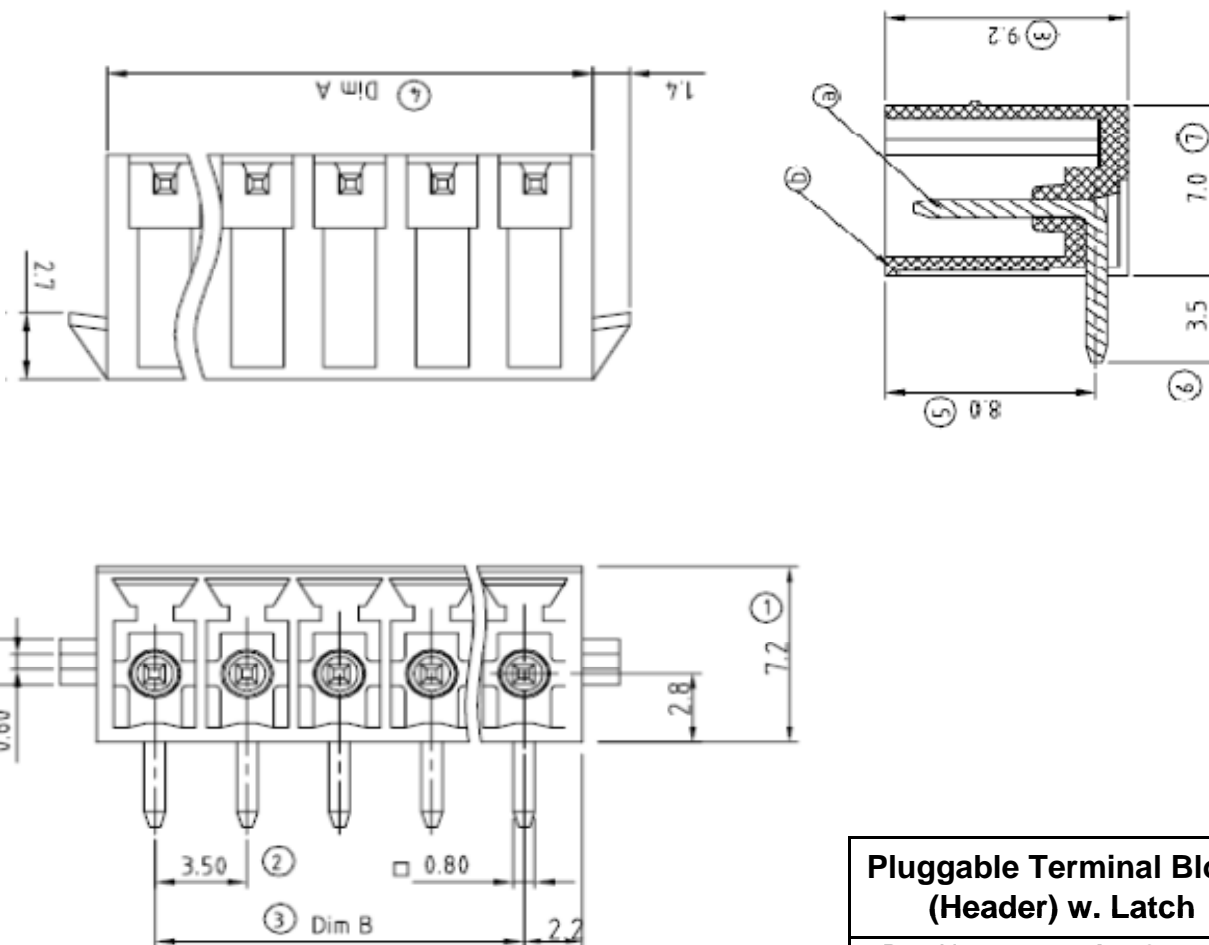
EDCON-COMPONENTS



Technical Description

Electrical	UL	VDE
Rated Voltage	300Volt	300Volt
Rated Current	10A	10,5A
Withstanding Voltage	1,6KV	2,5KV
Mechanical		
Operating Temperature	. -40°C ~ +115°C	
Dimensions		
Pitch (mm)	3,50	
Poles	2 ~ 24 Pos.	
Materials		
Terminal Housing	Thermoplastic, UL94V-0	
Pin Header	Copper Tin Plated	

Drawing (Dimension in mm)



Pluggable Terminal Block (Header) w. Latch

Part No.: **A14G118**

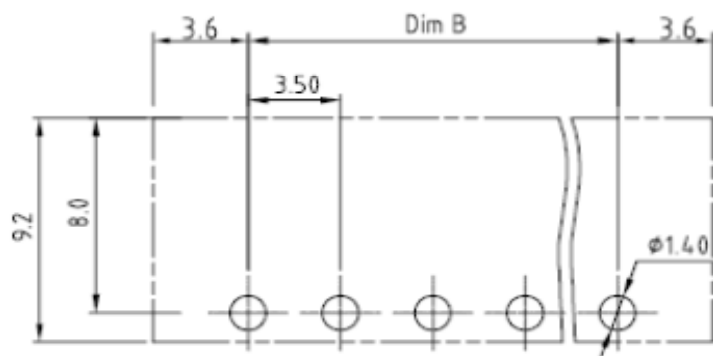
Customer:

DRW:	Jason	CHKD	Wilson	MATL:	Wilson	TOLERANCE	Mason	DATE	15.03.2015
APPD:	Schumi			FINISH	Jamy		Sheet No.		1 from 4

EDCON-COMPONENTS



PCB Layout



Dimensions (mm)

No. of Pos.	A	Tol. A	B	Tol. B
02	7,90	± 0,15	3,50	± 0,15
03	11,40	± 0,15	7,00	± 0,15
04	14,90	± 0,15	10,50	± 0,15
05	18,40	± 0,15	14,00	± 0,15
06	21,90	± 0,15	17,50	± 0,15
07	25,40	± 0,20	21,00	± 0,20
08	28,90	± 0,20	24,50	± 0,20
09	32,40	± 0,20	28,00	± 0,20
10	35,90	± 0,20	31,50	± 0,20
11	39,40	± 0,20	35,00	± 0,20
12	42,90	± 0,20	38,50	± 0,20
13	46,40	± 0,25	42,00	± 0,25
14	49,90	± 0,25	45,50	± 0,25
15	53,40	± 0,25	49,00	± 0,25
16	56,90	± 0,25	52,50	± 0,25
17	60,40	± 0,25	56,00	± 0,25
18	63,90	± 0,25	59,50	± 0,25
19	67,40	± 0,30	63,00	± 0,30
20	70,90	± 0,30	66,50	± 0,30
21	74,40	± 0,30	70,00	± 0,30
22	77,90	± 0,30	73,50	± 0,30
23	81,40	± 0,30	77,00	± 0,30
24	84,90	± 0,30	80,50	± 0,30

Pluggable Terminal Block (Header) w. Latch

Part No.: **A14G118**

Customer:

DRW:	Jason	CHKD	Wilson	MATL:	Wilson	TOLERANCE	Mason	DATE	15.03.2015
APPD:	Schumi			FINISH	Jamy		Sheet No.		2 from 4

EDCON-COMPONENTS



Ordering Informations

Serie	No. of Pos.	Body Color	No Function	Approval Code	ROHS	Packing	EDCON Cust. No.	Customer Version		
-------	-------------	------------	-------------	---------------	------	---------	-----------------	------------------	--	--

A14G118	02	PG	N	N	R	B				
----------------	-----------	-----------	----------	----------	----------	----------	--	--	--	--

Pitch 3,50	02 = Number of Pos. Standard 2 ~ 24 Pos.	PG = Phoenix Green (Standard) WH = White	N = No function	N = NON Approval A = UL /UR Approval Please consult EDCON for available	R = ROHS Conform N = NON ROHS Conform	B = Bulk-Ware I = Individual Package	xxxxxx = Customer Number	xxx = Customer Version ??(Printing)		
---------------	--	---	------------------------	--	--	---	---------------------------------	--	--	--

Other Position on Request Please consult EDCON	GN = Green GY = Gray LG = Light Gray OR = Orange BL = Blue BK = Black		B = VDE Approval Please consult EDCON for available C = TÜV Approval Please consult EDCON for available					
--	--	--	--	--	--	--	--	--

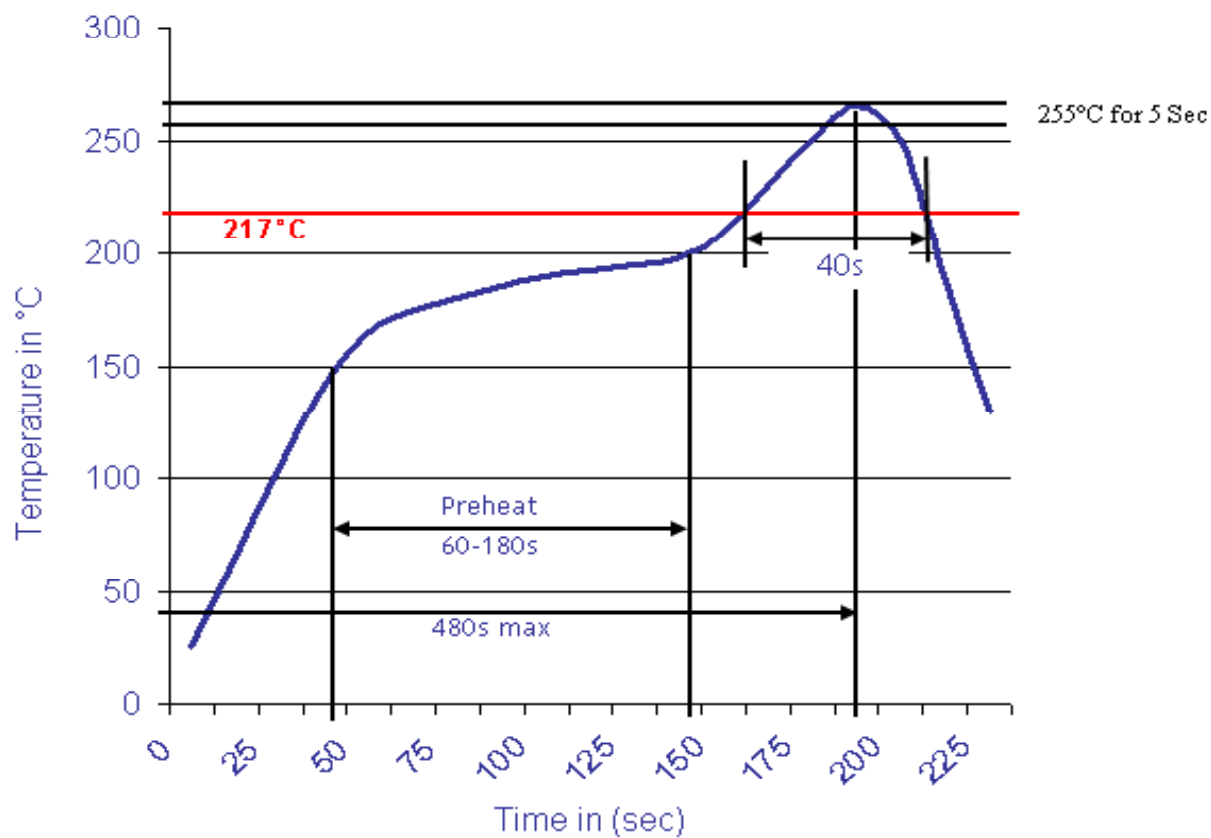
Pluggable Terminal Block (Header) w. Latch	
Part No.:	A14G118
Customer:	

DRW:	Jason	CHKD	Wilson	MATL:	Wilson	TOLERANCE	Mason	DATE	15.03.2015
APPD:	Schumi			FINISH	Jamy			Sheet No.	3 from 4



Soldering Profile Curve

Classification Reflow Profile (JEDEC J-STD-020C)



**Pluggable Terminal Block
(Header) w. Latch**

Part No.: **A14G118**

Customer:

DRW:	Jason	CHKD	Wilson	MATL:	Wilson	TOLERANCE	Mason	DATE	15.03.2015
APPD:	Schumi			FINISH	Jamy		Sheet No.	4 from 4	