

# Data Sheet

## Elevated Terminal Block R/A Closed Bottem

**Pitch: 7,62 mm**

**Serie: A13R002**

### Customer Information for special Item

**EDCON Customer : 0**

**Customer Version No. : 0**

# EDCON-COMPONENTS



## Technical Discription

## Drawing (Dimension in mm)

### Electrical

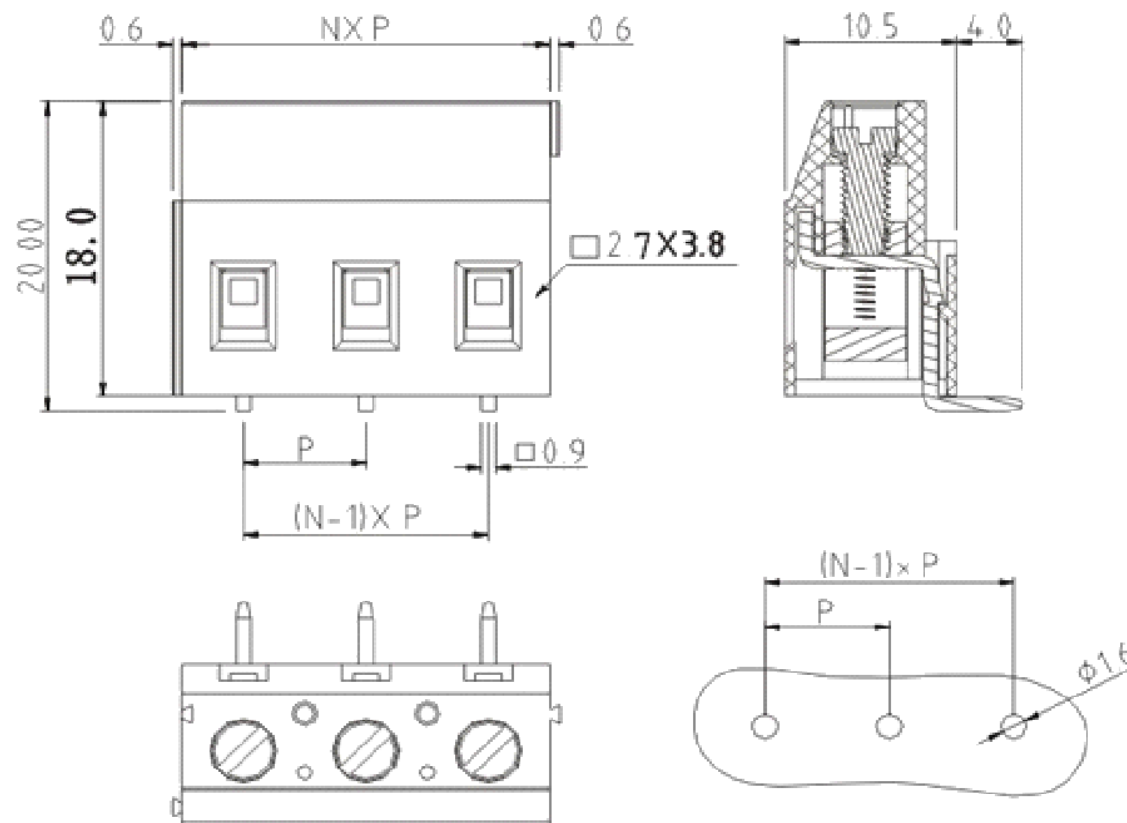
	UL	IEC
Rated Voltage	300V	450V
Rated Current	20A	20A
Wire Range	AWG 26~2	0,5~2,5mm <sup>2</sup>
Withstanding Voltage	AC 2500V/1Min.	
Torque	0,5Nm (4.4Lb-In.)	
Ambient Temperature	-40°C ~ +105°C	
Wire Strip Length	7mm	

### Dimensions

Pitch (mm)	7,62mm
Poles	2P, 3P ~ 24P

### Materials

Terminal Housing	PA66, UL94V-0
Screw	M3, Steel, Cr3+ Zn plated
Pin Header	Brass, Tin plated
Cage	Brass, Ni plated



### Elevated Terminal Block R/A Closed Bottom

Part No.: **A13R002**

Customer:

DRW:	Jason	CHKD	Wilson	MATL:	Wilson	TOLERANCE	Mason	DATE	27.10.2011
APPD:	Schumi			FINISH	Jamy		Sheet No.		1 from 3

[www.edcon-components.com](http://www.edcon-components.com)

email: [info@edcon-components.com](mailto:info@edcon-components.com)



# EDCON-COMPONENTS



## Ordering Informations

Serie	No. of Pos.	Body Color	Screw	Approval Code	ROHS	Packing	EDCON Cust. No.	Customer Version		
-------	-------------	------------	-------	---------------	------	---------	-----------------	------------------	--	--

<b>A13R002</b>	<b>02</b>	<b>PG</b>	<b>S</b>	<b>N</b>	<b>R</b>	<b>B</b>				
----------------	-----------	-----------	----------	----------	----------	----------	--	--	--	--

Pitch 7,62	<b>02</b> = Number of Pos. Standard 2 ~ 24Pos.	<b>PG</b> = Phoenix Green (Standard) <b>WH</b> = White <b>GN</b> = Green <b>GY</b> = Gray <b>LG</b> = Light Gray <b>OR</b> = Orange <b>BL</b> = Blue <b>BK</b> = Black	<b>S</b> = Slit Screw Type (Standard)  <b>C</b> = Cross Slit Screw Type (on request) 	<b>N</b> = NON Approval <b>A</b> = UL /UR Approval Please consult EDCON for available <b>B</b> = VDE Approval Please consult EDCON for available <b>C</b> = TÜV Approval Please consult EDCON for available	<b>R</b> = ROHS Conform <b>N</b> = NON ROHS Conform	<b>B</b> = Bulk-Ware <b>I</b> = Individual Package	<b>xxxxxx</b> = Customer Number	<b>xxx</b> = Customer Version ??(Printing)		
---------------	---	---	--	--	--	---	---------------------------------	--	--	--

**Elevated Terminal Block  
R/A Closed Bottem**  
Part No.: **A13R002**

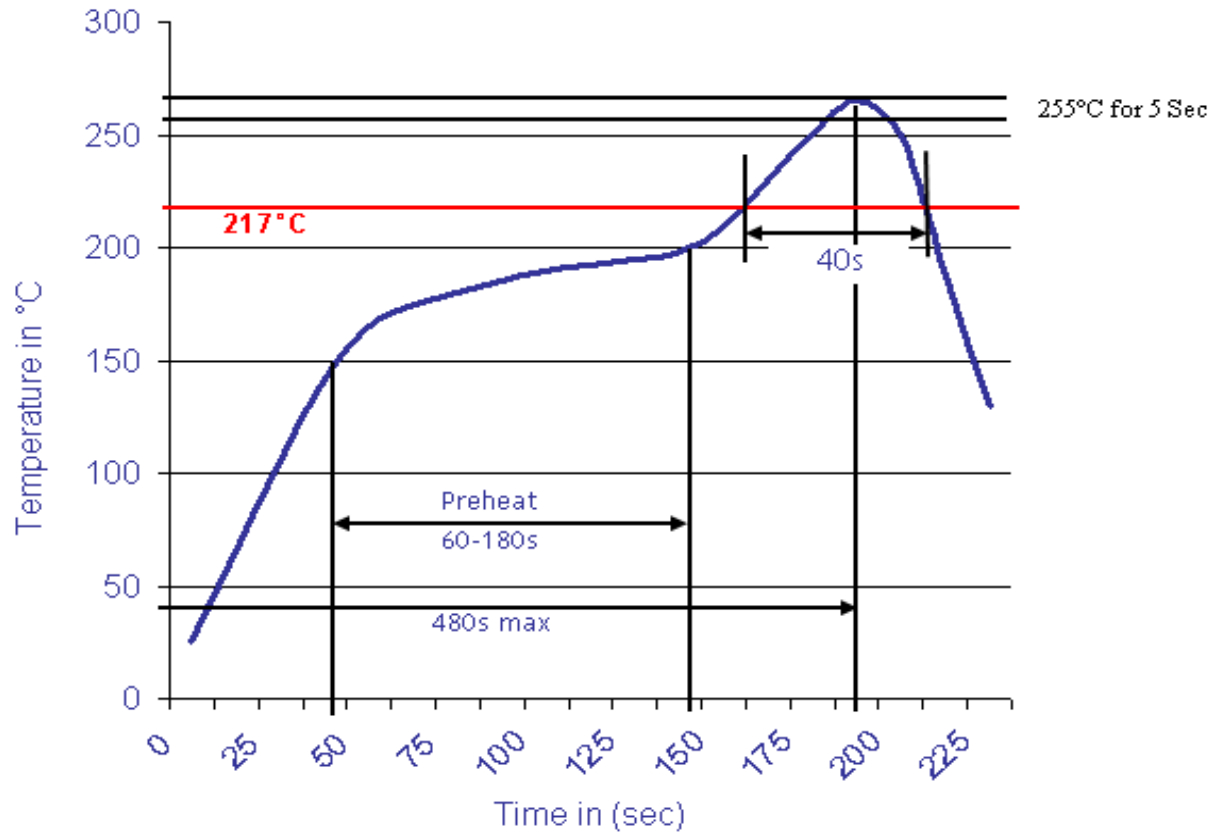
DRW:	Jason	CHKD	Wilson	MATL:	Wilson	TOLERANCE	Mason	DATE	27.10.2011
APPD:	Schumi			FINISH	Jamy			Sheet No.	2 from 3

Customer:



**Soldering Profile Curve**

**Classification Reflow Profile (JEDEC J-STD-020C)**



<b>Elevated Terminal Block R/A Closed Bottem</b>	
Part No.:	<b>A13R002</b>
Customer:	

DRW:	Jason	CHKD	Wilson	MATL:	Wilson	TOLERANCE	Mason	DATE	27.10.2011
APPD:	Schumi			FINISH	Jamy		Sheet No.	3 from 3	