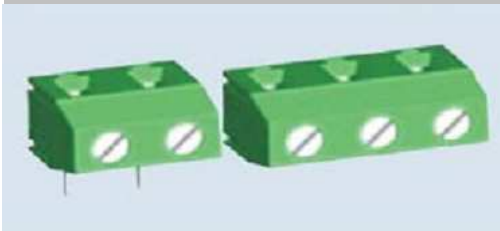


# EDCON-COMPONENTS



## Technical Discription

## Drawing (Dimension in mm)

### Electrical

Rated Voltage	300Volt
Rated Current	16A
Wire Range	1,0 ~ 2,5mm <sup>2</sup>
Contact Resistance	20m Ω
Withstanding Voltage	1,6KV
Insulation Resistance	5000MmΩ / 1000V

### Mechanical

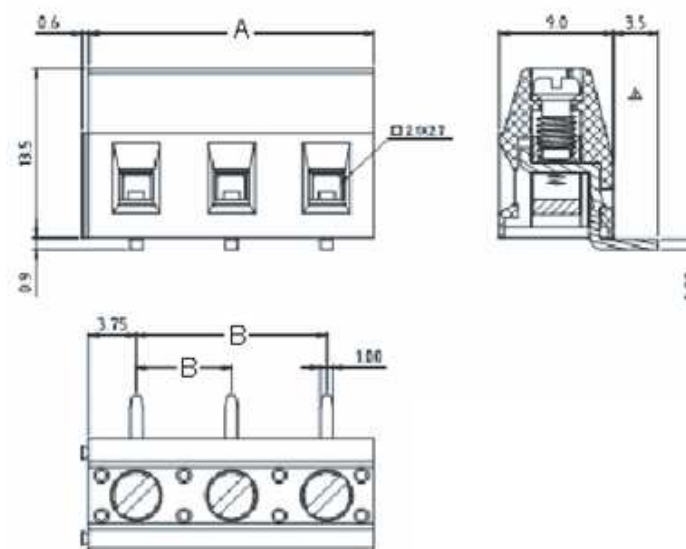
Operating Temperature	-40°C ~ +105°C
Wire Strip Length	6-7mm
Screw Torque	3,5
Screw Size	M2,5

### Dimensions

Pitch	7,50mm
Poles	2 + 3 Pos.

### Materials

Housing	PA66, UL94V-0
Pin Heder	Brass Tin Plated
Screw	Fe Ni-plated
Cage	Brass Ni Plated

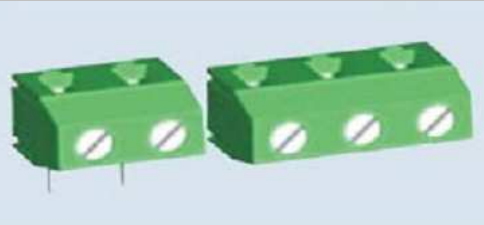


**Terminal Block Pitch  
7,50mm Elevated Type**

Part No.: **A13Q003**

DRW:	Jason	CHKD	Wilson	MATL:	Wilson	TOLERANCE	Mason	DATE	11.02.2011
APPD:	Schumi			FINISH	Jamy		Sheet No.	1 from 4	Customer:

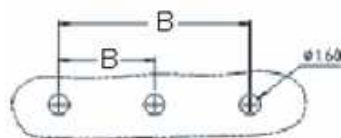
# EDCON-COMPONENTS



PCB Layout



Technical Dimension (mm)



No. of Pos.	A	Tol. A	B	Tol. B
2	22,50	± 0,15	15,00	± 0,15
3	30,00	± 0,15	22,50	± 0,15
4	37,50	± 0,15	30,00	± 0,15
5	45,00	± 0,15	37,50	± 0,15
6	52,50	± 0,15	45,00	± 0,15
7	60,00	± 0,25	52,50	± 0,25
8	67,50	± 0,25	60,00	± 0,25
9	75,00	± 0,25	67,50	± 0,25
10	82,50	± 0,25	75,00	± 0,25
11	90,00	± 0,25	82,50	± 0,25
12	97,50	± 0,25	90,00	± 0,25
13	105,00	± 0,35	97,50	± 0,35
14	112,50	± 0,35	105,00	± 0,35
15	120,00	± 0,35	112,50	± 0,35
16	127,50	± 0,35	120,00	± 0,35
17	135,00	± 0,35	127,50	± 0,35
18	142,50	± 0,35	135,00	± 0,35
19	150,00	± 0,35	142,50	± 0,35
20	157,50	± 0,40	150,00	± 0,40
21	165,00	± 0,40	157,50	± 0,40
22	172,50	± 0,40	165,00	± 0,40
23	180,00	± 0,40	172,50	± 0,40
24	187,50	± 0,40	180,00	± 0,40

**Terminal Block Pitch  
7,50mm Elevated Type**

Part No.: **A13Q003**

DRW:	Jason	CHKD	Wilson	MATL:	Wilson	TOLERANCE	Mason	DATE	11.02.2011
APPD:	Schumi			FINISH	Jamy		Sheet No.	2 from 4	Customer:

# EDCON-COMPONENTS



## Ordering Informations

Serie	No. of Pos.	Body Color	Screw Type	ROHS	Packing	EDCON Cust. No.	Customer Version			
<b>A13Q003</b>	<b>02</b>	<b>PG</b>	<b>A</b>	<b>R</b>	<b>BU</b>	<b>xxxxxx</b>	<b>xxx</b>			

Pitch  
7,50

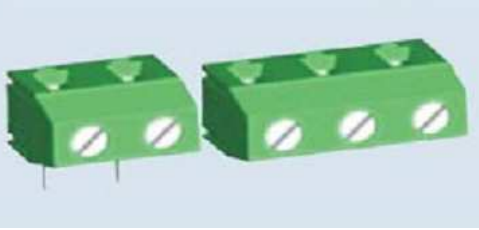
<b>02=</b> Number of Pos.	<b>PG=</b> Phoenix Green (Standard)	<b>A=</b> Slotted Screw Type (Standard)	<b>R=</b> ROHS Conform	<b>BU=</b> Bulk-Ware	<b>xxxxxx=</b> Customer Number	<b>xxx=</b> Customer Version ??(Printing)
Standard 2 +3 Pos.	<b>WH=</b> White	<b>B=</b> Cross Slotted Screw Type	<b>N=</b> NON ROHS Conform			
Other Position on Request	<b>GN=</b> Green					
	<b>GN=</b> Gray					
	<b>LG=</b> Light Gray	<b>Screw Type A</b>				
	<b>OR=</b> Orange	<b>Type B</b>				
	<b>BL=</b> Blue					
	<b>BK=</b> Black					

**Terminal Block Pitch  
7,50mm Elevated Type**

Part No.: **A13Q003**

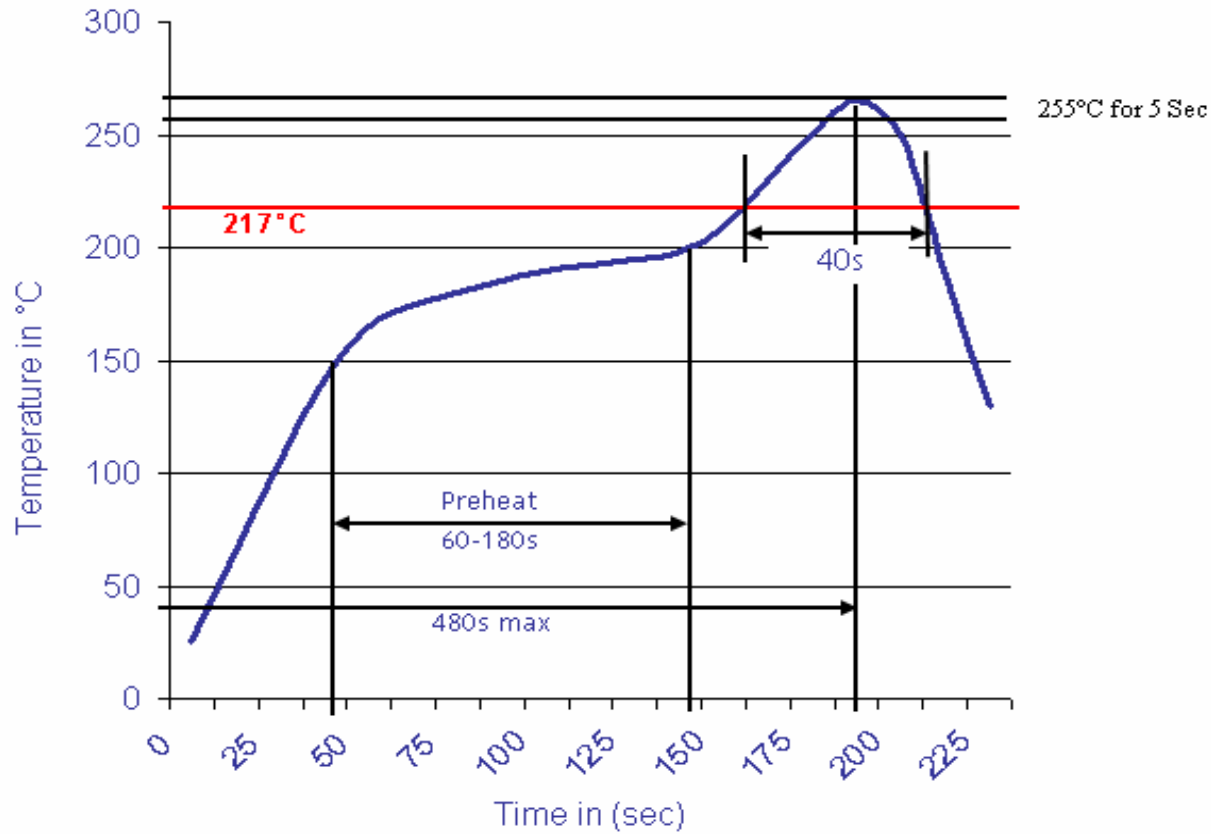
DRW:	Jason	CHKD	Wilson	MATL:	Wilson	TOLERANCE	Mason	DATE	11.02.2011
APPD:	Schumi			FINISH	Jamy		Sheet No.		3 from 4

Customer:



**Soldering Profile Curve**

**Classification Reflow Profile (JEDEC J-STD-020C)**



<b>Terminal Block Pitch 7,50mm Elevated Type</b>	
Part No.:	<b>A13Q003</b>
Customer:	

DRW:	Jason	CHKD	Wilson	MATL:	Wilson	TOLERANCE	Mason	DATE	11.02.2011
APPD:	Schumi			FINISH	Jamy		Sheet No.	4 from 4	