

Data Sheet

Elevated Terminal Block Pitch 3,81mm

Pitch: 3,81 mm

Serie: A13H001

Customer Information for special Item

EDCON Customer : xxxxxx

Customer Version No. : xx

EDCON-COMPONENTS



Technical Discription

Electrical:

Rated voltage:

300V

Rated current:

10A

Withstanding Voltage: AC/1min:

1600V

Operating Temperature:

-40°C ~ +115°C

Mechanical:

Strip length: mm

5 ~ 6

Wire range: Solid wire: AWG

16-30

Wire range: Stranded wire:AWG

16-30

Material:

Housing Terminal Body:

Thermoplastik UL94V-0

Material Screw:

Stainless steel

Material Terminal:

Copper Matte Tin plated over Nickel

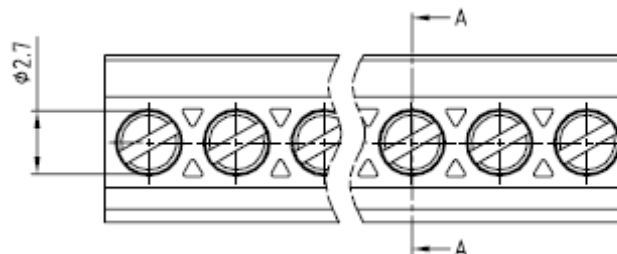
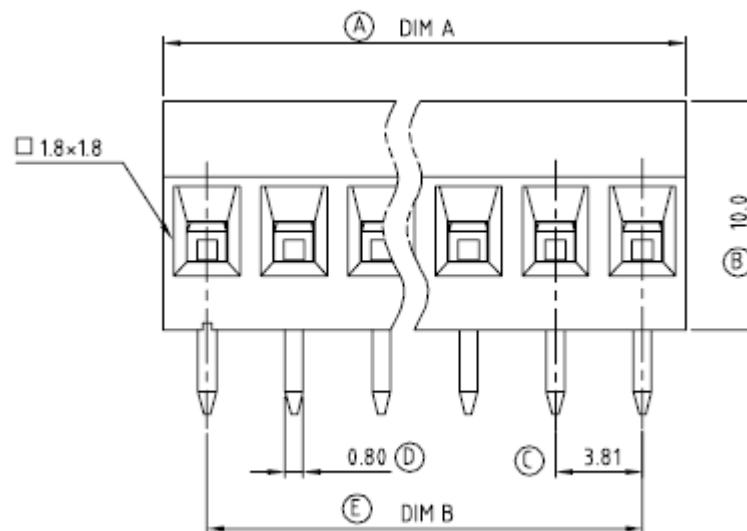
Clamp:

Brass Ni Plated

Wire Guard Solder Pin

Brass Tin Plated

Drawing (Dimension in mm)



Item No.		
1		
2		
3		
4		
5		
6		
7		
8		
9		

Tolerances unless otherwise specified (mm)				
x	x.x	x.xx	x.xxx	Angle
±0,50	±0,30	±0,1	±	±3°
DRW:	Jason	CHKD	Wilson	MATL:
APPD:	Schumi			FINISH

Elevated Terminal Block Pitch 3,81mm	
Part No.:	A13H001
Customer:	

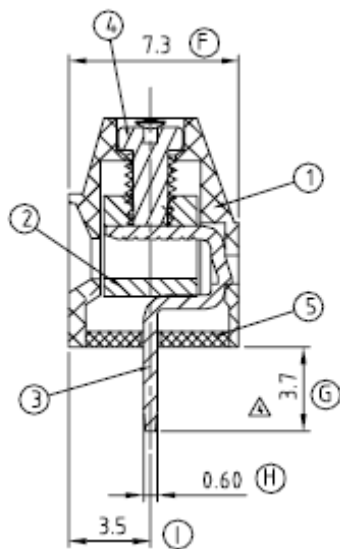
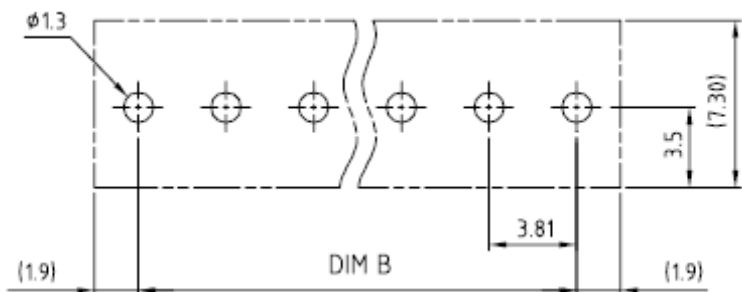
DRW:	Jason	CHKD	Wilson	MATL:	Wilson	TOLERANCE	Mason	DATE	24.03.2018
APPD:	Schumi			FINISH	Jamy		Sheet No.		1 from 4

EDCON-COMPONENTS



PCB Layout Dimension (mm)

TOP-VIEW



Dimensions (mm)

A	Tol. P	B	Tol. P	No. of Pos.
7,62	$\pm 0,35$	3,81	$\pm 0,35$	02
11,43	$\pm 0,35$	7,62	$\pm 0,35$	03
15,24	$\pm 0,35$	11,43	$\pm 0,35$	04
19,05	$\pm 0,35$	15,24	$\pm 0,35$	05
22,86	$\pm 0,35$	19,05	$\pm 0,35$	06
26,67	$\pm 0,35$	22,86	$\pm 0,35$	07
30,48	$\pm 0,35$	26,67	$\pm 0,35$	08
34,29	$\pm 0,35$	30,48	$\pm 0,35$	09
38,10	$\pm 0,35$	34,29	$\pm 0,35$	10
41,91	$\pm 0,35$	38,10	$\pm 0,35$	11
45,72	$\pm 0,35$	41,91	$\pm 0,35$	12
49,53	$\pm 0,35$	45,72	$\pm 0,35$	13
53,34	$\pm 0,35$	49,53	$\pm 0,35$	14
57,15	$\pm 0,35$	53,34	$\pm 0,35$	15
60,96	$\pm 0,35$	57,15	$\pm 0,35$	16
64,77	$\pm 0,35$	60,96	$\pm 0,35$	17
68,58	$\pm 0,35$	64,77	$\pm 0,35$	18
72,39	$\pm 0,35$	68,58	$\pm 0,35$	19
76,20	$\pm 0,35$	72,39	$\pm 0,35$	20
80,01	$\pm 0,35$	76,20	$\pm 0,35$	21
83,82	$\pm 0,35$	80,01	$\pm 0,35$	22
87,63	$\pm 0,35$	83,82	$\pm 0,35$	23
91,44	$\pm 0,35$	87,63	$\pm 0,35$	24

**Elevated Terminal Block Pitch
3,81mm**

Part No.: **A13H001**

Customer:

DRW:	Jason	CHKD	Wilson	MATL:	Wilson	TOLERANCE	Mason	DATE	24.03.2018
APPD:	Schumi			FINISH	Jamy		Sheet No.		2 from 4

EDCON-COMPONENTS



Ordering Informations

Serie	No. of Pos.	Body Color	Srew Type	Approval Code	ROHS	Packing	EDCON Cust. No.	Customer Version		
A13H001	02	PG	A	N	R	B	xxxxxx	xx		

Pitch
3,81

02= Number of Pos.	PG= Phoenix Green (Standard)		N= NON Approval	R= ROHS Conform	B= Standard Package Box/ Polybag	xxxxxx= Customer Number	xx= Customer Version (Printing) ??
Standard 2 ~ 24Pos.		A= Screw- Type SLIT	1= UL-Approval for Body Material	N= NON ROHS Conform	I= Individual Package		
		B= Screw- Type CROSS-SLIT	A= UL /UR Approval Please consult EDCON for available				
			B= VDE Approval Please consult EDCON for available				
			C= TÜV Approval Please consult EDCON for available				

**Elevated Terminal Block Pitch
3,81mm**

Part No.: **A13H001**

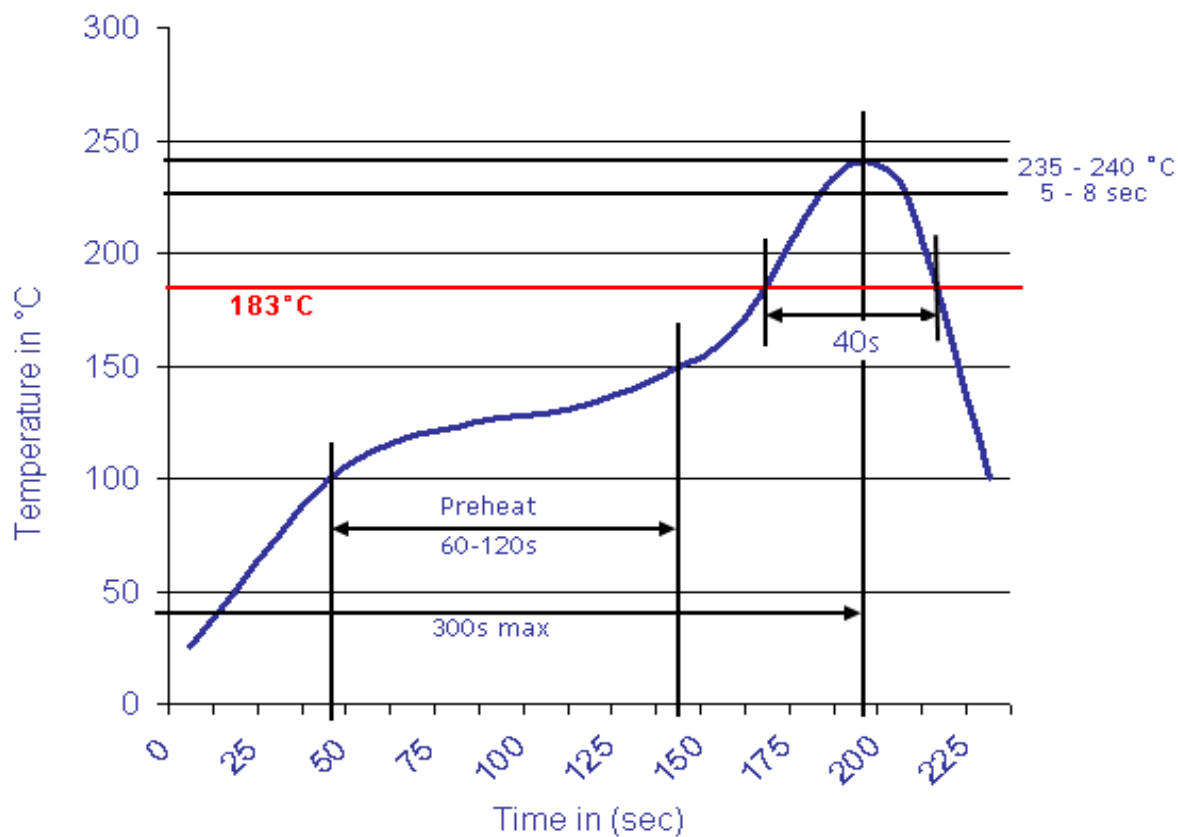
Customer:

DRW:	Jason	CHKD	Wilson	MATL:	Wilson	TOLERANCE	Mason	DATE	24.03.2018
APPD:	Schumi			FINISH	Jamy		Sheet No.		3 from 4



Soldering Profile Curve

Classification Reflow Profile (JEDEC J-STD-020C)



Elevated Terminal Block Pitch
3,81mm

Part No.: **A13H001**

DRW:	Jason	CHKD	Wilson	MATL:	Wilson	TOLERANCE	Mason	DATE	24.03.2018
APPD:	Schumi			FINISH	Jamy		Sheet No.	4 from 4	

Customer:

