

# Data Sheet

## Elevated Terminal Block

**Pitch: 3,50 mm**

**Serie: A13G004**

### Customer Information for special Item

**EDCON Customer : 0**

**Customer Version No. : 0**

# EDCON-COMPONENTS



## Technical Discription

## Drawing (Dimension in mm)

### Electrical

Rated Voltage	130 Volt
Rated Current	10A
Wire Range	
Solid Wire	AWG 16~26
Stranged Wire	AWG 16~26
Withstanding Voltage	1,25KV
Insulation Resistance	5000MΩ / 1000V

### Mechanical

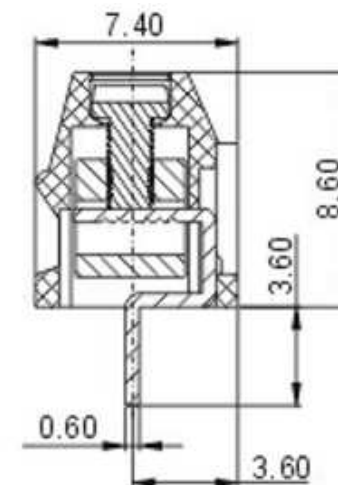
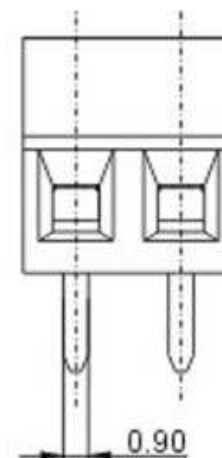
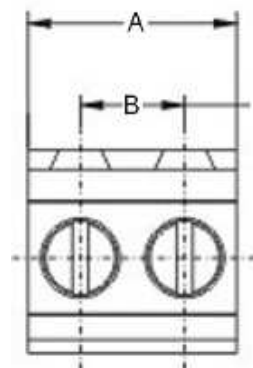
Operating Temperature	-40°C ~ +115°C
Wire Strip Length	5mm

### Dimensions

Pitch (mm)	3,50
Poles	2 + 3Pos. ~ 24 Pos.

### Materials

1 Terminal Housing	Thermoplastic ( UL94V-0)
2 Clamp	Brass Ni, plated
3 Wire guard	Wire guard solder Pin
4 Terminal screw	Steel Zinc plating
5 Terminal Housing Cover	Thermoplastic ( UL94V-0)



### Elevated Terminal Block

Part No.: **A13G004**

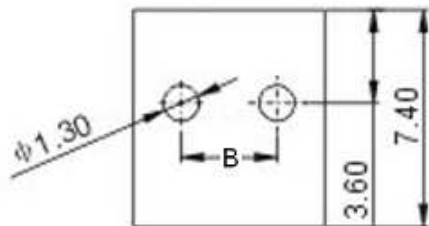
Customer:

DRW:	Jason	CHKD	Wilson	MATL:	Wilson	TOLERANCE	Mason	DATE	12.01.2011
APPD:	Schumi			FINISH	Jamy		Sheet No.		1 from 4

# EDCON-COMPONENTS



## Dimensions (mm)



### Customer Special Information (Picture, Drawing )

No. of Pos.	A	Tol. A	B	Tol. B
02	7,00	± 0,15	3,50	± 0,15
03	10,50	± 0,15	7,00	± 0,15
04	14,00	± 0,15	10,50	± 0,15
05	17,50	± 0,15	14,00	± 0,15
06	21,00	± 0,15	17,50	± 0,15
07	24,50	± 0,25	21,00	± 0,25
08	28,00	± 0,25	24,50	± 0,25
09	31,50	± 0,25	28,00	± 0,25
10	35,00	± 0,25	31,50	± 0,25
11	38,50	± 0,25	35,00	± 0,25
12	42,00	± 0,25	38,50	± 0,25
13	45,50	± 0,35	42,00	± 0,35
14	49,00	± 0,35	45,50	± 0,35
15	52,50	± 0,35	49,00	± 0,35
16	56,00	± 0,35	52,50	± 0,35
17	59,50	± 0,35	56,00	± 0,35
18	63,00	± 0,35	59,50	± 0,35
19	66,50	± 0,35	63,00	± 0,35
20	70,00	± 0,40	66,50	± 0,40
21	73,50	± 0,40	70,00	± 0,40
22	77,00	± 0,40	73,50	± 0,40
23	80,50	± 0,40	77,00	± 0,40
24	84,00	± 0,40	80,50	± 0,40

### Elevated Terminal Block

Part No.: **A13G004**

Customer:

DRW:	Jason	CHKD	Wilson	MATL:	Wilson	TOLERANCE	Mason	DATE	12.01.2011
APPD:	Schumi			FINISH	Jamy		Sheet No.		2 from 4



# EDCON-COMPONENTS



## Ordering Informations

Serie	No. of Pos.	Body Color	No Function	Approval Code	ROHS	Packing	EDCON Cust. No.	Customer Version		
-------	-------------	------------	-------------	---------------	------	---------	-----------------	------------------	--	--

<b>A13G004</b>	<b>02</b>	<b>PG</b>	<b>A</b>	<b>N</b>	<b>R</b>	<b>B</b>				
----------------	-----------	-----------	----------	----------	----------	----------	--	--	--	--

Pitch 3,50	<b>02</b> = Number of Pos. Standard 2 + 3Pos- ~ 24Pos.	<b>PG</b> = Phoenix Green (Standard) <b>WH</b> = White <b>GN</b> = Green <b>GY</b> = Gray <b>LG</b> = Light Gray <b>OR</b> = Orange <b>BL</b> = Blue <b>BK</b> = Black	<b>A</b> = Slotted Screw Type (Standard)  <b>B</b> = Cross Slotted Screw Type 	<b>N</b> = NON Approval <b>A</b> = UL /UR Approval Please consult EDCON for available <b>B</b> = VDE Approval Please consult EDCON for available <b>C</b> = TÜV Approval Please consult EDCON for available	<b>R</b> = ROHS Conform <b>N</b> = NON ROHS Conform	<b>B</b> = Bulk-Ware <b>I</b> = Individual Package	<b>xxxxxx</b> = Customer Number	<b>xxx</b> = Customer Version ??(Printing)		
---------------	---	---	---	--	--	---	---------------------------------	--	--	--

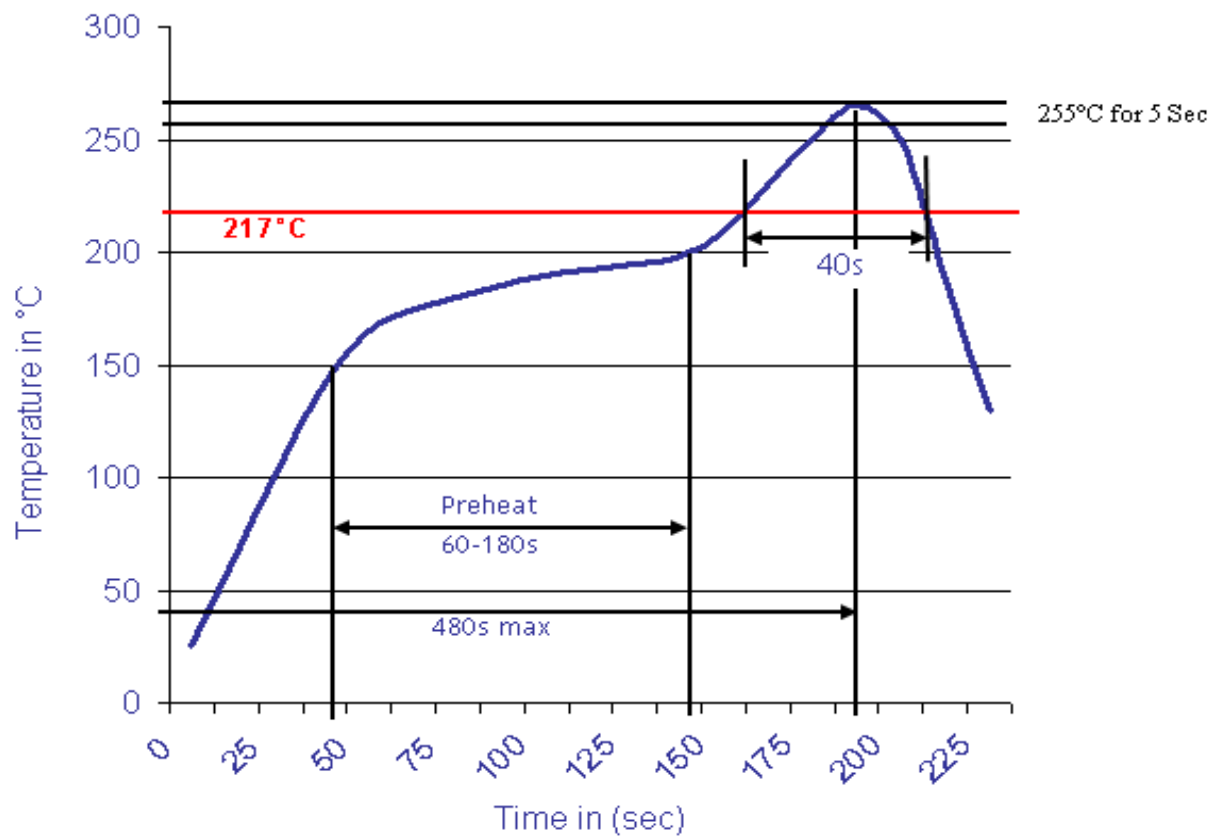
Elevated Terminal Block	
Part No.:	<b>A13G004</b>
Customer:	

DRW:	Jason	CHKD	Wilson	MATL:	Wilson	TOLERANCE	Mason	DATE	12.01.2011
APPD:	Schumi			FINISH	Jamy		Sheet No.		3 from 4



Soldering Profile Curve

Classification Reflow Profile (JEDEC J-STD-020C)



<b>Elevated Terminal Block</b>	
Part No.:	<b>A13G004</b>
Customer:	

DRW:	Jason	CHKD	Wilson	MATL:	Wilson	TOLERANCE	Mason	DATE	12.01.2011
APPD:	Schumi			FINISH	Jamy		Sheet No.	4 from 4	