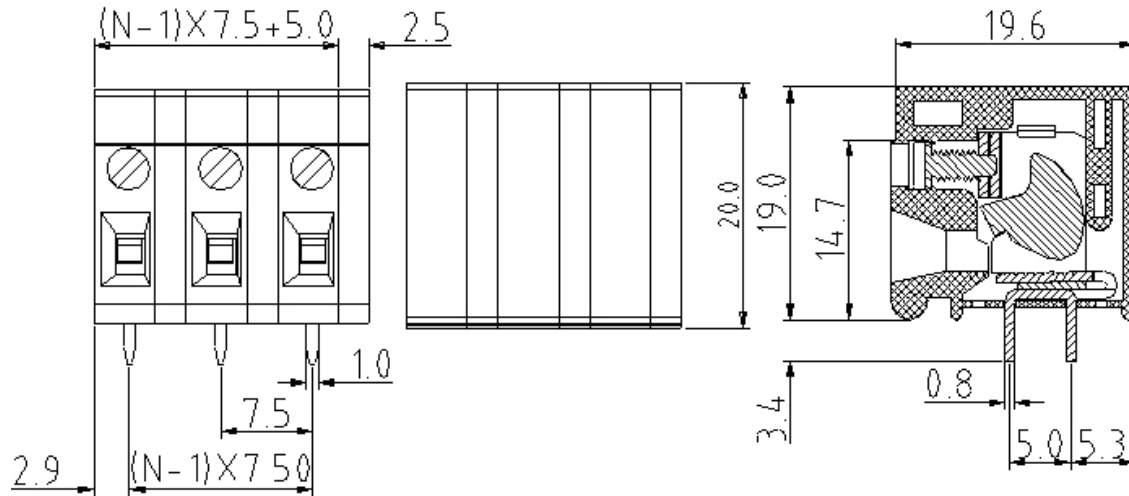


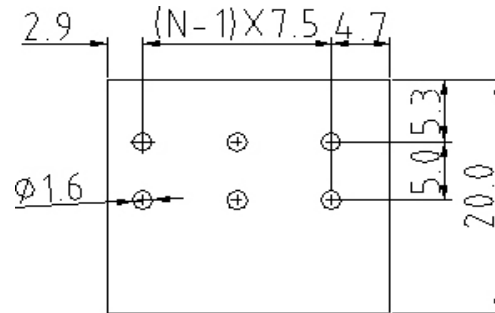
EDCON-COMPONENTS



Drawing



P.C.B. Layout



Specification

APPROVAL



Electrical

Standard	cULus
Rated voltage	300V
Rated current	20A
Wire range	22-12 AWG
Withstanding voltage	1.6KV

Mechanical

Ambient temperature	-40°C ~ +115°C
Soldering temperature	250°C ± 10°C/5 sec
Strip length	10 ~ 11mm
Screw, Torque	M2.5, 0.25Nm (2.4Lb-In.)

Dimensions

Pitch	7.50mm
Poles	2P - 16P

Material

Housing	Thermoplastic (UL94V-0)
Surface of solder tail	Tin plated
Contact	Brass
Terminal screw	Steel Zinc plated
Metal housing	Steel stamped



Wire Protector Terminal Block /
Pitch 7.50mm

Part No.: A12Q009

Customer:

DRW:	Bill	CHKD	Lord	MATL:	Jimmy	TOLERANCE	Sam	DATE	14.03.2009
APPD:	Louis			FINISH	Georg			Sheet No.	1 from 3

www.edcon-components.com

email: info@edcon-components.com

EDCON-COMPONENTS



Ordering Informations

Serie	-	No. of Pole	Body-Color	wire protector	Screw	-	Customer Request
A12Q009	-	XX	XX	X	X	-	X

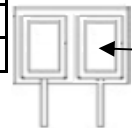
XX = total	WH - white	1 - with wire protector	A - Slotted screw (standard)
02	GN - green	2 - without wire protector	B - Cross-slotted screw
...	GR - gray (standard)		
16			



PG - Phoenix Green
OR - orange (standard)
BK - black
BL - blue
LG - light gray



wire protector



without wire protector



Certification



Wire Protector Terminal Block /
Pitch 7.50mm

Part No.: A12Q009

Customer:

DRW:	Bill	CHKD	Lord	MATL:	Jimmy	TOLERANCE	Sam	DATE	14.03.2009
APPD:	Louis			FINISH	Georg		Sheet No.		2 from 3

www.edcon-components.com

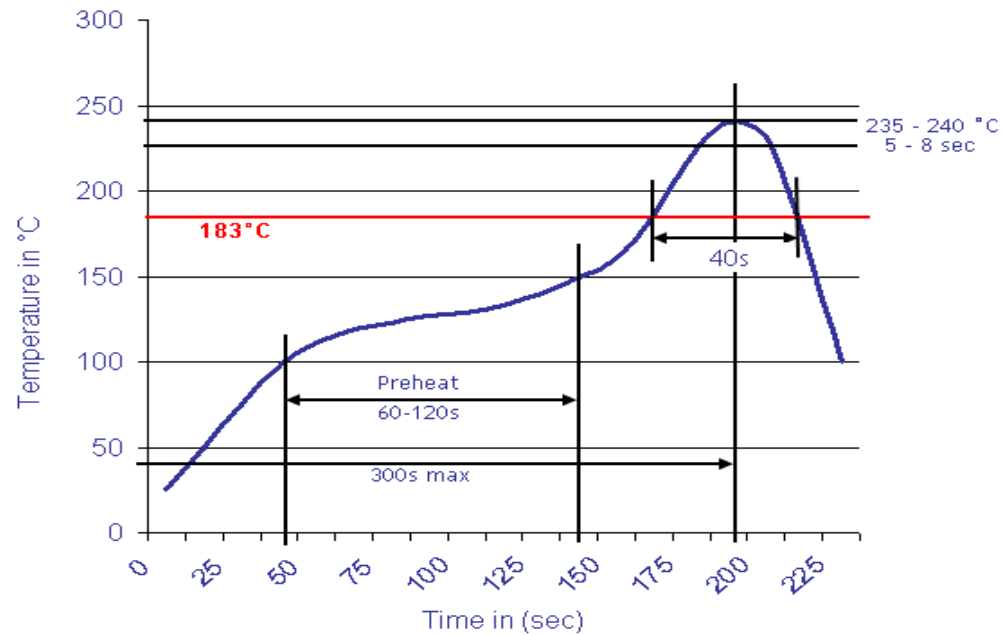
email: info@edcon-components.com

EDCON-COMPONENTS



Soldering - Profil

Classification Reflow Profile (JEDEC J-STD-020C)



Wire Protector Terminal Block /
Pitch 7.50mm

Part No.: A12Q009

Customer:

DRW:	Bill	CHKD	Lord	MATL:	Jimmy	TOLERANCE	Sam	DATE	14.03.2009
APPD:	Louis			FINISH	Georg		Sheet No.	3 from 3	

www.edcon-components.com

email: info@edcon-components.com