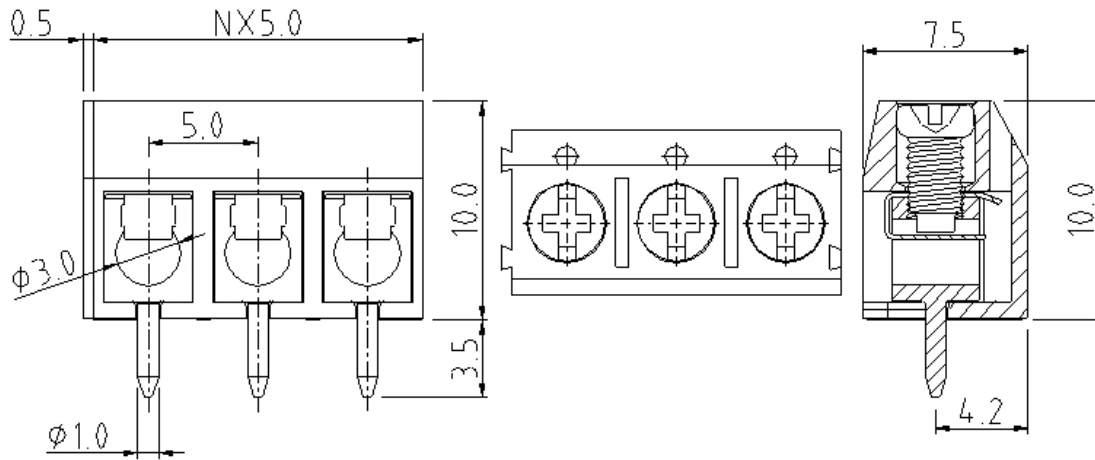


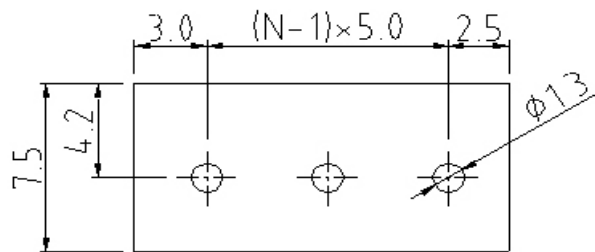
EDCON-COMPONENTS



Drawing



P.C.B. Layout



Specification

APPROVAL	ULus	VDE
Electrical		
Standard	UL	VDE
Rated voltage	300V	250V
Rated current	15A	17.5A
Wire range	22-14 AWG	0.75-1.5mm ²
Withstanding voltage	1.6KV	2KV
Mechanical		
Ambient temperature	-40°C ~ +115°C	
Soldering temperature	250°C ± 10°C/5sec	
Strip length	5 ~ 6mm	
Screw, Torque	M2.6, 0.4Nm (2.6Lb-In)	
Dimensions		
Pitch	5.00mm	
Poles	2P - 24P	
Material		
Housing	Thermoplastic (UL94V-0)	
Surface of solder tail	Tin plated	
Wire guard	Stainless steel	
Terminal screw	Steel Zinc plated	
Metal housing	Brass (CuZn)	



Wire Protector Terminal Block /
Pitch 5.00mm

Part No.: A12L040

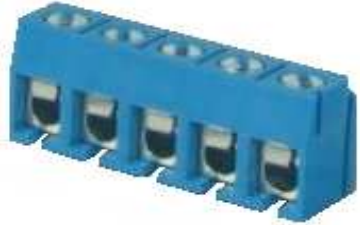
Customer:

DRW:	Bill	CHKD	Lord	MATL:	Jimmy	TOLERANCE	Sam	DATE	14.03.2009
APPD:	Louis			FINISH	Georg			Sheet No.	1 from 3

www.edcon-components.com

email: info@edcon-components.com

EDCON-COMPONENTS

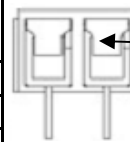


Ordering Informations

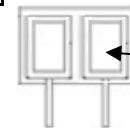
Serie	-	No. of Pole	Body-Color	wire protector	Screw	-	Customer Request
A12L040	-	XX	XX	X	X	-	X

XX = total	WH - white	1 - with wire protector	A - Slotted screw
02	GN - green	2 - without wire protector	B - Cross-slotted screw (standard)
...	GR - gray		
24	LG - light gray		

PG - Phoenix Green
OR - orange
BL - blue
BK - black



wire protector



without wire protector



Certification



Wire Protector Terminal Block /
Pitch 5.00mm

Part No.: A12L040

Customer:

DRW:	Bill	CHKD	Lord	MATL:	Jimmy	TOLERANCE	Sam	DATE	14.03.2009
APPD:	Louis			FINISH	Georg			Sheet No.	2 from 3

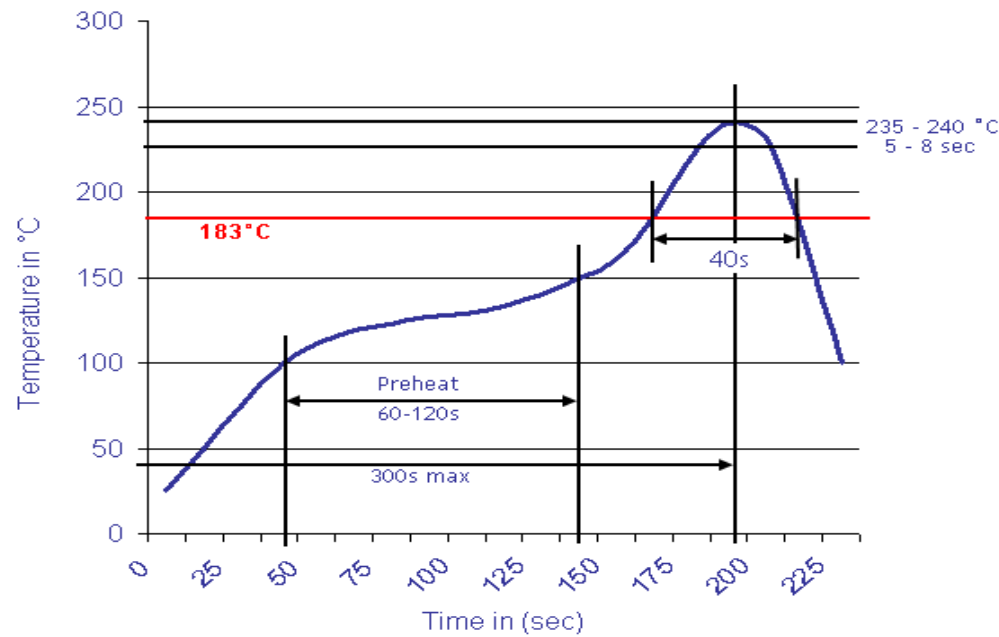
www.edcon-components.com

email: info@edcon-components.com



Soldering - Profil

Classification Reflow Profile (JEDEC J-STD-020C)



Wire Protector Terminal Block /
Pitch 5.00mm

Part No.: A12L040

Customer:

DRW:	Bill	CHKD	Lord	MATL:	Jimmy	TOLERANCE	Sam	DATE	14.03.2009
APPD:	Louis			FINISH	Georg		Sheet No.	3 from 3	