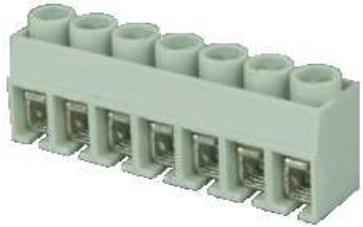
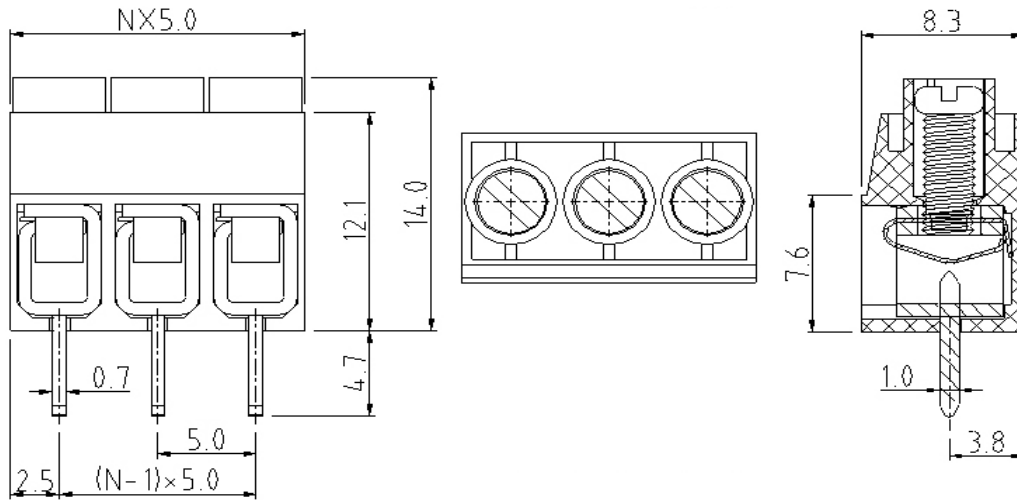


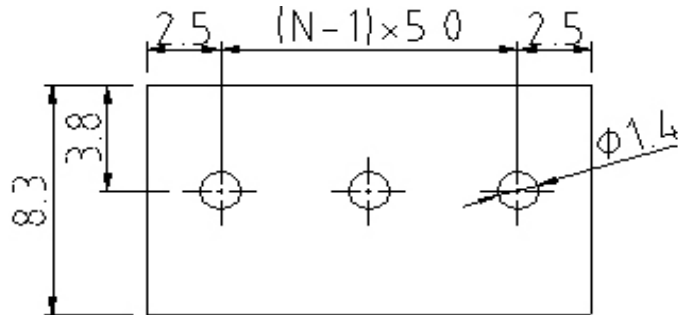
EDCON-COMPONENTS



Drawing



P.C.B. Layout



Specification

APPROVAL	UL	cUL
Electrical		
Standard	UL	cUL
Rated voltage	300C	250V
Rated current	10A	15A
Wire range	22-12 AWG	20-12 AWG
Withstanding voltage	1.6KV	1.5KV
Mechanical		
Ambient temperature	-40°C ~ +115°C	
Soldering temperature	250°C ± 10°C/5sec	
Strip length	6 ~ 7mm	
Screw, Torque	M2.5, 0.4Nm (3.5Lb-In)	
Dimensions		
Pitch	5.00mm	
Poles	2P - 24P	
Material		
Housing	Thermoplastic (UL94V-0)	
Surface of solder tail	Tin plated	
Contact	Stainless steel	
Terminal screw	Steel Zinc plated	
Metal housing	Brass Stamped	



Wire Protector Terminal Block /
Pitch 5.00mm

Part No.: A12L024

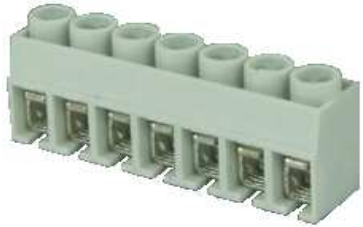
Customer:

DRW:	Bill	CHKD	Lord	MATL:	Jimmy	TOLERANCE	Sam	DATE	14.03.2009
APPD:	Louis			FINISH	Georg			Sheet No.	1 from 3

www.edcon-components.com

email: info@edcon-components.com

EDCON-COMPONENTS



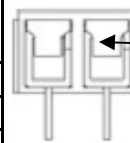
Ordering Informations

Serie	-	No. of Pole	Body-Color	wire protector	Screw	-	Customer Request
A12L024	-	XX	XX	X	X	-	X

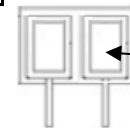
XX = total	WH - white	1 - with wire protector	A - Slotted screw <i>(standard)</i>
02	GN - green	2 - without wire protector	B - Cross-slotted screw
...	GR - gray		
24	LG - light gray		



PG - Phoenix Green
OR - orange
BL - blue
BK - black



wire protector



without wire protector



Certification



Wire Protector Terminal Block /
Pitch 5.00mm

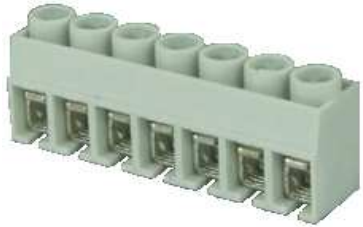
Part No.: A12L024

Customer:

DRW:	Bill	CHKD	Lord	MATL:	Jimmy	TOLERANCE	Sam	DATE	14.03.2009
APPD:	Louis			FINISH	Georg		Sheet No.		2 from 3

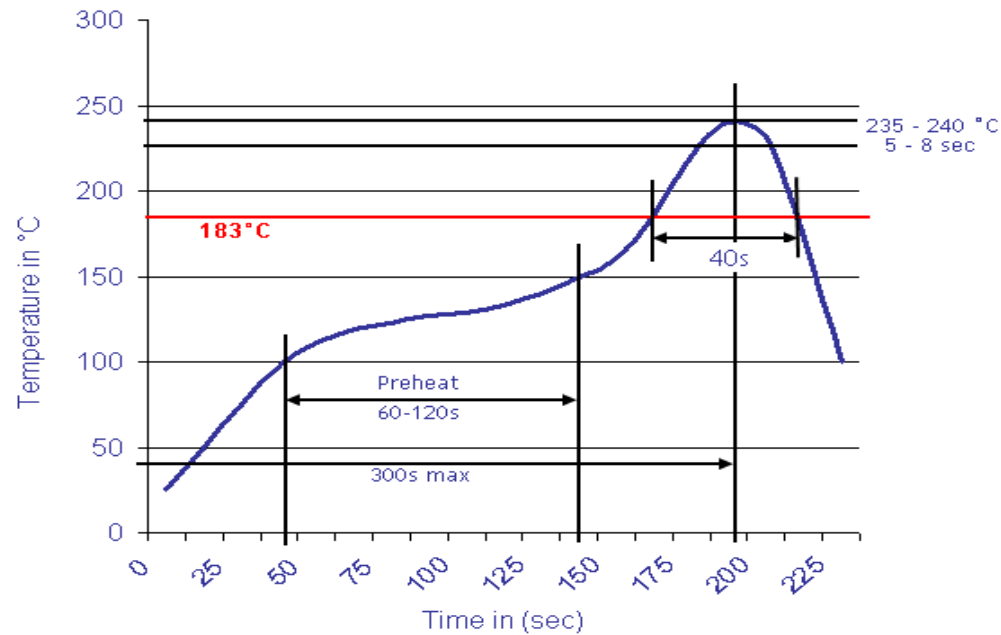
www.edcon-components.com

email: info@edcon-components.com



Soldering - Profil

Classification Reflow Profile (JEDEC J-STD-020C)



Wire Protector Terminal Block /
Pitch 5.00mm

Part No.: A12L024

DRW:	Bill	CHKD	Lord	MATL:	Jimmy	TOLERANCE	Sam	DATE	14.03.2009
APPD:	Louis			FINISH	Georg		Sheet No.	3 from 3	

Customer: