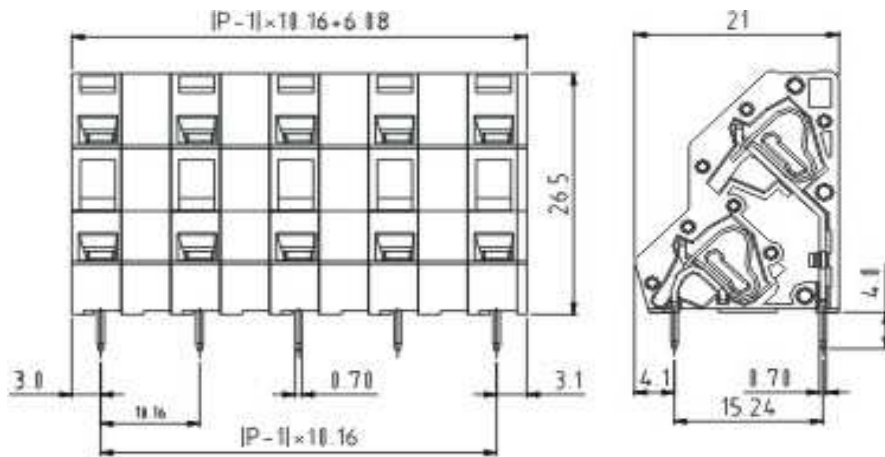
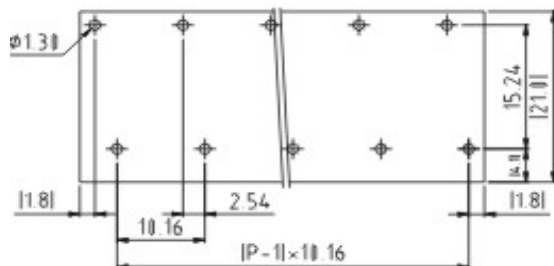


Drawing



P.C.B. Layout



Specifications

APPROVAL

Electrical

Standard
Rated voltage
Rated current
Withstanding voltage
Solid / Stranded wire



cULus
300V
10A
1.6KV
28-12 AWG

Mechanical

Wire strip length
Ambient temperature
Soldering temperature

5 ~ 6mm
-40°C ~ +115°C
250°C ±10°C/5 sec

Dimensions

Pitch
Poles

10.16mm
2x (2P - 12P)

Material

Housing
Pin header
Wire guard

Thermoplastic (UL94V-0)
Brass, Tin plated
Stainless steel



Certification



Screwless Terminal Block /

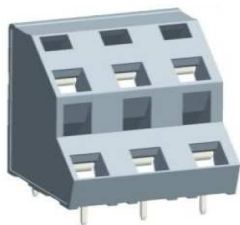
Pitch 10.16mm

Part No.: **A11U013**

DRW:	Jason	CHKD	Wilson	MATL:	Wilson	TOLERANCE	Mason	DATE	14.07.2009
APPD:	Schumi			FINISH	Jamy			Sheet No.	1 from 3

Customer:

email: info@edcon-components.com



Ordering Informations

Serie	-	No. of Pole	Body-Color	-	Customer Request
A11U013	-	XX	XX	-	X

XX = total	WH - white
02	GN - green
...	GR - gray
12	PG - Phoenix Green
	OR - orange
	BK - black
	BL - blue
	LG - light gray



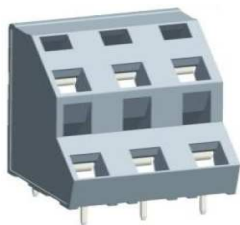
Certification



Screwless Terminal Block /
Pitch 10.16mm

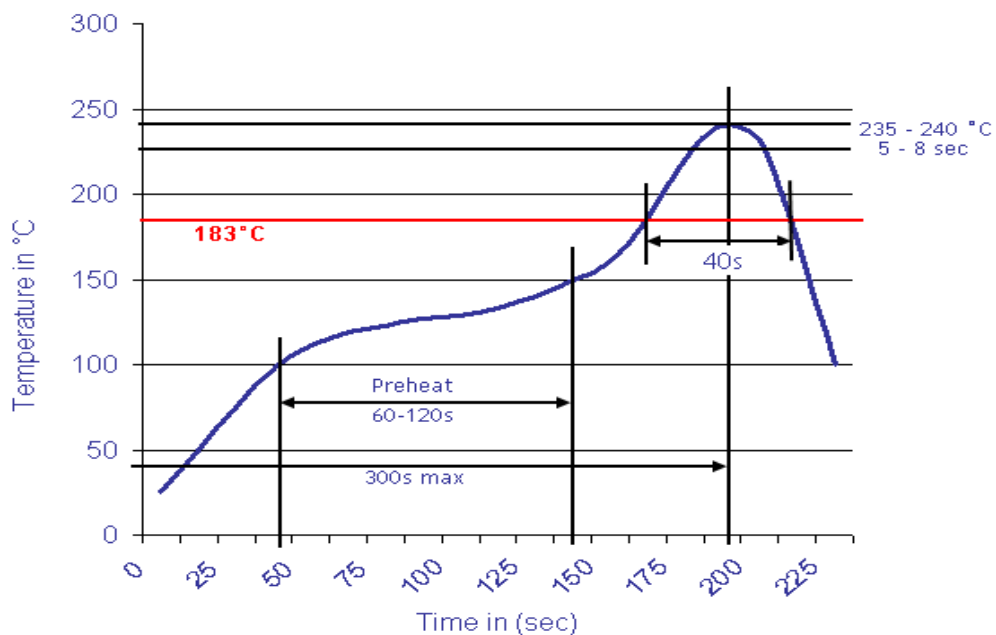
Part No.: **A11U013**

DRW:	Jason	CHKD	Wilson	MATL:	Wilson	TOLERANCE	Mason	DATE	14.07.2009	Customer:
APPD:	Schumi			FINISH	Jamy		Sheet No.	2 from 3		



Soldering - Profil

Classification Reflow Profile (JEDEC J-STD-020C)



Screwless Terminal Block /

Pitch 10.16mm

Part No.: **A11U013**

DRW:	Jason	CHKD	Wilson	MATL:	Wilson	TOLERANCE	Mason	DATE	14.07.2009
APPD:	Schumi			FINISH	Jamy		Sheet No.	3 from 3	Customer: