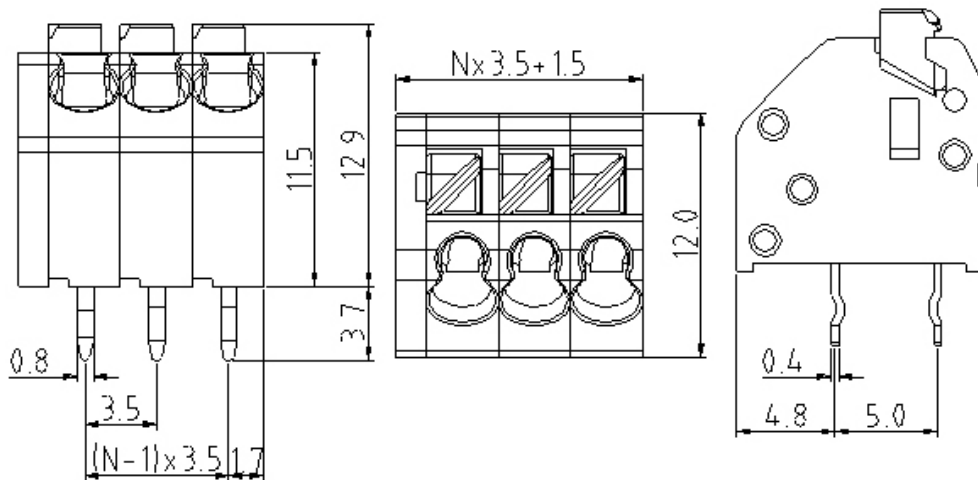


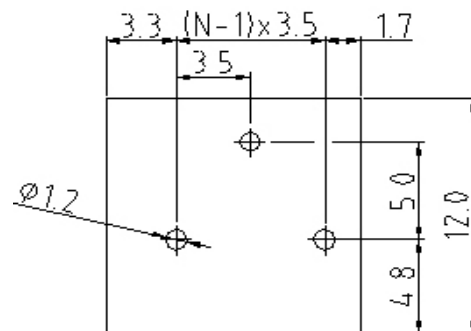
EDCON-COMPONENTS



Drawing



P.C.B. Layout



Specifications

APPROVAL



Electrical

Standard	UL	IEC
Rated voltage	300V	130V
Rated current	6A	6A
Wire range	16-20 AWG	0.5~0.75 mm ²
Solid wire	16-20 AWG	16-20 AWG
With standing voltage	1.6KV	1.25KV

Mechanical

Operating temperature	-40°C ~ +115°C
Soldering temperature	50°C ±10°C/5sec
Strip length	6 ~ 7mm

Dimensions

Pitch	3.50mm
Poles	2P - 24P

Material

Housing	Thermoplasti (UL94V-0)
Pin header	Brass, Tin plated
Wire guard	Stainless steel



Certification



Screwless Terminal Block /

Pitch 3.50mm

Part No.: **A11G002**

DRW:	Jason	CHKD	Wilson	MATL:	Wilson	TOLERANCE	Mason	DATE	14.07.2009
APPD:	Schumi			FINISH	Jamy			Sheet No.	1 from 3

Customer:

email: info@edcon-components.com

www.edcon-components.com



Ordering Informations

Serie	-	No. of Pole	Body-Color	-	Customer Request
A11G002	-	XX	XX	-	X

XX = total	WH - white
02	GN - green
...	GR - gray
24	(standard)
	PG - Phoenix Green
	OR - orange (standard)
	BK - black
	BL - blue
	LG - light gray



Certification



Screwless Terminal Block /
Pitch 3.50mm

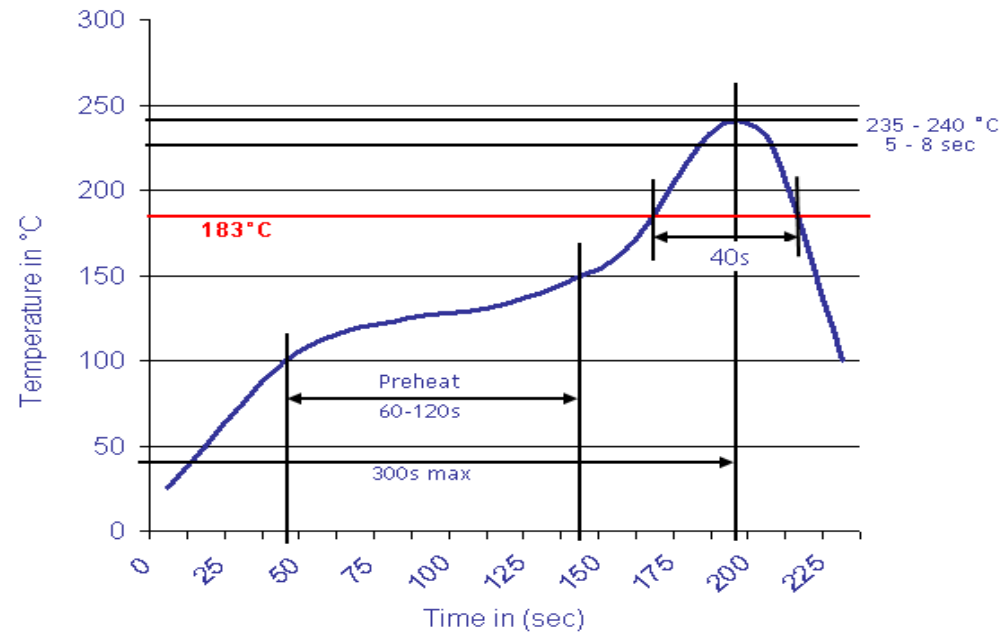
Part No.: **A11G002**

DRW:	Jason	CHKD	Wilson	MATL:	Wilson	TOLERANCE	Mason	DATE	14.07.2009	Customer:
APPD:	Schumi			FINISH	Jamy		Sheet No.	2 from 3		



Soldering - Profil

Classification Reflow Profile (JEDEC J-STD-020C)



Screwless Terminal Block /
Pitch 3.50mm

Part No.: **A11G002**

DRW:	Jason	CHKD	Wilson	MATL:	Wilson	TOLERANCE	Mason	DATE	14.07.2009
APPD:	Schumi			FINISH	Jamy		Sheet No.		3 from 3

Customer: