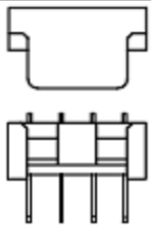


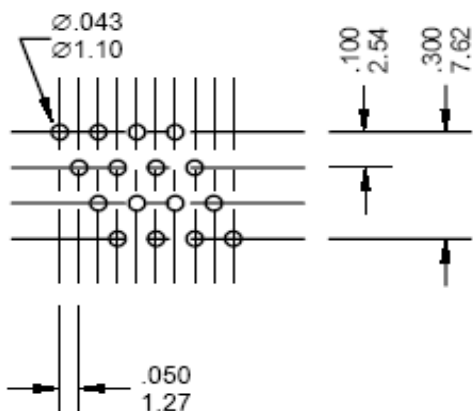
# EDCON-COMPONENTS



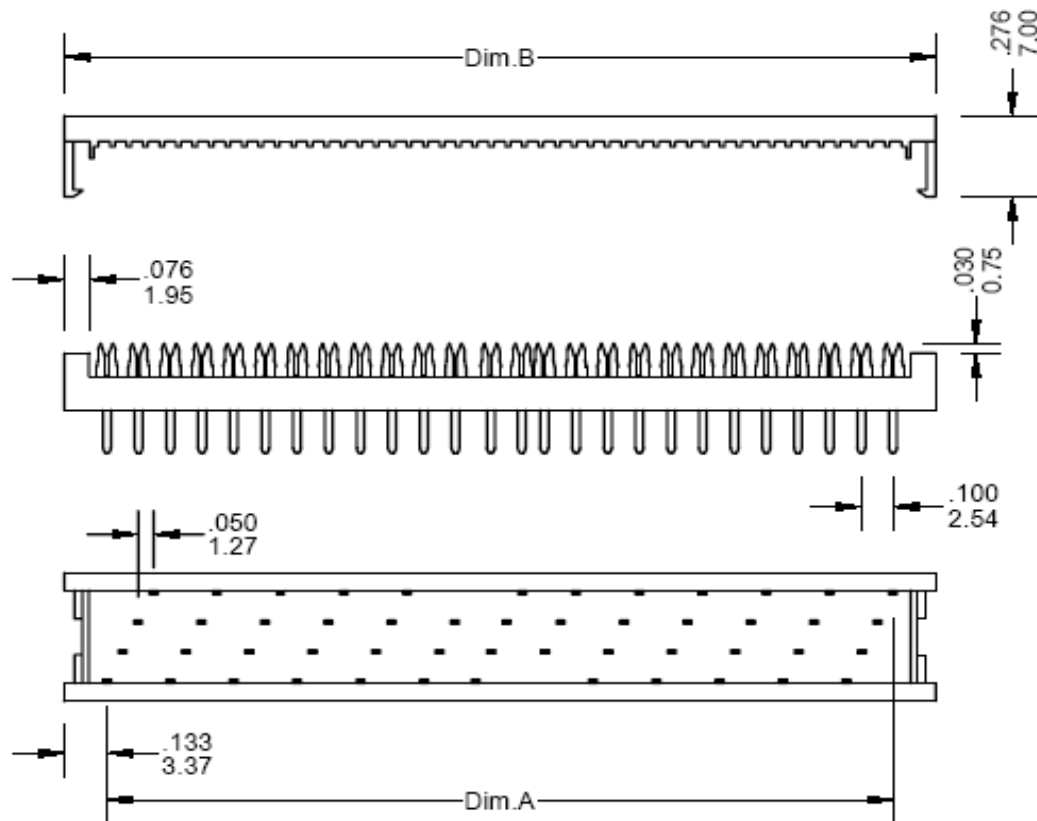
## Specifications

Current Rating:	3,0A
Insulation Resistance:	1000M Ohm min.
Contact Resistance:	20milli Ohm max.
Dielectric Voltage:	500V AC for one minute
Operating Temperature:	. -40°C ~ to +105°C
Insulator Material:	PBT/PA6T+30% G.F.(UL94V-0)
Contact Pin:	Brass
Contact Plating:	Gold or Sn overNi.
Applicable Wires:	AWG28 7stands pitch 1,27mm

## PCB Layout



## Drawing

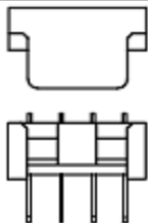


**IDC Pin Header 4Row Pitch  
2,54x1,27mm**

Part No.: **T88A006**

DRW:	Jason	CHKD	Wilson	MATL:	Wilson	TOLERANCE	Mason	DATE	10.06.2010
APPD:	Schumi			FINISH	Jamy		Sheet No.	1 from 4	Customer:

# EDCON-COMPONENTS

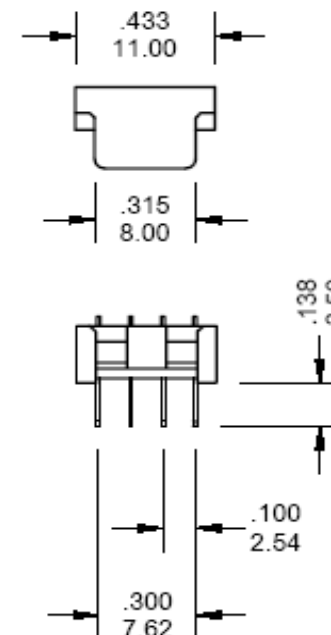
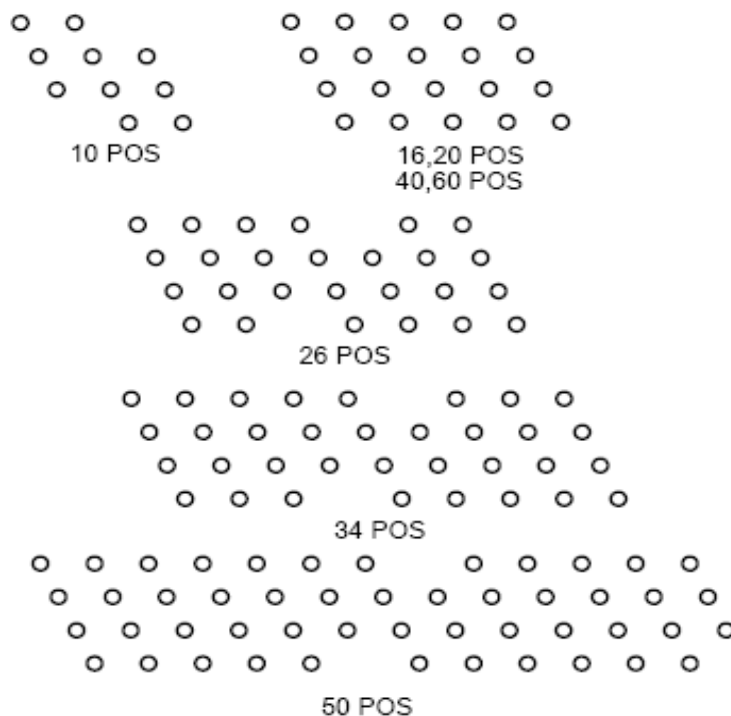


Pin Code length table free configuration

Drawing and Layout Positions

Dimension ( mm )				
	A			
A01	3,50			
A02				
A03				
A04				
A05				
A06				
A07				
A08				
A09				

Technical Dimensions (mm)				
Circuits	A	B		
10	11,43	18,17		
16	19,05	25,79		
20	24,13	30,87		
26	31,75	38,49		
34	41,91	48,65		
40	49,53	56,27		
50	62,23	68,97		
60	74,93	81,67		



**IDC Pin Header 4Row Pitch  
2,54x1,27mm**

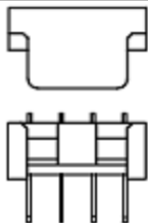
Part No.: **T88A006**

DRW:	Jason	CHKD	Wilson	MATL:	Wilson	TOLERANCE	Mason	DATE	10.06.2010
APPD:	Schumi			FINISH	Jamy		Sheet No.	2 from 4	Customer:

[www.edcon-components.com](http://www.edcon-components.com)

email: [info@edcon-components.com](mailto:info@edcon-components.com)

# EDCON-COMPONENTS



## Ordering Informations

Serie	No. of Pos.	Contact Plating	Material	Color of Body	Pin Length Configuration	ROHS	Packing			
<b>T88A006</b>	<b>XX</b>	<b>G0</b>	<b>PB</b>	<b>BK</b>	<b>A01</b>	<b>R</b>	<b>TY</b>			

<b>XX=</b> 10, 16, 20, 26, 34, 40, 50, 60P	<b>G0=</b> Gold Flash	<b>PB=</b> PBT +30% GF	<b>BK=</b> Black	<b>Axx =</b> Look Table	<b>N=</b> NO ROHS conform	<b>BU=</b> Bulk Ware
	<b>T0=</b> Tin plated		<b>GR=</b> Gray (427°C)		<b>R=</b> ROHS conform	<b>TU=</b> Tube Packing
	<b>GA=</b> 3µ Gold Plating		<b>EG=</b> Gray (413°C)			<b>TY=</b> Tray (Standard)
	<b>GB=</b> 5µ Gold Plating					
	<b>GC=</b> 10µ Gold Plating					
	<b>GD=</b> 30µ Gold Plating					
	<b>S0=</b> Selectiv Plating Gold Flash / Tin					
	<b>SD=</b> Selectiv Tin/ 5µGold					
<b>SD=</b> Selectiv Tin/ 10µ Gold Flash						
<b>SD=</b> Selectiv Tin/ 20µ Gold	<b>SD=</b> Selectiv Tin/ 30µ Gold					

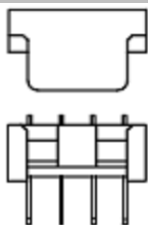
**IDC Pin Header 4Row Pitch  
2,54x1,27mm**

Part No.: **T88A006**

Customer:

DRW:	Jason	CHKD	Wilson	MATL:	Wilson	TOLERANCE	Mason	DATE	10.06.2010
APPD:	Schumi			FINISH	Jamy		Sheet No.		3 from 4

# EDCON-COMPONENTS



## Soldering Profile for Lead Soldering ( P.B.T. )



## Soldering Profile for Lead Free Soldering ( Nylon 6T )



**IDC Pin Header 4Row Pitch  
2,54x1,27mm**

Part No.: **T88A006**

DRW:	Jason	CHKD	Wilson	MATL:	Wilson	TOLERANCE	Mason	DATE	10.06.2010	Customer:
APPD:	Schumi			FINISH	Jamy		Sheet No.	4 from 4		