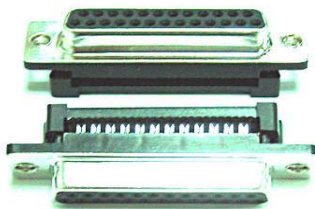


EDCON-COMPONENTS



Specifications

Features

Contact Positions: 09, 15, 25, 37Pos
 IDC Type for Flatcable with Pitch 1,27mm
 Optional plating available

Shell discription (Metal and plastic Shell combination)

Strain Relief discription: (only plastic strain relief)

Materials

Contact Brass and Phosphor Bronze
 Housing: PBT +30% Glass Fiber (UL 94V-0)
 Shell: cold roller steel

Electrical Characteristics

Current Rating: 2,5Ampere
 Withstanding Voltage: AC 1000V r.m.s.
 Insulation Resistance: 3000 Megaohms Minimum at DC500V
 Contact Resistance: 15 Milliohm Maximum
 Operation Temperature: -55°C ~ +105°C

Mechanical Characteristics:

Contact Resistance Force: 341gr. Maximum
 Contact Separation Force: 20gr. Minimum

Finishes:

Contact Plating (look Order Code)
 Shell Plating (look order code)

Dimensions (mm)

Male

Dim.	9	15	25	37	
A	30,80	39,20	53,05	69,40	
B	25,00	33,30	47,05	63,50	
C	16,90	25,25	38,95	55,40	

Female

Dim.	9	15	25	37	
A	30,80	39,20	53,05	69,40	
B	25,00	33,30	47,05	63,50	
C	16,30	24,60	38,35	54,80	

**D-Sub Connector I.D.C. for
 Flatcable Pitch 1,27mm
 Metall/Plastic Shell**

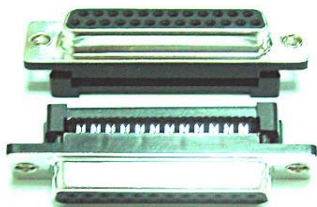
Part No.: **T24G200**

DRW:	Jason	CHKD	Wilson	MATL:	Wilson	TOLERANCE	Mason	DATE	19.03.2018	Customer:
APPD:	Schumi			FINISH	Jamy		Sheet No.	1 from 4		

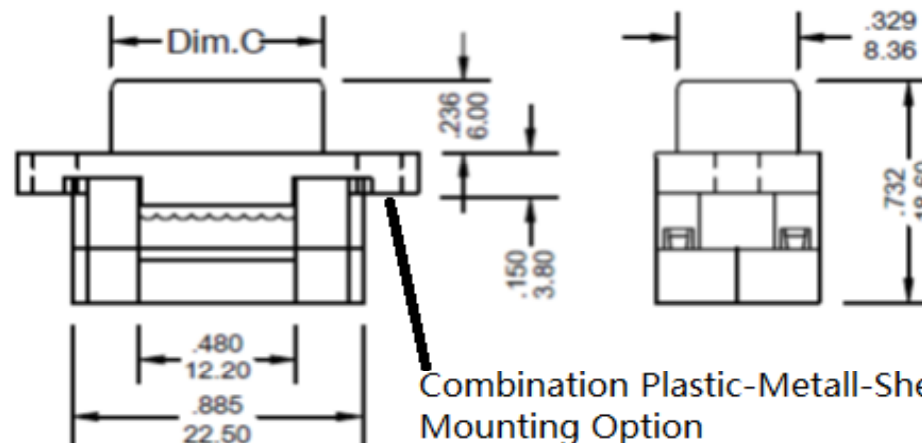
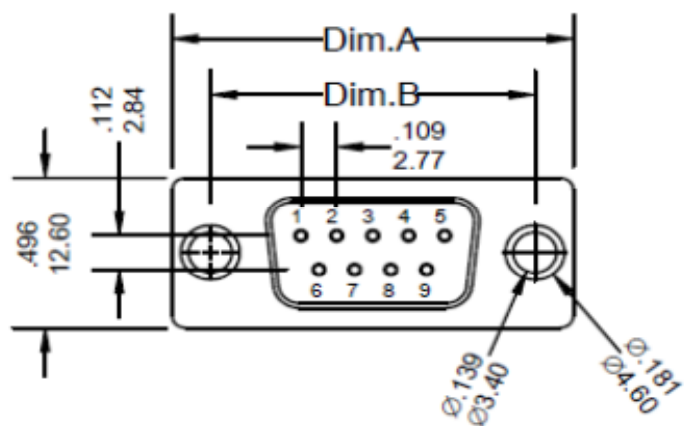
www.edcon-components.com

email: info@edcon-components.com

EDCON-COMPONENTS



Male Contact



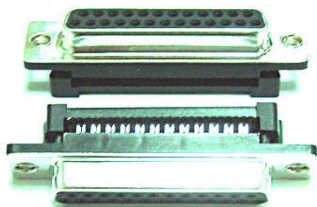
Combination Plastic-Metall-Shell
 Mounting Option
 A with 3,4mm Hole
 B= with Fixed UNC-Nut
 C= with fixed M3-Nut

**D-Sub Connector I.D.C. for
 Flatcable Pitch 1,27mm
 Metall/Plastic Shell**

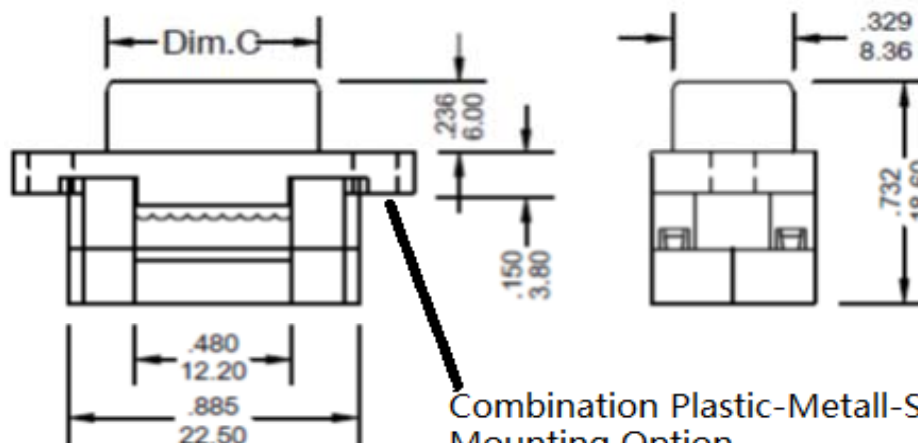
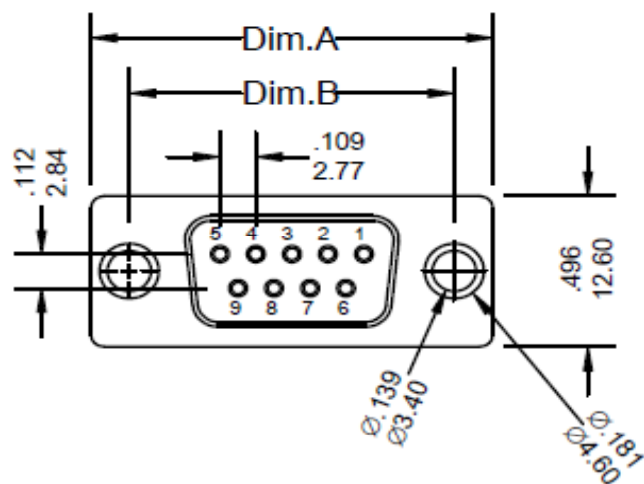
Part No.: **T24G200**

DRW:	Jason	CHKD	Wilson	MATL:	Wilson	TOLERANCE	Mason	DATE	19.03.2018
APPD:	Schumi			FINISH	Jamy		Sheet No.	2 from 4	Customer:

EDCON-COMPONENTS



Female Contact



Combination Plastic-Metall-Shell
Mounting Option
A with 3,4mm Hole
B= with Fixed UNC-Nut
C= with fixed M3-Nut

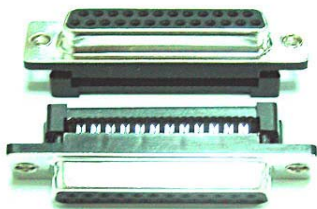
**D-Sub Connector I.D.C. for
Flatcable Pitch 1,27mm
Metal/Plastic Shell**

Part No.: **T24G200**

DRW:	Jason	CHKD	Wilson	MATL:	Wilson	TOLERANCE	Mason	DATE	19.03.2018
APPD:	Schumi			FINISH	Jamy		Sheet No.		3 from 4

Customer:

EDCON-COMPONENTS



Ordering Informations

Serie	No. of contacts.	Contact Type	Shell Finish	Mounting Options	Strain Relief	Options 2	Contact Plating	Plastic Color	ROHS	Packing
T24G200	09	M	T	A	0	0	SF	BL	R	TY

09= Contacts	M= Male	T= Tin	A= with 3,4mm Hole	0= w/o plastic strain relief	0= no options	SF= Selective Gold flash	BK= Black	R= ROHS Conform	TY= Tray Packing
09 ~ 37 contacts	F= Female		B= with fixed UNC-Nut	A= with plastic strain relief		GF= Gold flash	BL= Blue	N= NON ROHS Conform	BU= Bulk-Ware
			C= with fixed M3-Nut			SD= 30µ Selective Gold flash	WH= White		
							GY= Gray		

D-Sub Connector I.D.C. for Flatcable Pitch 1,27mm Metall/Plastic Shell

Part No.: **T24G200**

DRW:	Jason	CHKD	Wilson	MATL:	Wilson	TOLERANCE	Mason	DATE	19.03.2018
APPD:	Schumi			FINISH	Jamy		Sheet No.		4 from 4

Customer: