

EDCON-COMPONENTS



Specifications

Features

- Contact Positions: 09, 15, 25, 37, 50
- Designed for use with data signal carrying devices
- Available in sockets style
- Optional plating style
- Mates with industry compatible connectors

Materials

- Contact Brass and Phosphor:
- Housing: PBT +30% Glass Fiber (UL 94V-0)
- Shell cold roller steel

Electrical Characteristics

- Current Rating: 5Ampere
- Withstanding Voltage: AC 1250V r.m.s.
- Insulation Resistance: 5000 Megaohms Minimum at DC500V
- Contact Resistance: 15 Milliohm Maximum
- Operation Temperature: -55°C ~ +105°C
- Applicable: P.C. Board thickness: (1,6mm)

Mechanical Characteristics:

- Contact Resistance Force: 341gr. Maximum
- Contact Separation Force: 20gr. Minimum

Finishes:

- Contact Plating (look Order Code)
- Shell Plating (look order code)

Dimensions (mm)

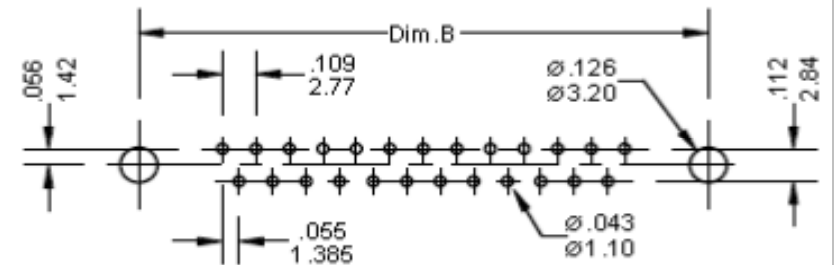
Male Contact

Pos.	9	15	25	37	50
Dim.A	30,80	39,20	53,05	69,40	66,90
Dim.B	25,00	33,30	47,05	63,50	61,10
Dim.C	16,90	25,25	38,95	55,40	52,80

Female Contact

Pos.	9	15	25	37	50
Dim.A	30,80	39,20	53,05	69,40	66,90
Dim.B	25,00	33,30	47,05	63,50	61,10
Dim.C	16,30	24,60	38,35	54,80	52,40

P.C.B. Layout



**D-Sub Connector Straight Pin
for PCB**

Part No.: **T24E200**

Customer:

DRW:	Jason	CHKD	Wilson	MATL:	Wilson	TOLERANCE	Mason	DATE	18.04.2019
APPD:	Schumi			FINISH	Jamy		Sheet No.		1 from 5

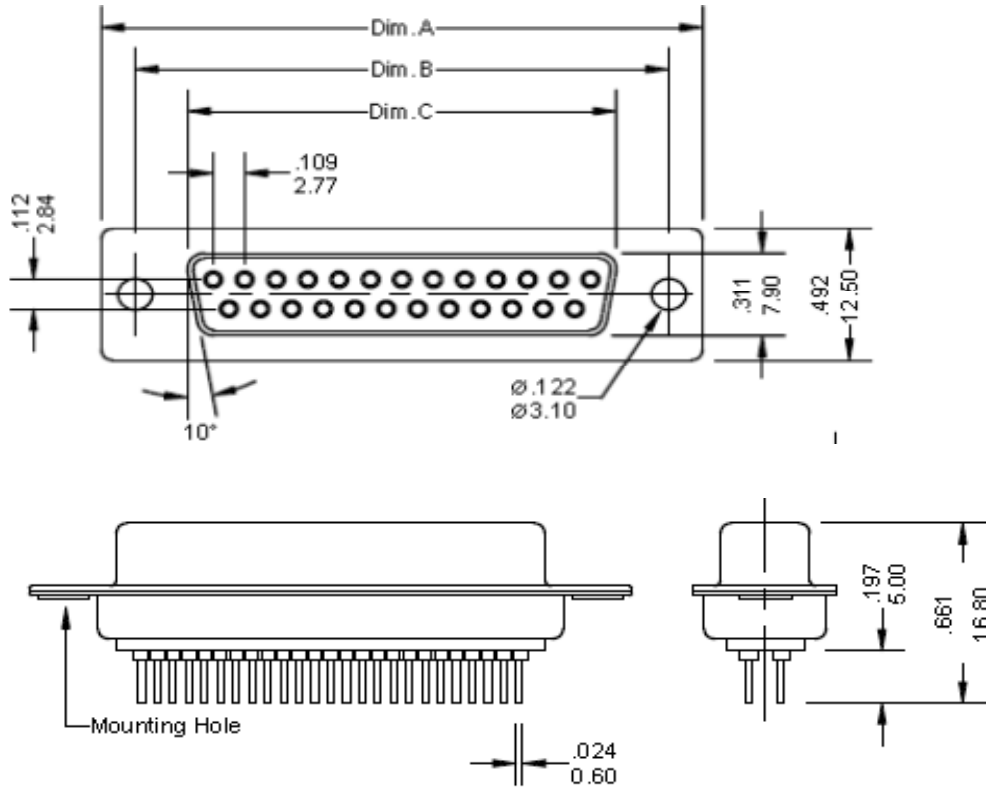
www.edcon-components.com

email: info@edcon-components.com

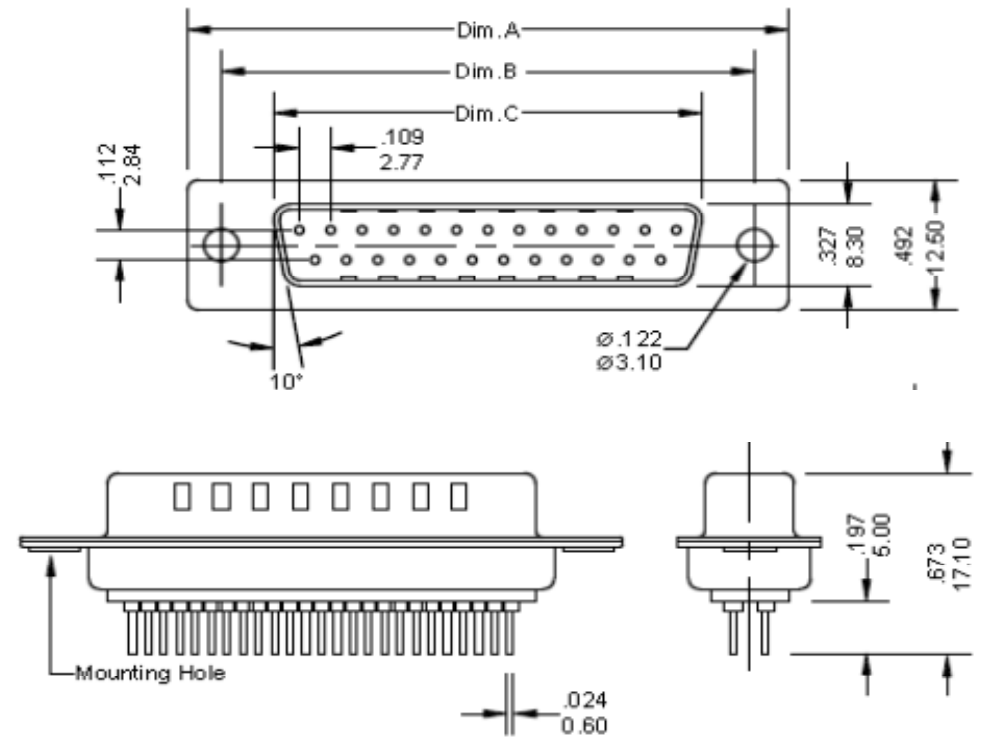
EDCON-COMPONENTS



Female Contact



Male Contact



**D-Sub Connector Straight Pin
for PCB**

Part No.: **T24E200**

Customer:

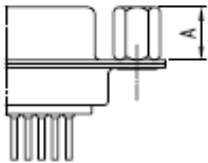
DRW:	Jason	CHKD	Wilson	MATL:	Wilson	TOLERANCE	Mason	DATE	18.04.2019
APPD:	Schumi			FINISH	Jamy		Sheet No.	2 from 5	

EDCON-COMPONENTS

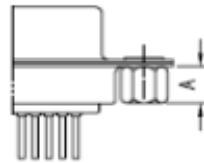


Mounting Options

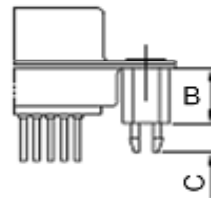
Monting Option B



Monting Option C

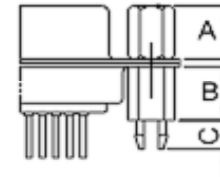


Monting Option E



C=3~4mm

Monting Option D



C=3~4mm

B-Code	Length A
B01	5,0mm
B02	3,0mm
B03	5,2mm
B04	4,8mm
B05	5,8mm
B06	4,0mm

C-Code	Length A
C01	5,0mm
C02	3,0mm
C03	5,2mm
C04	4,8mm
C05	5,8mm
C06	4,0mm

E-Code	Length B
E01	6,0mm
E02	
E03	
E04	
E05	
E06	

D-Code	Length/mm	
	A	B
D01	5,0	6,0
D02	3,0	6,0
D03	5,2	6,0
D04	4,8	6,0
D05	5,8	6,0
D06	4,0	6,0

**D-Sub Connector Straight Pin
for PCB**

Part No.: **T24E200**

DRW:	Jason	CHKD	Wilson	MATL:	Wilson	TOLERANCE	Mason	DATE	18.04.2019
APPD:	Schumi			FINISH	Jamy		Sheet No.		3 from 5

Customer:

EDCON-COMPONENTS



Ordering Informations

Serie	No. of contacts.	Contact Type	Shell Finish	Mounting Options	Screw Type	Mounting Option	Length Code Option	Contact Plating	Plastic Color	ROHS	Packing
T24E200	09	F	T	A	1	X	XX	GF	BK	R	TY

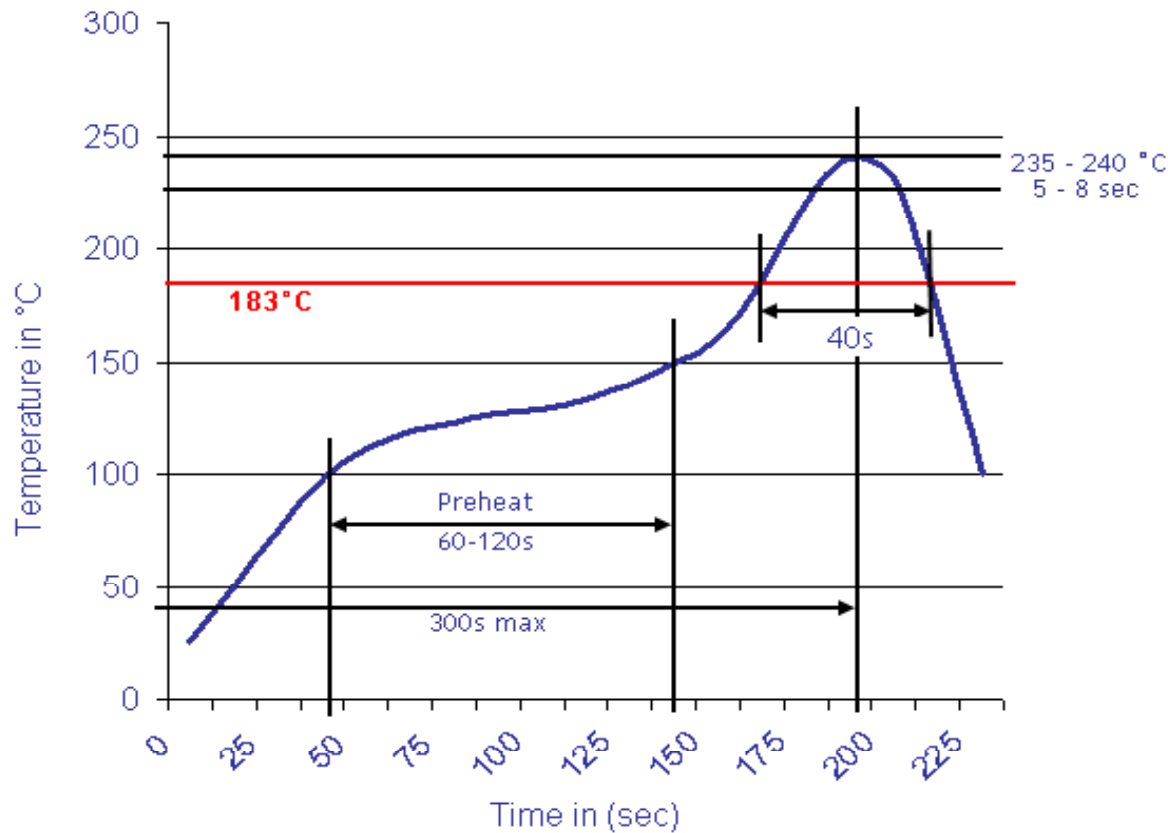
09= Contacts	F= Female	N= Nickel	A= Through Hole	0= without Screw	0= without options A;B;C;D	00= No Option	GF= Gold Flash	BK= Black	R= ROHS Conform	TY= Tray Packing
09, 15, 25, 37, 50 Contacts	M= Male	T= Tin	B= Rivet Nut on Frontside	1= UNC-Nut Thread	X= with options A;B;C;D	XXX= look options B,C,D,E Code table	GA= 10µ Gold	WH= White	N= NON ROHS Conform	BU= Bulk-Ware
			C= Rived Nut on Rear Side	2= M3- Nut Thread			GB= 15µ Gold	BL= Blue		
			E= Rived w. Snap-In on Rear Side				GC= 30µ Gold	GY= Gray		
			D= Rived Nuts on Front Side / Rear Side				GD= 50µ Gold			
							SF= Selective Gold flash			
							SA= 5µ Selective Gold flash			
							SB= 10µ Selective Gold flash			
							SD= 30µ Selective Gold flash			
							SC= 15µ Selective Gold flash			
D-Sub Connector Straight Pin for PCB										
Part No.:										T24E200

DRW:	Jason	CHKD	Wilson	MATL:	Wilson	TOLERANCE	Mason	DATE	18.04.2019	Customer:
APPD:	Schumi			FINISH	Jamy			Sheet No.	4 from 5	



Soldering Profile Curve

Classification Reflow Profile (JEDEC J-STD-020C)



D-Sub Connector Straight Pin for PCB	
Part No.:	T24E200
Customer:	

DRW:	Jason	CHKD	Wilson	MATL:	Wilson	TOLERANCE	Mason	DATE	18.04.2019
APPD:	Schumi			FINISH	Jamy		Sheet No.		5 from 5