

EDCON-COMPONENTS



Specifications

Features

Contact Positions: 09, 15, 25, 37, 50
 Designed for use with data signal carrying devices
 Available in sockets style
 Optional plating style
 Mates with industry compatibel connectors

Materials

Contact Brass:
 Housing: PBT +30% Glass Fiber (UL 94V-0)
 Shell cold roller steel

Electrical Characteristics

Current Rating: 5Ampere
 Withstanding Voltage: AC 1250Vr.m.s.
 Insulation Resistance: 5000 Megaohms Minimum at DC500V
 Contact Resistance: 15 Milliohm Maximum
 Operation Temperature: -55°C ~ +105°C
 Applicable wire: #20AWG ~ #28AWG

Mechanical Characteristics:

Contact Resistance Force: 341gr. Maximum
 Contact Separation Force: 20gr. Minimum

Finishes:

Contact Plating (look Order Code)
 Shell Plating (look order code)

Dimensions (mm)

Male Contact

	9	15	25	37	50
Dim.A	30,80	39,20	53,05	69,40	66,90
Dim.B	25,00	33,30	47,05	63,50	61,10
Dim.C	16,90	25,25	38,95	55,40	52,80

Female Contact

	9	15	25	37	50
Dim.A	30,80	39,20	53,05	69,40	66,90
Dim.B	25,00	33,30	47,05	63,50	61,10
Dim.C	16,30	24,60	38,35	54,80	52,40

**D-Sub Connector SOLDER CUP
for Cable**

Part No.: **T24E100**

Customer:

DRW:	Jason	CHKD	Wilson	MATL:	Wilson	TOLERANCE	Mason	DATE	20.07.2017
APPD:	Schumi			FINISH	Jamy		Sheet No.		1 from 5

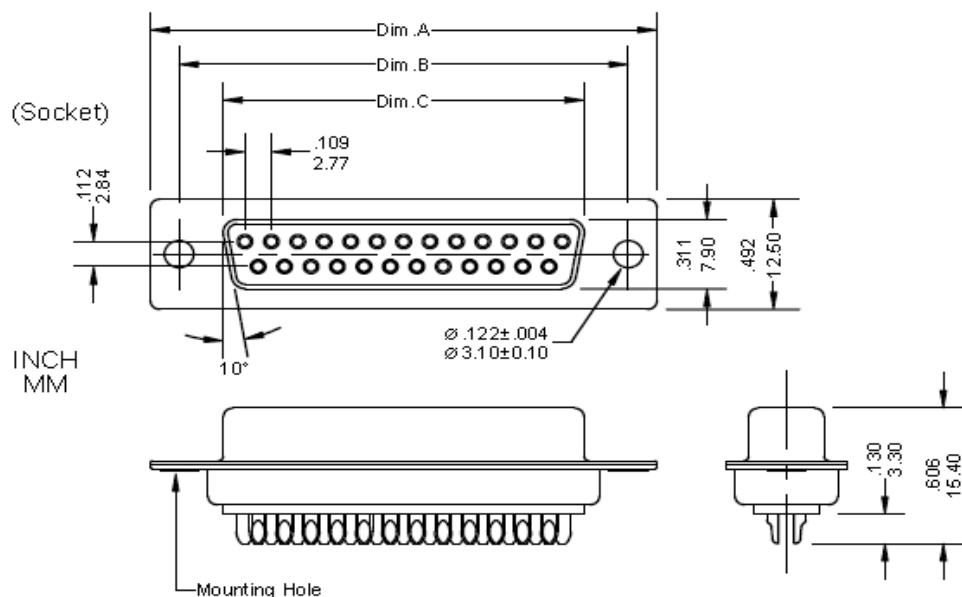
www.edcon-components.com

email: info@edcon-components.com

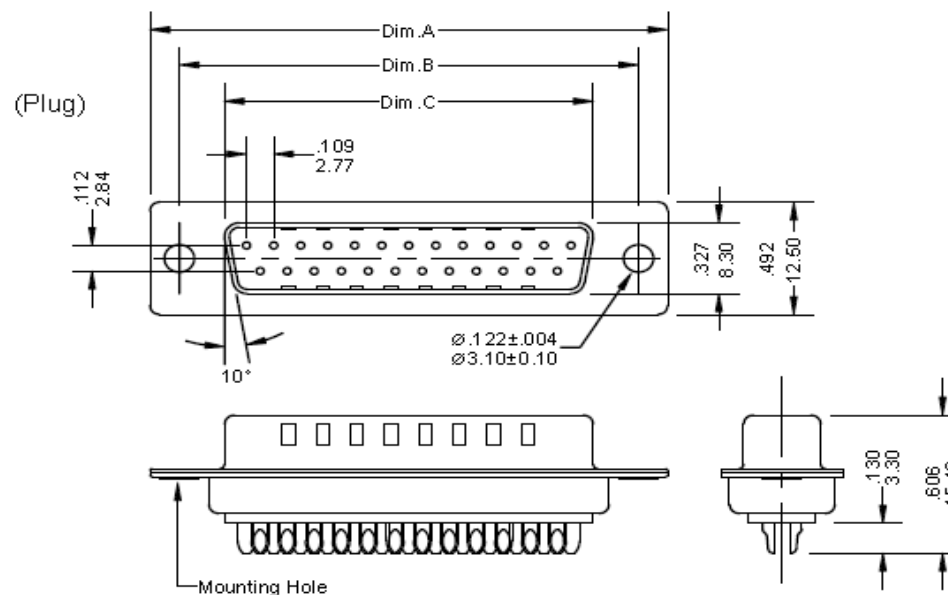
EDCON-COMPONENTS



Female Contact



Male Contact



**D-Sub Connector SOLDER CUP
for Cable**

Part No.: **T24E100**

DRW:	Jason	CHKD	Wilson	MATL:	Wilson	TOLERANCE	Mason	DATE	20.07.2017
APPD:	Schumi			FINISH	Jamy		Sheet No.	2 from 5	Customer:

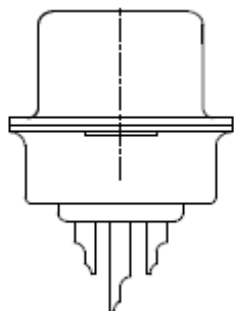
www.edcon-components.com

email: info@edcon-components.com

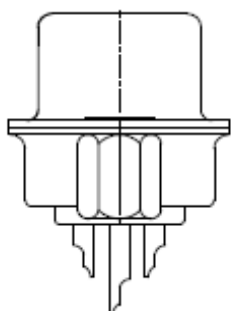
EDCON-COMPONENTS



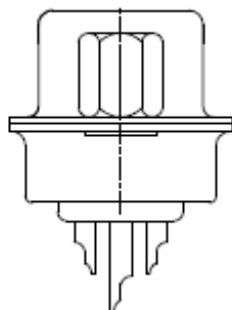
Mounting Options



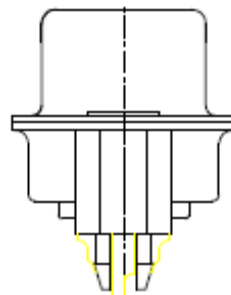
A= No accessories



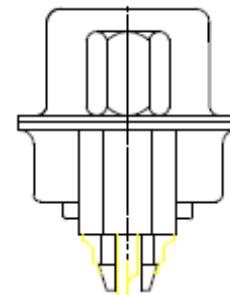
B= Rear Rivet



C= Front Rivet



D= Stand-off on rear Side Shell



E= Stand-off on rear Side Shell + Front rivet

D-Sub Connector SOLDER CUP for Cable

Part No.: **T24E100**

DRW:	Jason	CHKD	Wilson	MATL:	Wilson	TOLERANCE	Mason	DATE	20.07.2017
APPD:	Schumi			FINISH	Jamy		Sheet No.		3 from 5

Customer:

EDCON-COMPONENTS



Ordering Informations

Serie	No. of contacts.	Contact Type	Shell Finish	Mounting Options	No function	No function	Contact Plating	Plastic Color	ROHS	Packing
-------	------------------	--------------	--------------	------------------	-------------	-------------	-----------------	---------------	------	---------

T24E100	09	F	T	A	0	0	GF	BK	R	TY
----------------	-----------	----------	----------	----------	----------	----------	-----------	-----------	----------	-----------

09= Contacts	F= Female	N= Nickel	A= Through Hole			GF= Gold Flash	BK= Black	R= ROHS Conform	TY= Tray Packing
09, 15, 25, 37, 50 Contacts	M= Male	T= Tin	B= Rivet on Rear-Side UNC4-40			GA= 10µ Gold	WH= White	N= NON ROHS Conform	BU= Bulk-Ware
		C= Zinc (Chromatic)	C= Rived on Frontside UNC 4-40			GB= 15µ Gold	BL= Blue		
			D= Stand off on Rear-Side w. UNC-4-40			GC= 30µ Gold	GY= Gray		
			E= Stand off on Rear-Side + Nut on Frontside UNC4-40			GD= 50µ Gold			
						SF= Selectiv Gold Flash			
						SA= 5µ Selectiv Gold Flash			
						SB= 10µ Selectiv Gold Flash			
						SC= 20µ Selectiv Gold Flash	SD= 30µ Selectiv Gold Flash		

D-Sub Connector SOLDER CUP for Cable

Part No.: **T24E100**

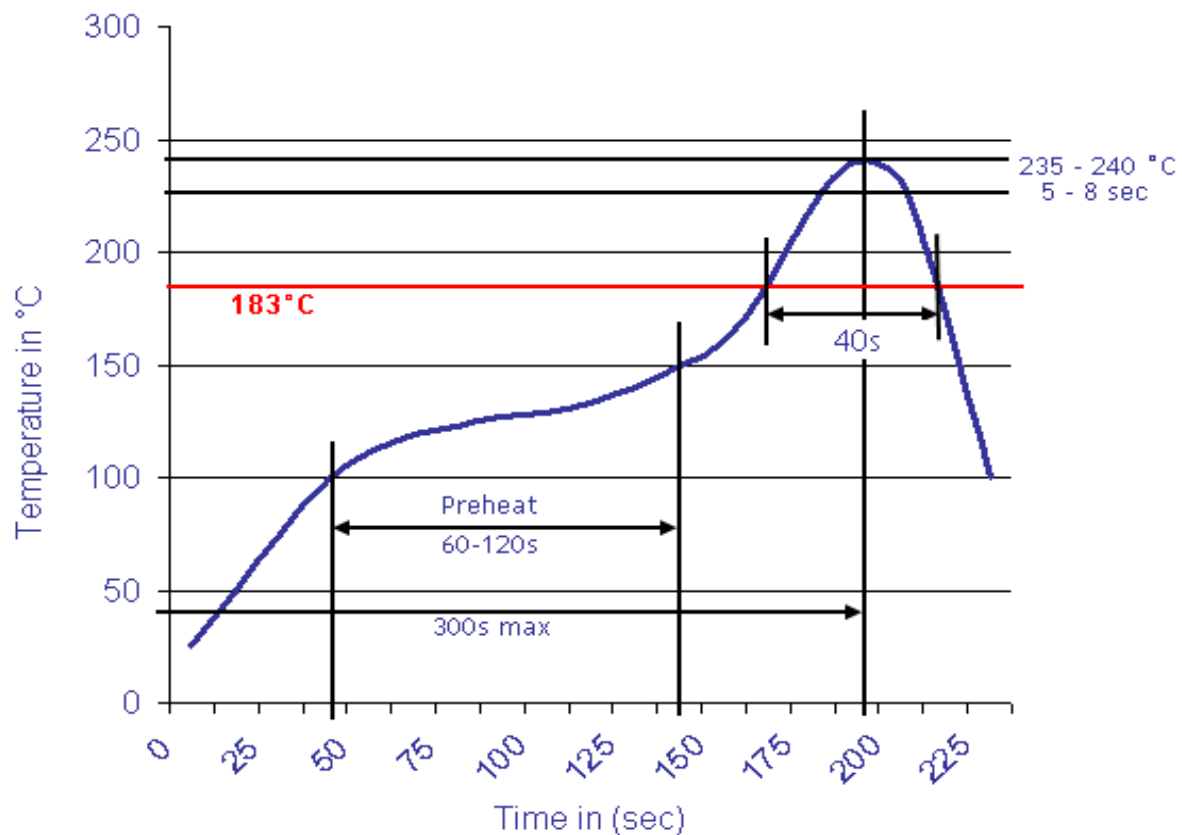
DRW:	Jason	CHKD	Wilson	MATL:	Wilson	TOLERANCE	Mason	DATE	20.07.2017
APPD:	Schumi			FINISH	Jamy		Sheet No.		4 from 5

Customer:



Soldering Profile Curve

Classification Reflow Profile (JEDEC J-STD-020C)



D-Sub Connector SOLDER CUP for Cable	
Part No.:	T24E100
Customer:	

DRW:	Jason	CHKD	Wilson	MATL:	Wilson	TOLERANCE	Mason	DATE	20.07.2017
APPD:	Schumi			FINISH	Jamy		Sheet No.	5 from 5	