

EDCON-COMPONENTS



Specifications

Features

Contact Positions: 15, 26, 44, 62, 78
 Designed for different electronic equipments
 For high reliability and high density packing
 Optional plating available
 Mates with industry compatible connectors

Materials

Contact Brass
 Housing: PBT +30% Glass Fiber (UL 94V-0)
 Shell: cold roller steel

Electrical Characteristics

Current Rating: 5Ampere
 Withstanding Voltage: AC 1250V r.m.s.
 Insulation Resistance: 5000 Megaohms Minimum at DC500V
 Contact Resistance: 15 Milliohm Maximum
 Operation Temperature: -55°C ~ +105°C
 Applicable: P.C. Board thickness: (1,6mm)
 Applicable wire # 20AWG ~ 28AWG

Mechanical Characteristics:

Contact Resistance Force: 341gr. Maximum
 Contact Separation Force: 20gr. Minimum

Finishes:

Contact Plating (look Order Code)
 Shell Plating (look order code)

Dimensions (mm)

Male Contact

Pos.	15	26	44	62	78
Dim.A	30,80	39,20	53,05	69,40	66,93
Dim.B	25,00	33,30	47,05	63,50	61,11
Dim.C	16,30	24,60	38,35	54,87	52,43
Dim.D	7,90	7,90	7,90	7,90	10,70
Dim.E	12,50	12,50	12,50	12,50	15,40

Female Contact

Pos.	15	26	44	62	78
Dim.A	30,80	39,20	53,05	69,40	66,93
Dim.B	25,00	33,30	47,05	63,50	61,11
Dim.C	16,90	25,30	39,00	55,40	52,90
Dim.D	7,90	7,90	7,90	7,90	11,20
Dim.E	12,50	12,50	12,50	12,50	15,40

P.C.B. Layout

**D-Sub High Density Connector
Solder Cup for cable**

Part No.: **T23001**

Customer:

DRW:	Jason	CHKD	Wilson	MATL:	Wilson	TOLERANCE	Mason	DATE	20.07.2017
APPD:	Schumi			FINISH	Jamy		Sheet No.		1 from 5

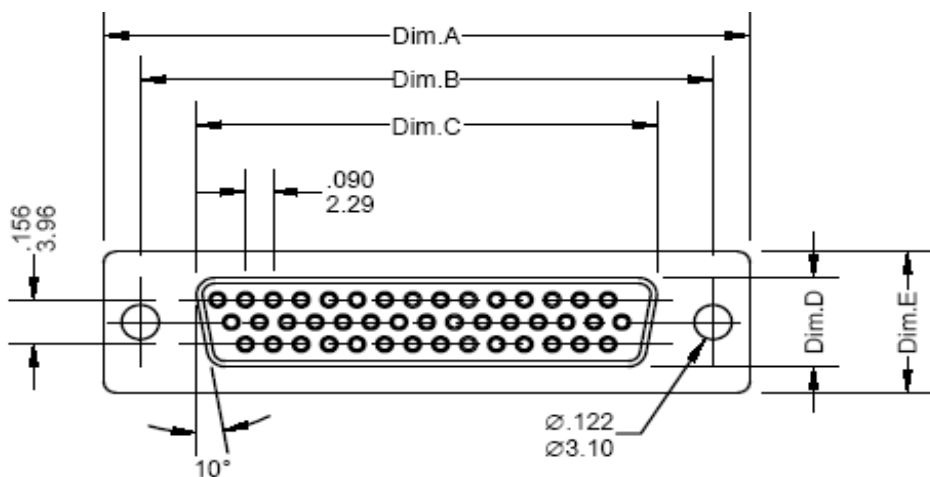
www.edcon-components.com

email: info@edcon-components.com

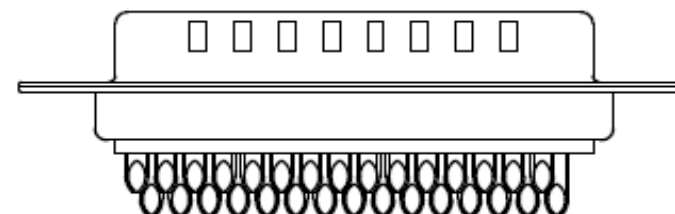
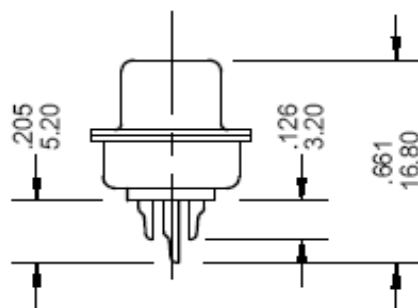
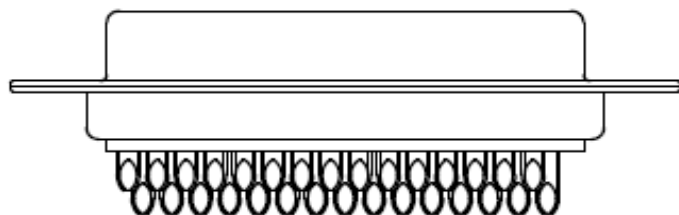
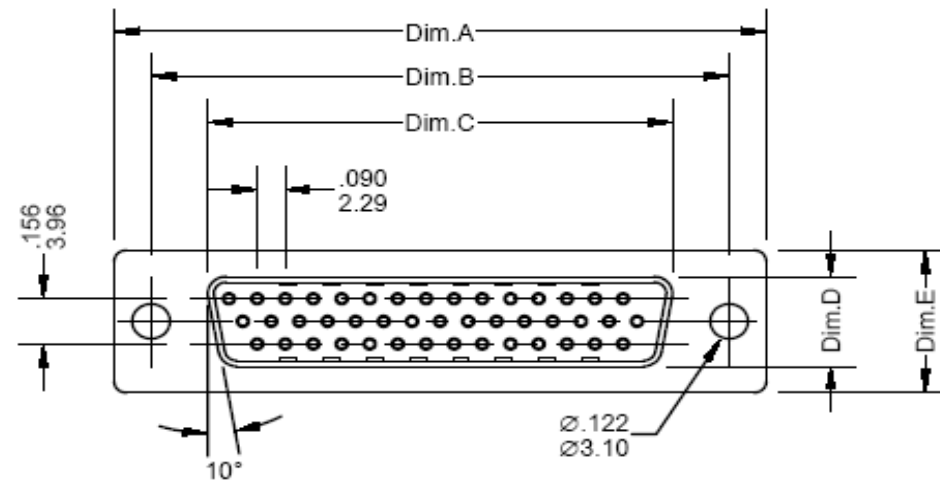
EDCON-COMPONENTS



Female Contact



Male Contact



**D-Sub High Density Connector
Solder Cup for cable**

Part No.: **T23001**

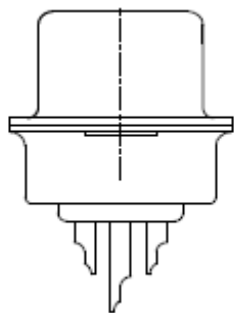
DRW:	Jason	CHKD	Wilson	MATL:	Wilson	TOLERANCE	Mason	DATE	20.07.2017
APPD:	Schumi			FINISH	Jamy		Sheet No.		2 from 5

Customer:

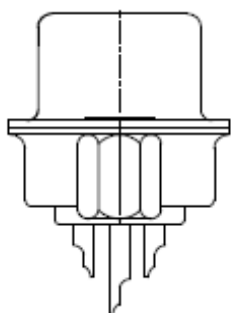
EDCON-COMPONENTS



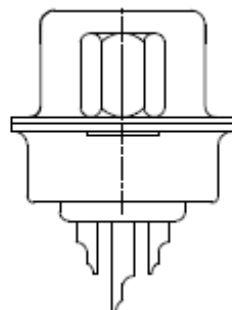
Mounting Options



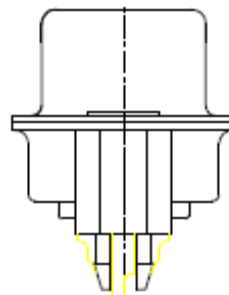
0= No accessories



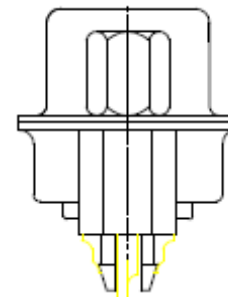
B= Rear Rivet



C= Front Rivet



D= Stand-off on rear Side Shell



E= Stand-off on rear Side Shell + Front rivet

**D-Sub High Density Connector
Solder Cup for cable**

Part No.: **T23001**

DRW:	Jason	CHKD	Wilson	MATL:	Wilson	TOLERANCE	Mason	DATE	20.07.2017
APPD:	Schumi			FINISH	Jamy		Sheet No.		3 from 5

Customer:

EDCON-COMPONENTS



Ordering Informations

Serie	No. of contacts.	Contact Type	Shell Finish	Mounting Options	Mounting Options	No function	Contact Plating	Plastic Color	ROHS	Packing
T23001	15	F	T	A	0	0	GF	WH	R	TY

15= Contacts	F= Female	T= Tin	A= Through Hole	Look Page Monting Options	0= No function	GF= Gold Flash	WH= White	R= ROHS Conform	TY= Tray Packing	
15, 26, 44, 62, 78 Contacts	M= Male	N= Nickel	B= Thread Insert UNC-40			GA= 10µ Gold	BK= Black			N= NON ROHS Conform
			C= Rived Nuts UNC 4-40 on Rear Side			GB= 15µ Gold	BL= Blue			
						D= Rived Nuts UNC 4-40 on Front Side	GC= 30µ Gold	GY= Gray		
						GD= 50µ Gold				
						SF= Selective Gold flash				
						SA= 5µ Selective Gold flash				
				SB= 10µ Selective Gold flash						
				SC= 15µ Selective Gold flash	SD= 30µ Selective Gold flash					

D-Sub High Density Connector Solder Cup for cable

Part No.: **T23001**

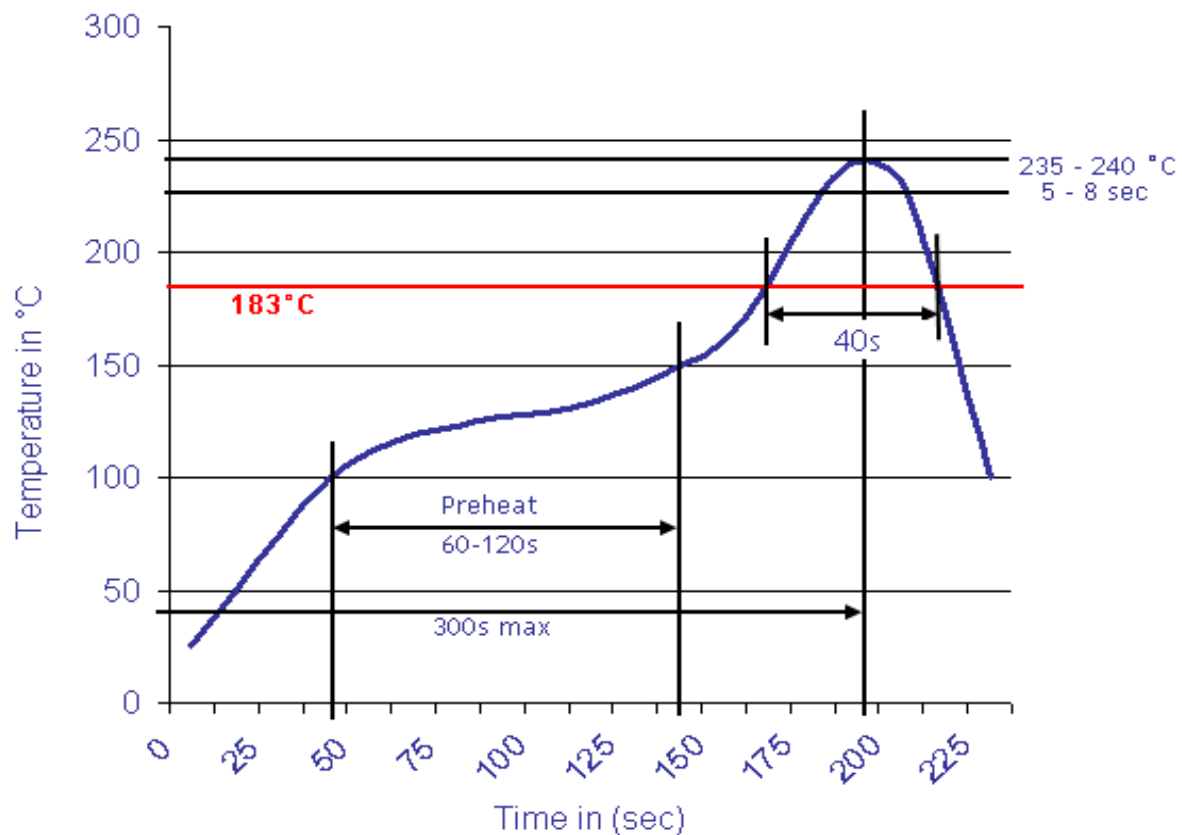
DRW:	Jason	CHKD	Wilson	MATL:	Wilson	TOLERANCE	Mason	DATE	20.07.2017
APPD:	Schumi			FINISH	Jamy			Sheet No.	4 from 5

Customer:



Soldering Profile Curve

Classification Reflow Profile (JEDEC J-STD-020C)



**D-Sub High Density Connector
Solder Cup for cable**

Part No.: **T23001**

DRW:	Jason	CHKD	Wilson	MATL:	Wilson	TOLERANCE	Mason	DATE	20.07.2017
APPD:	Schumi			FINISH	Jamy		Sheet No.	5 from 5	Customer: