

EDCON-COMPONENTS



Technical Discription

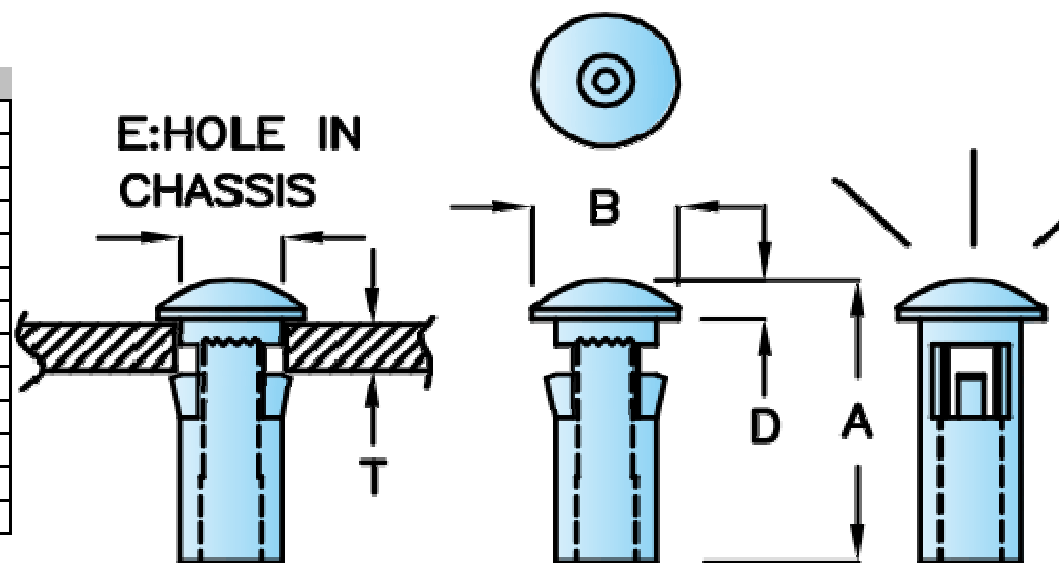
Material: PC (UL)
 Flame Class Class 94V-2
 Color Clear

Drawing

Dimension (mm)

Order Code Type 1		
A	11,6	
B	5,0	
D	1,5	
E	3,6	Hole in Chassis
T	3,0	Hole Chassis Thickness
	2,0	Suitable Diameter Fiber
Order Code Type 2		
A	6,9	
B	5,1	
D	1,1	
E	4,5	Hole in Chassis
T	1,0	Hole Chassis Thickness
	3,0	Suitable Diameter Fiber

Order Code Type 3		
A	6,95	
B	5,1	
D	1,1	
E	4,5	Hole in Chassis
T	1,5	Hole Chassis Thickness
	3,0	Suitable Diameter Fiber



LED CAP

Part No.: **N24022**

Customer:

DRW:	Jason	CHKD	Wilson	MATL:	Wilson	TOLERANCE	Mason	DATE	27.05.2014
APPD:	Schumi			FINISH	Jamy		Sheet No.		1 from 2

EDCON-COMPONENTS



Ordering Informations

Serie	Order Code	Spezial Function	ROHS	Packing						
-------	------------	---------------------	------	---------	--	--	--	--	--	--

N24022	1	0	R	BU						
---------------	----------	----------	----------	-----------	--	--	--	--	--	--

1= Order Code Type 1	0= No function	R= ROHS Conform	BU= Bulk- Ware
2= Order Code Type 2			IV= Individual Package
3= Order Code Type 3			

LED CAP
Part No.: N24022
Customer:

DRW:	Jason	CHKD	Wilson	MATL:	Wilson	TOLERANCE	Mason	DATE	27.05.2014
APPD:	Schumi			FINISH	Jamy		Sheet No.		2 from 2