

EDCON-COMPONENTS

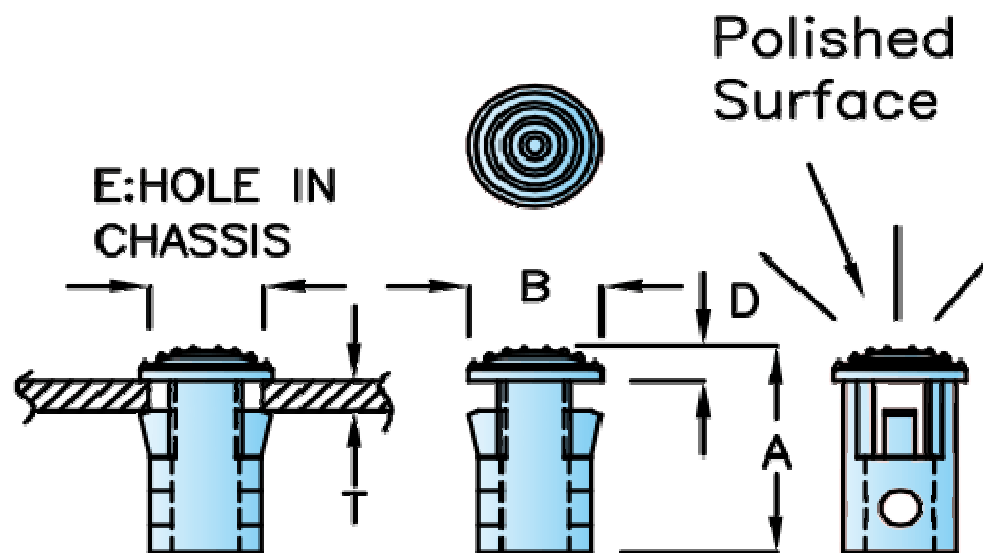


Technical Discription

Material: PC (UL)
 Flame Class Class 94V-2
 Color Clear

Drawing

Dimension (mm)		
A	4,5	
B	5,0	
D	1,0	
E	3,5	Hole in Chassis
T	1,0	Chassis Thickness
	2,0	Suitable Diamter Fiber



LED CAP	
Part No.:	N24021
Customer:	

DRW:	Jason	CHKD	Wilson	MATL:	Wilson	TOLERANCE	Mason	DATE	27.05.2014
APPD:	Schumi			FINISH	Jamy		Sheet No.		1 from 2

EDCON-COMPONENTS



Ordering Informations

Serie	Order Code	Spezial Funktion	ROHS	Packing						
-------	------------	---------------------	------	---------	--	--	--	--	--	--

N24021	-	0	0	R	BU					
---------------	---	----------	----------	----------	-----------	--	--	--	--	--

0 = No function	0 = No function	R = ROHS Conform	BU = Bulk- Ware
			IV = Individual Package

LED CAP
Part No.: N24021
Customer:

DRW:	Jason	CHKD	Wilson	MATL:	Wilson	TOLERANCE	Mason	DATE	27.05.2014
APPD:	Schumi			FINISH	Jamy			Sheet No.	2 from 2