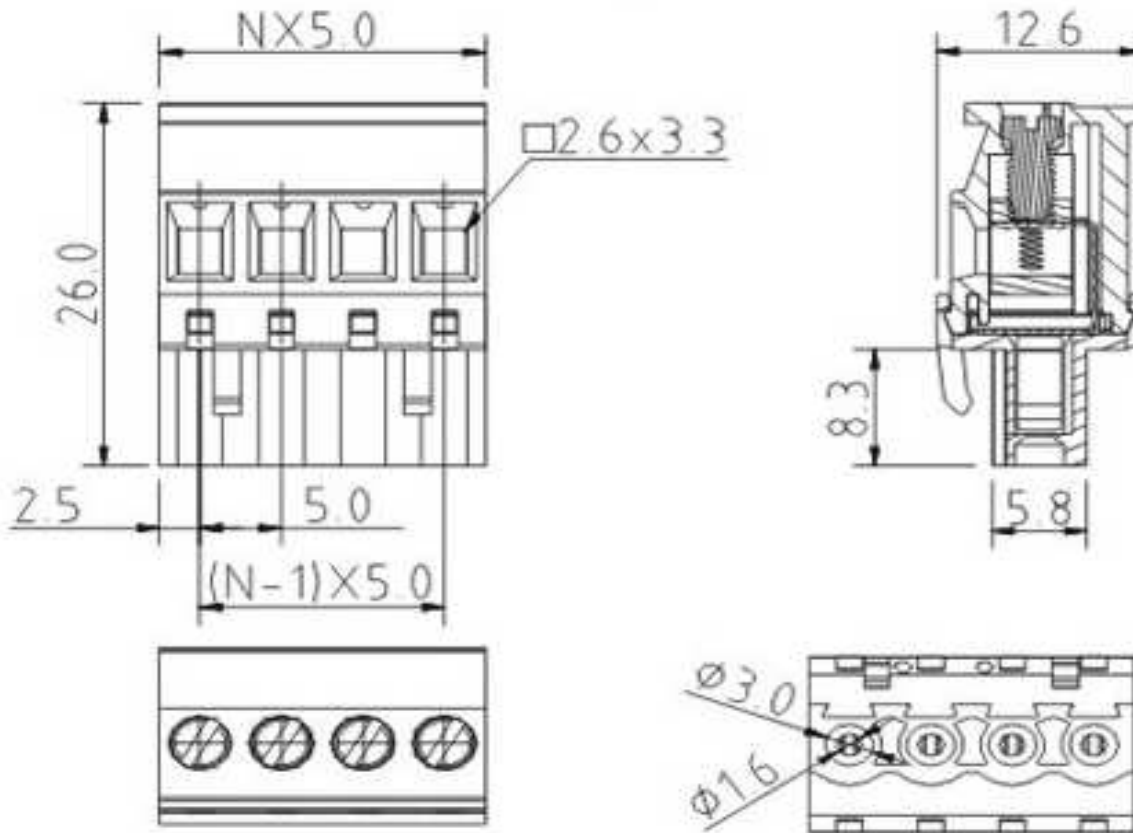


EDCON-COMPONENTS



Drawing

Specification



APPROVAL



Electrical

	UL	IEC
Standard	UL	IEC
Rated voltage	300V	320V, 400V
Rated current	15A	10A
Wire range	28-12 AWG	2.5mm ²
Withstanding voltage	AC 2500V/1min	

Mechanical

Ambient temperature	-40°C ~ +105°C	
Strip length	7mm	
Screw, Torque	M3, 0.5Nm (3.5Lb-In.)	

Dimensions

Pitch	5.00mm	
Poles	2P - 24P	2P - 12P

Material

Housing	PA66 (UL94V-0)
Contact	Phosphor Bronze
Cage	Brass, Ni plated
Terminal screw	steel, Cr ³⁺ Zn plated
Operating Temperature	-40°C ~ + 115°C

Pluggable Terminal Block / Pitch 5.00mm

Part No.: A14L064

Customer:

DRW:	Bill	CHKD	Lord	MATL:	Jimmy	TOLERANCE	Sam	DATE	24.11.2015
APPD:	Louis			FINISH	Georg			Sheet No.	1 from 2

www.edcon-components.com

email: info@edcon-components.com

Copyright by EDCON-COMPONENTS



EDCON-COMPONENTS



Ordering Information

Serie	No. of Pos.	Body Color	Screw Type	Approval Code	ROHS	Packing	EDCON Cust. No.	Customer Version		
-------	-------------	------------	------------	---------------	------	---------	-----------------	------------------	--	--

A14L064	02	PG	A	N	R	B				
----------------	-----------	-----------	----------	----------	----------	----------	--	--	--	--

Pitch 3,50	02= Number of Pos.	PG= Phoenix Green (Standard)	A= Slotted Screw Type (Standard)	N= NON Approval	R= ROHS Conform	B= Bulk-Ware	xxxxxx= Customer Number	xxx= Customer Version ?? Printing
	Standard 2 ~ 24Pos.	WH= White		A= UL /UR Approval Please consult EDCON for available	N= NON ROHS Conform	I= Individual Package		
		GN= Green	B= Cross Slotted Screw Type	B= VDE Approval Please consult EDCON for available				
		GY= Gray						
		LG= Light Gray		C= TÜV Approval Please consult EDCON for available				
		OR= Orange						
		BL= Blue						
		BK= Black						

Pluggable Terminal Block / Pitch 5.00mm

Part No.: A14L064

DRW:	Bill	CHKD	Lord	MATL:	Jimmy	TOLERANCE	Sam	DATE	24.11.2015	Customer:
APPD:	Louis			FINISH	Georg			Sheet No.	2 from 2	