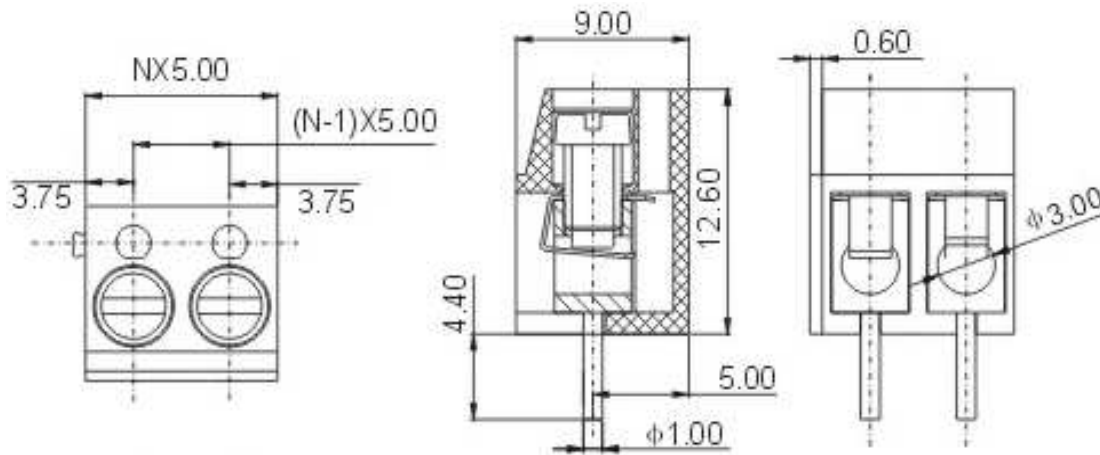
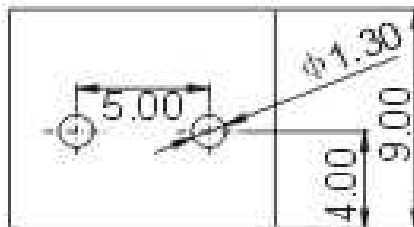






**Drawing**



**P.C.B. Layout**



**Specification**

<b>APPROVAL</b>			
<b>Electrical</b>		UL	IEC
Standard		300V	250V
Rated voltage		10A	24A
Rated current		22-14 AWG	2.5mm <sup>2</sup>
Wire range		AC2000V/1Min	
Withstanding voltage			
<b>Mechanical</b>			
Ambient temperature		-30°C ~ +120°C	
Strip length		5 ~ 6mm	
Screw, Torque		M3, 0.5Nm (4.4Lb-In.)	
<b>Dimensions</b>			
Pitch		5.00mm	
Poles		2P, 3P-24P	
<b>Material</b>			
Housing		PBT (UL94V-0)	
Pin header		Brass, Tin plated	
Screw		steel, Cr <sup>3+</sup> Zn plated	
Wire guard		Stainless steel	



**Certification**



Wire Protector Terminal Block / Pitch 5.00mm	
Part No.:	A12L009
Customer:	

DRW:	Bill	CHKD	Lord	MATL:	Jimmy	TOLERANCE	Sam	DATE	14.03.2009
APPD:	Louis			FINISH	Georg			Sheet No.	1 from 3

# EDCON-COMPONENTS



## Ordering Informations

Serie	-	No. of Pole	Body-Color	wire protector	Screw	-	Customer Request
A12L009	-	XX	XX	X	X	-	X

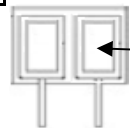
XX = total	WH - white	1 - with wire protector	A - Slotted screw (standard)
	GN - green	2 - without wire protector	B - Cross-slotted screw
	GR - gray		
	LG - light gray		



PG - Phoenix Green
OR - orange
BL - blue
BK - black



wire protector



without wire protector



**Certification**



Wire Protector Terminal Block /  
Pitch 5.00mm

Part No.: A12L009

Customer:

DRW:	Bill	CHKD	Lord	MATL:	Jimmy	TOLERANCE	Sam	DATE	14.03.2009
APPD:	Louis			FINISH	Georg		Sheet No.		2 from 3

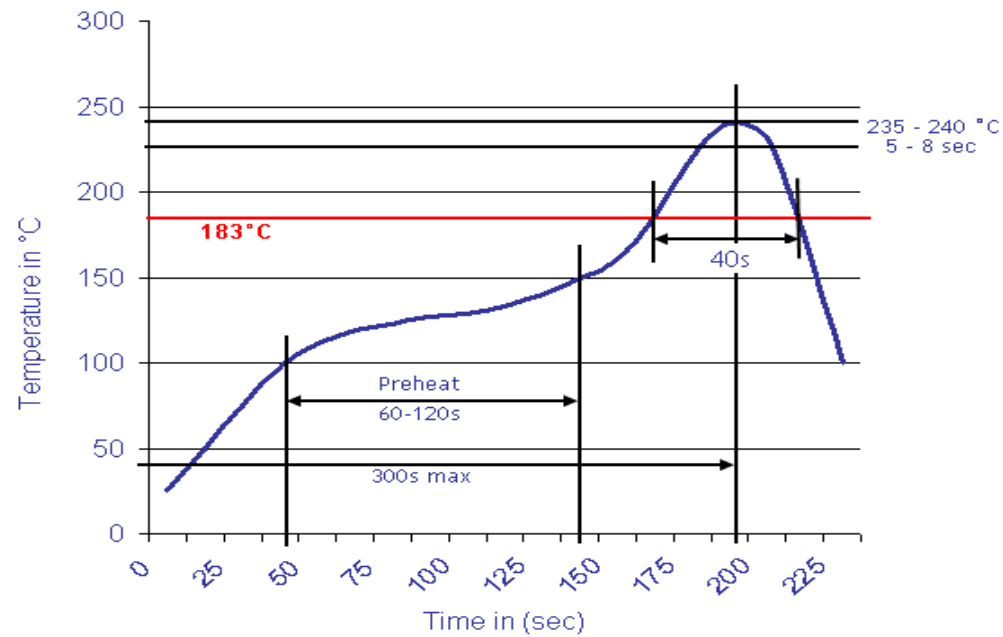
[www.edcon-components.com](http://www.edcon-components.com)

email: [info@edcon-components.com](mailto:info@edcon-components.com)



Soldering - Profil

Classification Reflow Profile (JEDEC J-STD-020C)



Wire Protector Terminal Block /  
Pitch 5.00mm

Part No.: A12L009

Customer:

DRW:	Bill	CHKD	Lord	MATL:	Jimmy	TOLERANCE	Sam	DATE	14.03.2009
APPD:	Louis			FINISH	Georg		Sheet No.	3 from 3	