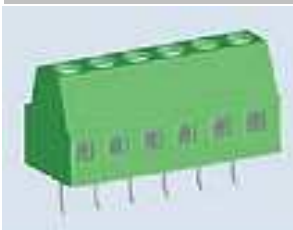


# EDCON-COMPONENTS



## Technical Description

## Drawing (Dimension in mm)

### Electrical

Rated Voltage	150Volt
Rated Current	6A
Wire Range	0,34 ~ 2,5mm <sup>2</sup>
Contact Resistance	20m Ω
Withstanding Voltage	1,3KV
Insulation Resistance	5000MmΩ / 1000V

### Mechanical

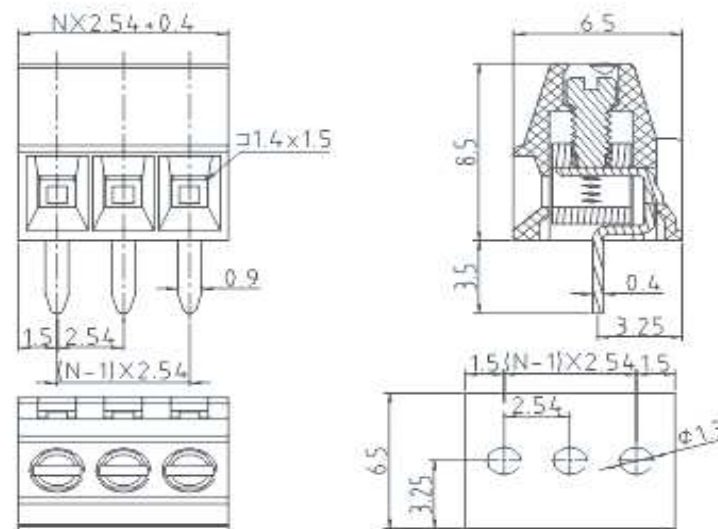
Operating Temperature	-40°C ~ +105°C
Wire Strip Length	4-5mm
Screw Torque	1,3
Screw Size	M1,6

### Dimensions

Pitch	2,54mm
Poles	2 + 3 max 24P.

### Materials

Housing	PA66, UL94V-0
Pin Heder	Brass Tin Plated
Screw	Fe Ni-plated
Cage	Brass Ni Plated

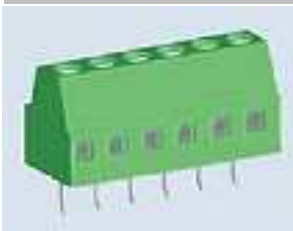


**Terminal Block Pitch  
2,54mm Elevated Type**

Part No.: **A13F001**



DRW:	Jason	CHKD	Wilson	MATL:	Wilson	TOLERANCE	Mason	DATE	03.02.2011
APPD:	Schumi			FINISH	Jamy		Sheet No.	1 from 3	Customer:

# EDCON-COMPONENTS



## Ordering Informations

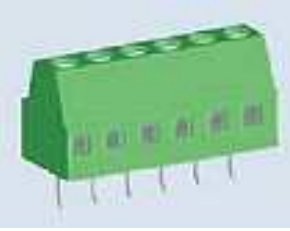
Serie	No. of Pos.	Body Color	Screw Type	Approval Code	ROHS	Packing	EDCON Cust. No.	Customer Version		
<b>A13F001</b>	<b>02</b>	<b>PG</b>	<b>A</b>	<b>N</b>	<b>R</b>	<b>B</b>	<b>xxxxxx</b>	<b>xxx</b>		

<b>02=</b> Number of Pos.	<b>PG=</b> Phoenix Green (Standard)	<b>A=</b> Slotted Screw Type (Standard)	<b>N=</b> NON Approval	<b>R=</b> ROHS Conform	<b>B=</b> Bulk-Ware	<b>xxxxxx=</b> Customer Number	<b>xxx=</b> Customer Version ??(Printing)
Standard 2 +3 Pos.	<b>WH=</b> White	<b>B=</b> Cross Slotted Screw Type	<b>A=</b> UL /UR Approval	<b>N=</b> NON ROHS Conform			
Other Position on Request	<b>GN=</b> Green	<b>Screw Type A</b> 	<b>B=</b> VDE Approval	<b>C=</b> TÜV Approval			
	<b>GN=</b> Gray						
	<b>LG=</b> Light Gray						
	<b>OR=</b> Orange	<b>Screw Type B</b> 					
	<b>BL=</b> Blue						
<b>BK=</b> Black							

**Terminal Block Pitch  
2,54mm Elevated Type**

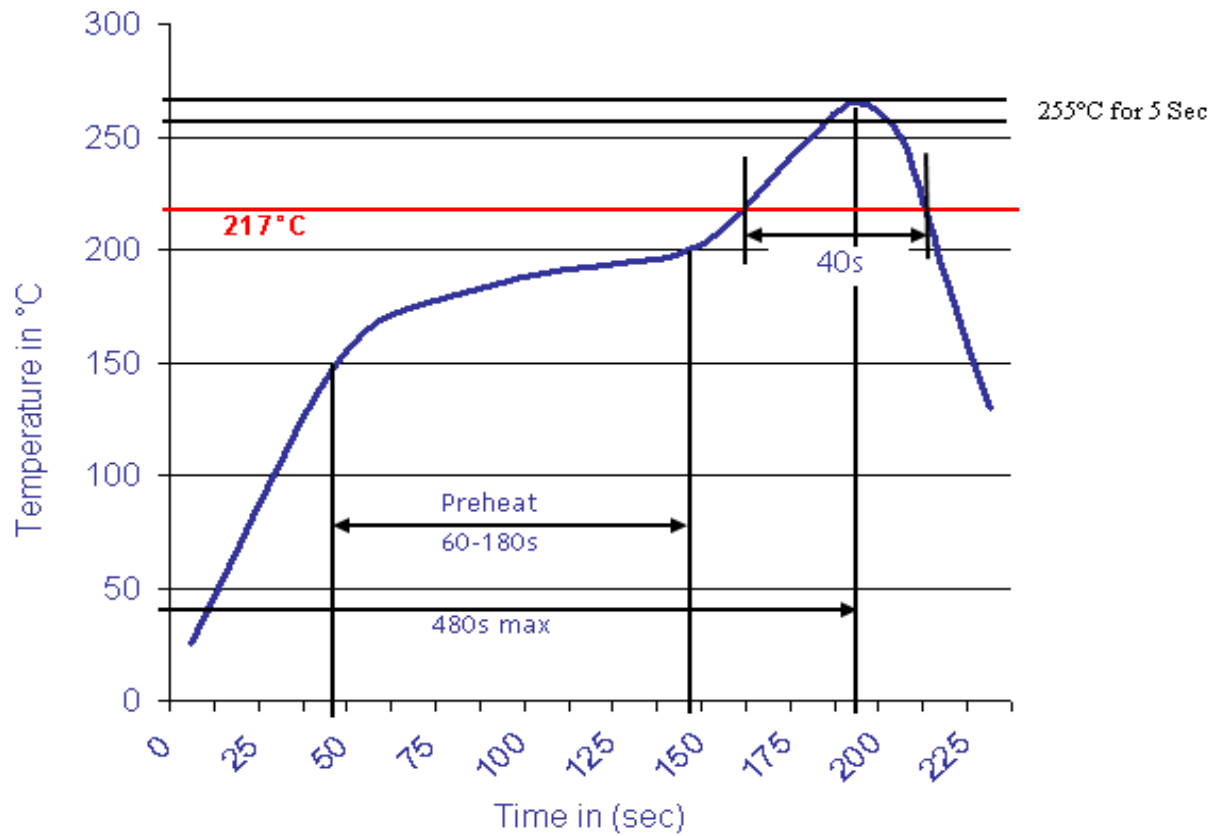
Part No.: **A13F001**

DRW:	Jason	CHKD	Wilson	MATL:	Wilson	TOLERANCE	Mason	DATE	03.02.2011
APPD:	Schumi			FINISH	Jamy		Sheet No.	2 from 3	Customer:



Soldering Profile Curve

Classification Reflow Profile (JEDEC J-STD-020C)



**Terminal Block Pitch  
2,54mm Elevated Type**

Part No.: **A13F001**

DRW:	Jason	CHKD	Wilson	MATL:	Wilson	TOLERANCE	Mason	DATE	03.02.2011
APPD:	Schumi			FINISH	Jamy		Sheet No.	3 from 3	

Customer: