

# EDCON-COMPONENTS



## Specifications

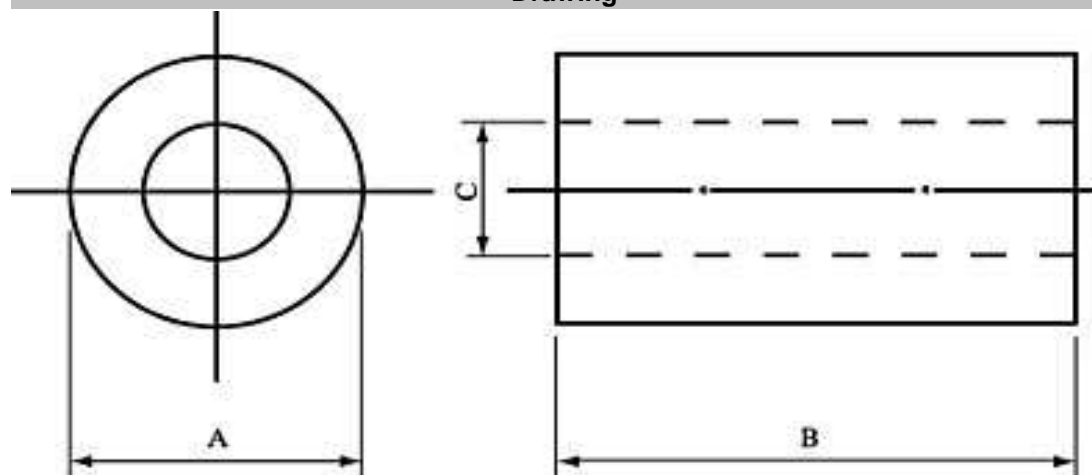
Test Conditions 20°C

Storage Temperature:	-20°C to +60°C
Operating Temperature:	-25°C to +125°C

Dimension of Ferrit	mm	Tol. mm
A	<b>17,5</b>	± 0,40
B	<b>28,5</b>	± 0,60
C	<b>9,5</b>	± 0,50

Material of Core	3 W 800	Unit	Tol.
Material Order Code	A		
Initial Permeability:	800	$\mu_i$	typ.
Curie	140	°C	typ.
Test cable Wire Size	AWG26		

## Drawing



## Electrical Characteristics

Conditions	MHz	Wire Turn	Test Freq.	Unit	Unit	Range	Unit	Tol.
Impedance @	25	1	25	MHz	Z	152	Ω	± 25%
Impedance @	100	1	25	MHz	Z	211	Ω	± 25%
Impedance @	25	2	25	MHz	Z	648	Ω	typ.
Impedance @	100	2	25	MHz	Z	631	Ω	typ.

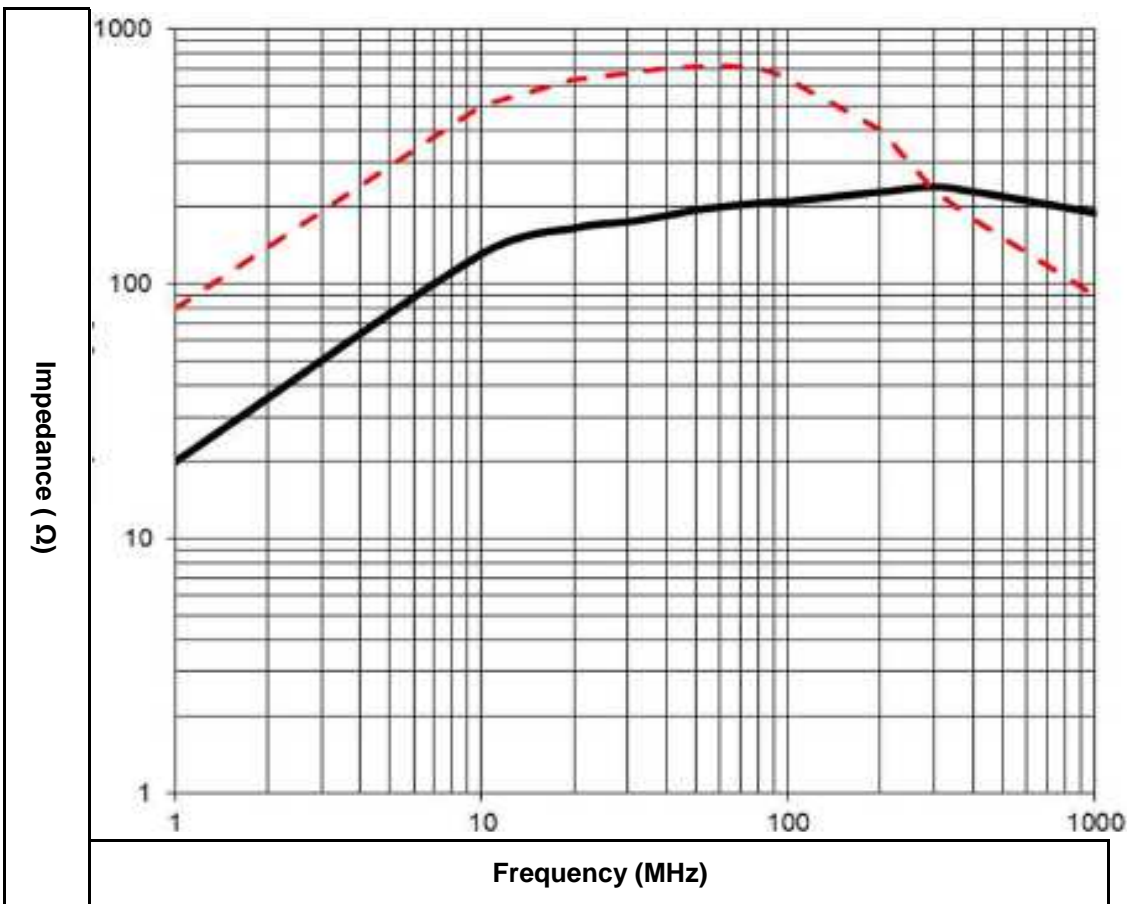
Black Line	1
Red Line	2

<b>RH-Ferrit</b>	
Part No.:	<b>G32175</b>
Customer:	

DRW:	Jason	CHKD	Wilson	MATL:	Wilson	TOLERANCE	Mason	DATE	25.11.2015
APPD:	Schumi			FINISH	Jamy		Sheet No.		1 from 3



Typical Impedance Characteristics



<b>RH-Ferrit</b>	
Part No.:	<b>G32175</b>
Customer:	

DRW:	Jason	CHKD	Wilson	MATL:	Wilson	TOLERANCE	Mason	DATE	25.11.2015
APPD:	Schumi			FINISH	Jamy		Sheet No.	2 from 3	



Ordering Informations

Serie	Material Order Code	ROHS	Packing							
<b>G32175</b>	<b>A</b>	<b>R</b>	<b>TY</b>							

A= Material Code	R= ROHS conform	TY= Tray Packing
	R= NON ROHS conform	IV= Individual Packing
		BU= Bulk-Packing

										<b>RH-Ferrit</b>
										Part No.: <b>G32175</b>
DRW:	Jason	CHKD	Wilson	MATL:	Wilson	TOLERANCE	Mason	DATE	25.11.2015	Customer:
APPD:	Schumi			FINISH	Jamy			Sheet No.	3 from 3	