

EDCON-COMPONENTS



Specifications

Features

Contact Positions: 09 / 25
Right Angle Ultra Low Profile

Materials

Contact Brass and Phosphor Bronze
Housing: PBT +30% Glass Fiber (UL 94V-0)
Shell: cold roller steel

Electrical Characteristics

Current Rating: 2,5Ampere
Withstanding Voltage: AC 1000V r.m.s.
Insulation Resistance: 3000 Megaohms Minimum at DC500V
Contact Resistance: 15 Milliohm Maximum
Operation Temperature: -55°C ~ +105°C

Mechanical Characteristics:

Contact Resistance Force: 341gr. Maximum
Contact Separation Force: 20gr. Minimum

Finishes:

Contact Plating (look Order Code)
Shell Plating (look order code)

Dimensions (mm)

	Male
	9
A	16,92
B	25,00
C	30,80
D	6,95

**D-Sub Connector Right angle
Ultra Low Profile**

Part No.: **T24F600**

DRW:	Jason	CHKD	Wilson	MATL:	Wilson	TOLERANCE	Mason	DATE	10.04.2009	Customer:
APPD:	Schumi			FINISH	Jamy		Sheet No.	1 from 5		

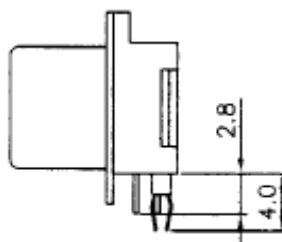
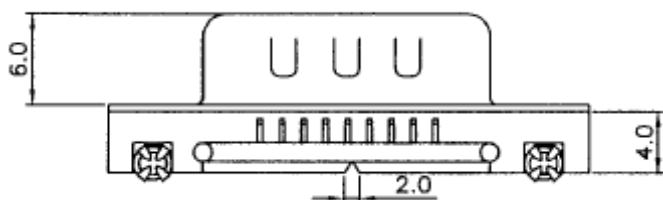
www.edcon-components.com

email: info@edcon-components.com

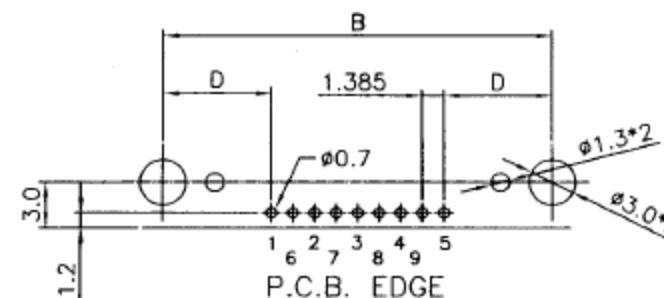
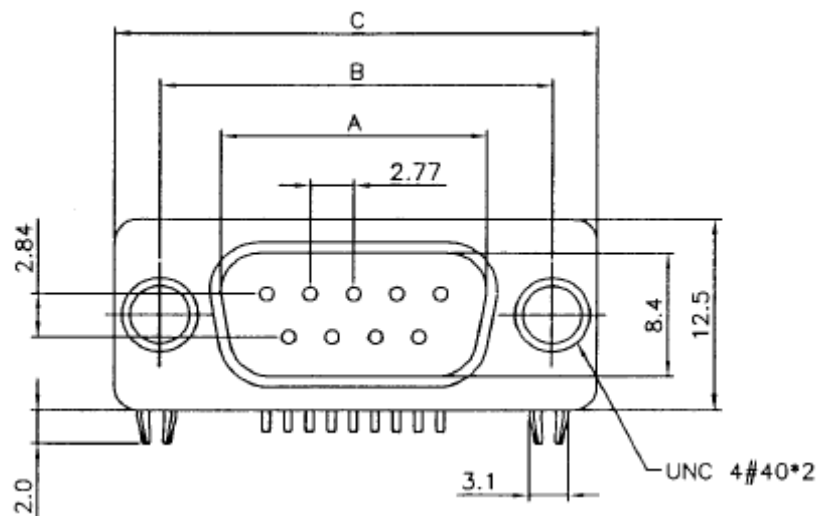
EDCON-COMPONENTS



Male Contact



P.C.B. Layout



RECOMMENDED P.C.B LAYOUT (TOP VIEW)
TOLERANCES: $\pm 0.10\text{mm}$

**D-Sub Connector Right angle
Ultra Low Profile**

Part No.: **T24F600**

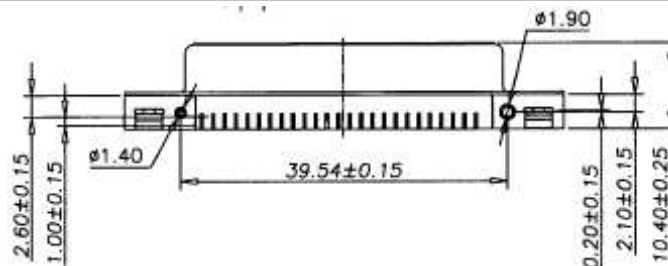
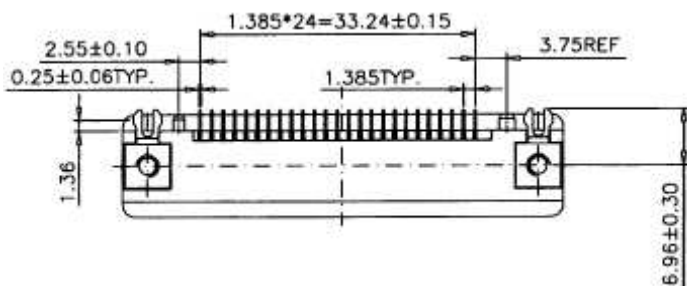
DRW:	Jason	CHKD	Wilson	MATL:	Wilson	TOLERANCE	Mason	DATE	10.04.2009
APPD:	Schumi			FINISH	Jamy		Sheet No.	2 from 5	

Customer:

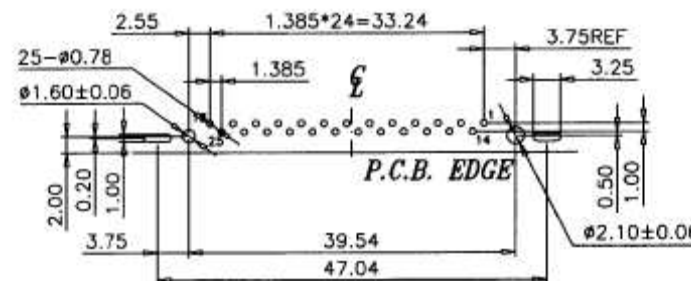
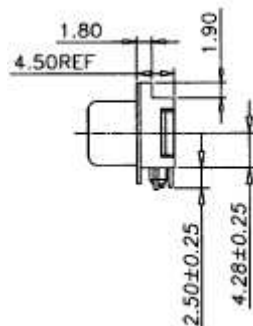
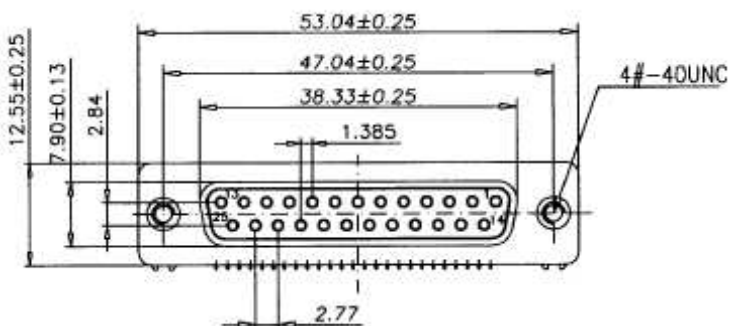
EDCON-COMPONENTS



Femle Contact



P.C.B. Layout



RECOMMENDED P.C.B LAYOUT
TOLERANCES: ±0.05mm

**D-Sub Connector Right angle
Ultra Low Profile**

Part No.: **T24F600**

DRW:	Jason	CHKD	Wilson	MATL:	Wilson	TOLERANCE	Mason	DATE	10.04.2009
APPD:	Schumi			FINISH	Jamy		Sheet No.		3 from 5

Customer:

EDCON-COMPONENTS



Ordering Informations

Serie	No. of contacts.	Contact Type	Shell Finish	PCB Options	Screw	Screw Type	Contact Plating	Plastic Color	ROHS	Packing
-------	------------------	--------------	--------------	-------------	-------	------------	-----------------	---------------	------	---------

T24F600	09	M	T	B	1	A	SF	BK	R	TY
----------------	-----------	----------	----------	----------	----------	----------	-----------	-----------	----------	-----------

09= Contacts	M= 9P Male	T= Tin	B= w. Boardlock	1= without mounting screw	A= UNC4-40	SF= Selective Gold flash	BK= Black	R= ROHS Conform N= NON ROHS Conform	TY= Tray Packing BU= Bulk-Ware
09 / 25 contacts	F= 25P Female	N= Nickel		2= Mounted screw		SA= 5µ Selective Gold flash			
				3= added screw separetly		SB= 10µ Selective Gold flash SC= 15µ Selective Gold flash SD= 30µ Selective Gold flash			

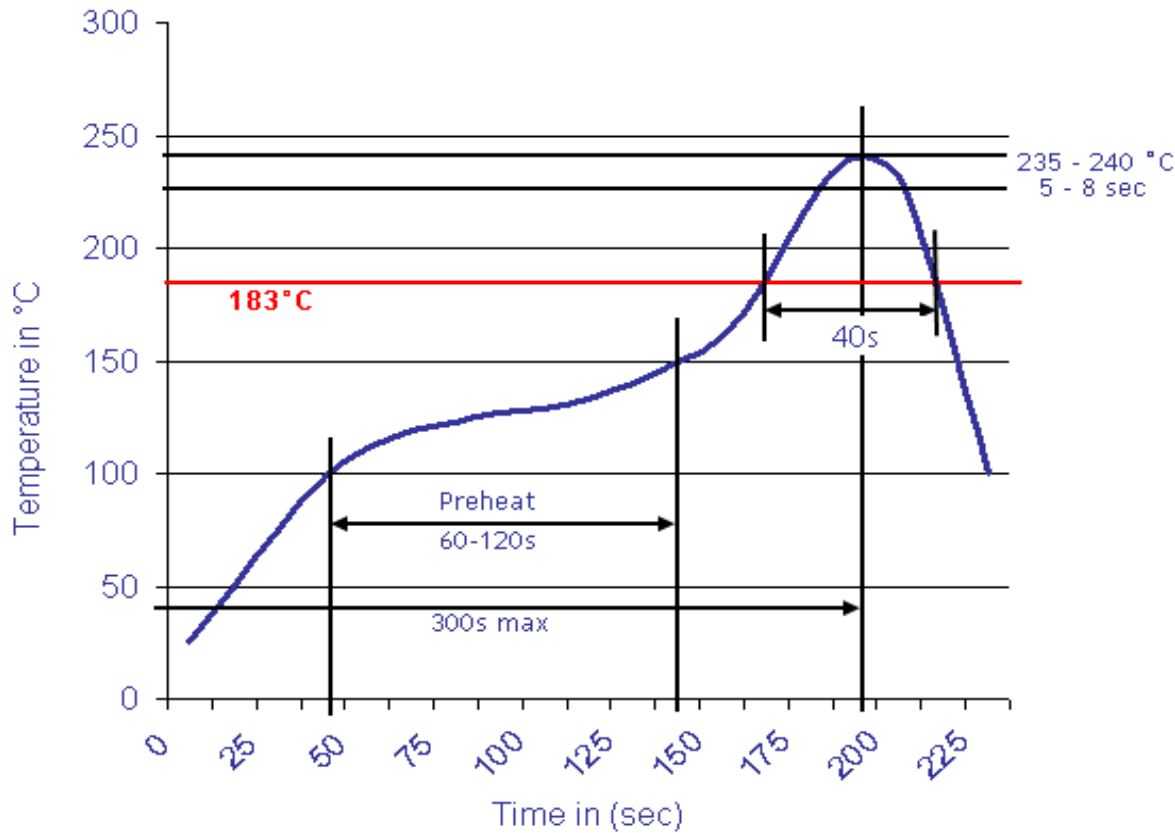
D-Sub Connector Right angle Ultra Low Profile	
Part No.:	T24F600
Customer:	

DRW:	Jason	CHKD	Wilson	MATL:	Wilson	TOLERANCE	Mason	DATE	10.04.2009
APPD:	Schumi			FINISH	Jamy		Sheet No.		4 from 5



Soldering Profile Curve

Classification Reflow Profile (JEDEC J-STD-020C)



**D-Sub Connector Right angle
 Ultra Low Profile**

Part No.: **T24F600**

DRW:	Jason	CHKD	Wilson	MATL:	Wilson	TOLERANCE	Mason	DATE	10.04.2009
APPD:	Schumi			FINISH	Jamy		Sheet No.	5 from 5	

Customer: