

# EDCON-COMPONENTS



## Specifications

### Features

Contact Positions: 09, 15, 25, 37  
Press Fit Contact

### Materials

Contact Brass and Phosphor Bronze  
Housing: PBT +30% Glass Fiber (UL 94V-0)  
Shell: cold roller steel

### Electrical Characteristics

Current Rating: 2,5Ampere  
Withstanding Voltage: AC 1000V r.m.s.  
Insulation Resistance: 3000 Megaohms Minimum at DC500V  
Contact Resistance: 15 Milliohm Maximum  
Operation Temperature: -55°C ~ +105°C

### Mechanical Characteristics:

Contact Resistance Force: 341gr. Maximum  
Contact Separation Force: 20gr. Minimum

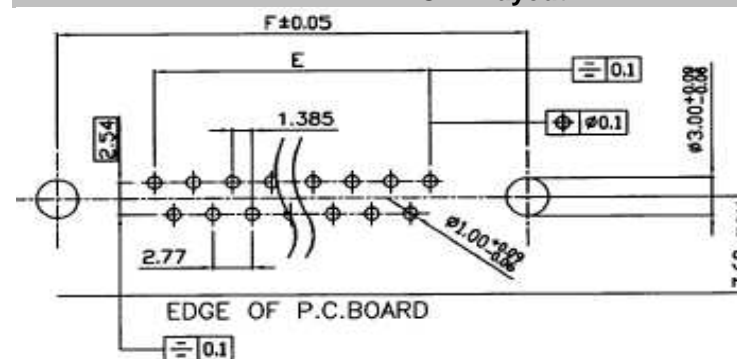
### Finishes:

Contact Plating ( look Order Code)  
Shell Plating ( look order code)

## Dimensions (mm)

Pos.	Male Contact			
	9	15	25	37
A	16,92	25,25	38,96	55,42
B	25,00	33,30	47,,04	63,50
C	31,00	39,30	53,10	69,50
E	11,08	19,39	33,24	49,86
F	25,00	33,30	47,04	63,50

## P.C.B. Layout



**D-Sub Connector Right angle  
PRESSFIT**

Part No.: **T24F300**

DRW:	Jason	CHKD	Wilson	MATL:	Wilson	TOLERANCE	Mason	DATE	10.04.2009	Customer:
APPD:	Schumi			FINISH	Jamy		Sheet No.	1 from 4		

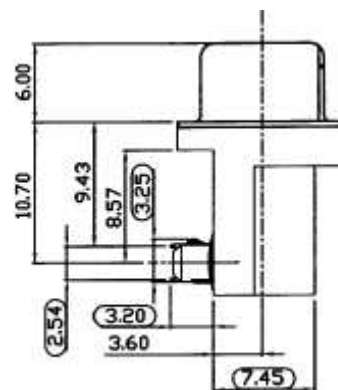
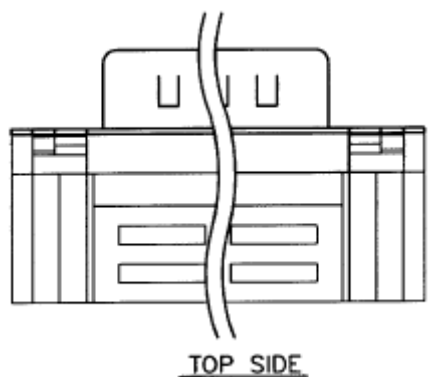
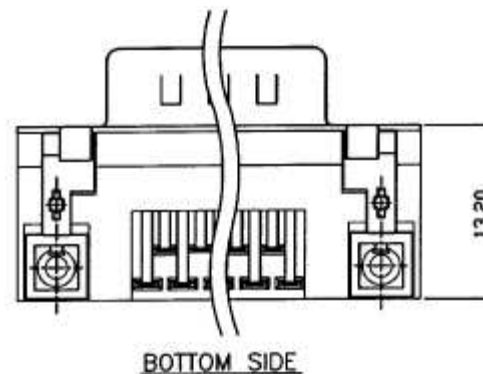
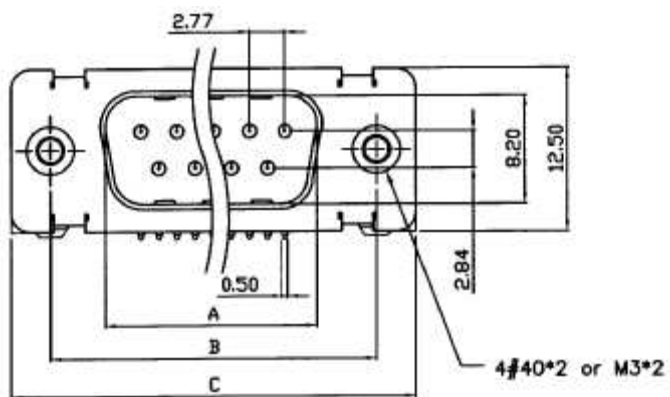
[www.edcon-components.com](http://www.edcon-components.com)

email: [info@edcon-components.com](mailto:info@edcon-components.com)

# EDCON-COMPONENTS



## Male Contact



**D-Sub Connector Right angle  
PRESSFIT**

Part No.: **T24F300**

DRW:	Jason	CHKD	Wilson	MATL:	Wilson	TOLERANCE	Mason	DATE	10.04.2009	Customer:
APPD:	Schumi			FINISH	Jamy			Sheet No.	2 from 4	

[www.edcon-components.com](http://www.edcon-components.com)

email: [info@edcon-components.com](mailto:info@edcon-components.com)

# EDCON-COMPONENTS



## Ordering Informations

Serie	No. of contacts.	Contact Type	Shell Finish	PCB Options	Screw	Screw Type	Contact Plating	Plastic Color	ROHS	Packing
<b>T24F300</b>	<b>09</b>	<b>M</b>	<b>T</b>	<b>B</b>	<b>1</b>	<b>A</b>	<b>SF</b>	<b>BK</b>	<b>R</b>	<b>TY</b>

<b>09=</b> Contacts	<b>M=</b> Male	<b>T=</b> Tin	<b>B=</b> Rivet w. Boardlock	<b>1=</b> without mounting screw	<b>A=</b> UNC4-40	<b>SF=</b> Selective Gold flash	<b>BK=</b> Black	<b>R=</b> ROHS Conform <b>N=</b> NON ROHS Conform	<b>TY=</b> Tray Packing
<b>09 ~ 37</b> contacts				<b>2=</b> Mounted screw	<b>B=</b> M3	<b>SA=</b> 5µ Selective Gold flash			<b>BU=</b> Bulk-Ware
				<b>3=</b> added screw separetly		<b>SB=</b> 10µ Selective Gold flash			
						<b>SC=</b> 15µ Selective Gold flash			
						<b>SD=</b> 30µ Selective Gold flash			

<b>D-Sub Connector Right angle PRESSFIT</b>	
Part No.:	<b>T24F300</b>
Customer:	

DRW:	Jason	CHKD	Wilson	MATL:	Wilson	TOLERANCE	Mason	DATE	10.04.2009
APPD:	Schumi			FINISH	Jamy		Sheet No.		3 from 4



Soldering Profile Curve

Classification Reflow Profile (JEDEC J-STD-020C)



<b>D-Sub Connector Right angle PRESSFIT</b>	
Part No.:	<b>T24F300</b>
Customer:	

DRW:	Jason	CHKD	Wilson	MATL:	Wilson	TOLERANCE	Mason	DATE	10.04.2009
APPD:	Schumi			FINISH	Jamy		Sheet No.	4 from 4	