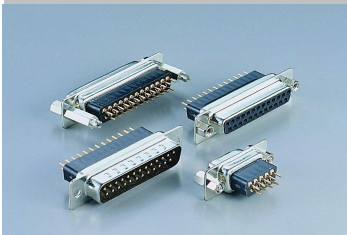


EDCON-COMPONENTS



Specifications

Features

Contact Positions: 09, 15, 25, 37
High Profile Body (Stamped Pin)

Materials

Contact Brass and Phosphor Bronze
Housing: PBT +30% Glass Fiber (UL 94V-0)
Shell: cold roller steel

Electrical Characteristics

Current Rating: 2,5Ampere
Withstanding Voltage: AC 1000V r.m.s.
Insulation Resistance: 3000 Megaohms Minimum at DC500V
Contact Resistance: 15 Milliohm Maximum
Operation Temperature: -55°C ~ +105°C

Mechanical Characteristics:

Contact Resistance Force: 341gr. Maximum
Contact Separation Force: 20gr. Minimum

Finishes:

Contact Plating (look Order Code)
Shell Plating (look order code)

Dimensions (mm)

Male Contact

Pos.	9	15	25	37	
A	16,92	25,25	38,96	55,42	
B	25,00	33,30	47,10	63,50	
C	30,80	39,20	53,10	69,40	
D	19,20	27,70	41,10	57,30	

Female Contact

Pos.	9	15	25	37	
A	16,30	24,60	38,30	54,80	
B	25,00	33,30	47,10	63,50	
C	30,80	39,20	53,10	69,40	
D	19,20	27,70	41,10	57,30	
E	11,08	19,39	33,24	49,86	
F	8,31	16,62	30,47	47,09	

D-Sub Connector Straight High Profile (Stamped Contact)

Part No.: **T24D900**

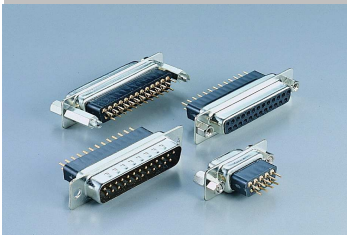
Customer:

DRW:	Jason	CHKD	Wilson	MATL:	Wilson	TOLERANCE	Mason	DATE	10.04.2009
APPD:	Schumi			FINISH	Jamy		Sheet No.		1 from 5

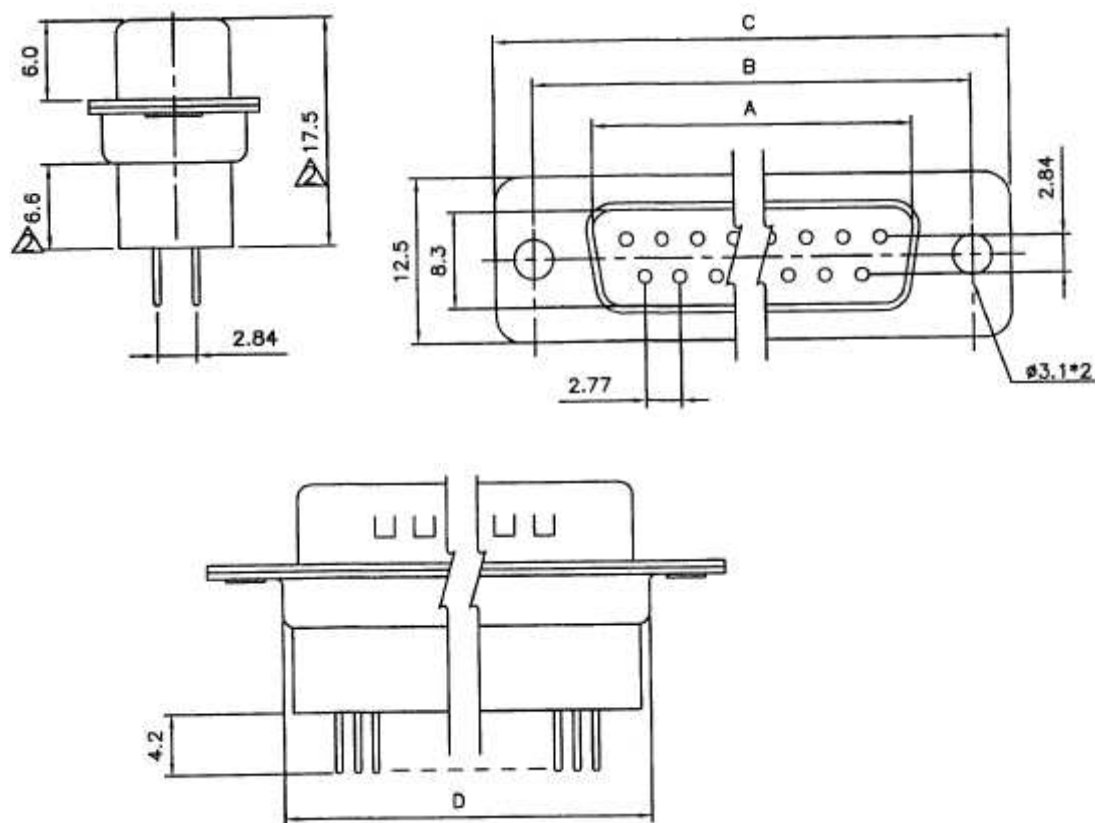
www.edcon-components.com

email: info@edcon-components.com

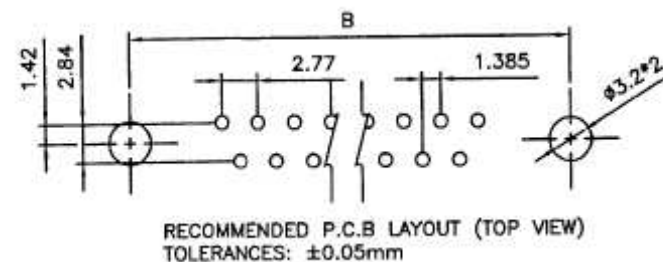
EDCON-COMPONENTS



Male Contact



P.C.B. Layout



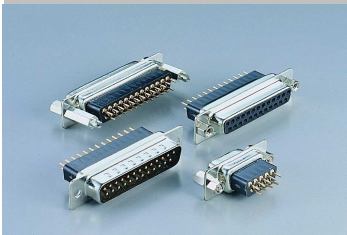
D-Sub Connector Straight High Profile (Stamped Contact)

Part No.: **T24D900**

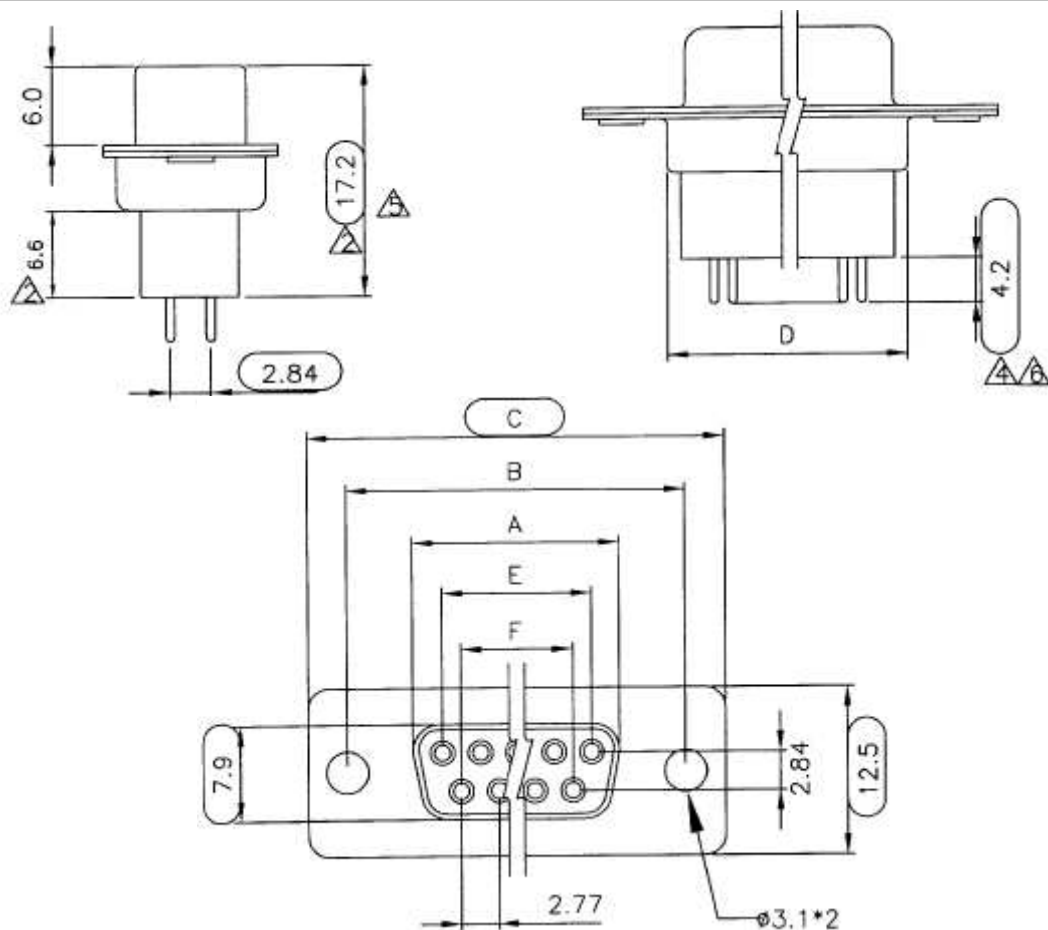
DRW:	Jason	CHKD	Wilson	MATL:	Wilson	TOLERANCE	Mason	DATE	10.04.2009
APPD:	Schumi			FINISH	Jamy		Sheet No.	2 from 5	

Customer:

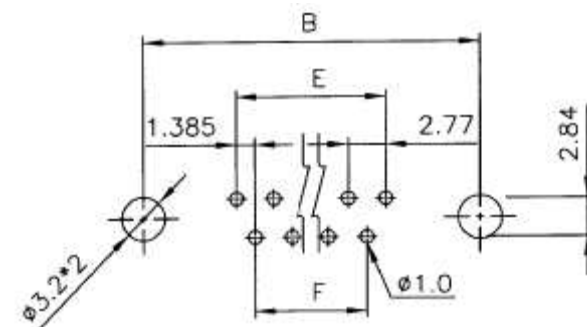
EDCON-COMPONENTS



Female Contact



P.C.B. Layout



RECOMMENDED P.C.B LAYOUT(TOP VIEW)
TOLERANCES: $\pm 0.05\text{mm}$

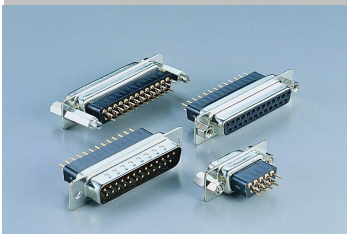
D-Sub Connector Straight High Profile (Stamped Contact)

Part No.: **T24D900**

Customer:

DRW:	Jason	CHKD	Wilson	MATL:	Wilson	TOLERANCE	Mason	DATE	10.04.2009
APPD:	Schumi			FINISH	Jamy		Sheet No.		3 from 5

EDCON-COMPONENTS



Ordering Informations

Serie	No. of contacts.	Contact Type	Shell Finish	PCB Options	Frontside Screw	Option 1	Contact Plating	Plastic Color	ROHS	Packing
T24D900	09	M	T	A	1	0	SF	BK	R	TY

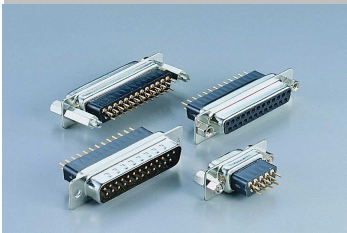
09= Contacts	M= Male	T= Tin	A= Trough Hole	1= without mounting screw		SF= Selective Gold flash	BK= Black	R= ROHS Conform N= NON ROHS Conform	TY= Tray Packing BU= Bulk-Ware
09 ~ 37 contacts	F= Female	N= Nickel	B= Front side Rivet + hex nut	2= Mounted screw		SA= 5µ Selective Gold flash			
			C= Rear side hex rivet 3,8mm	3= added screw separetly		SB= 10µ Selective Gold flash			
			D= Rear side hex rivet 5,8mm			SC= 15µ Selective Gold flash			
			E= Rear side hex boardlock rivet 6,0mm			SD= 30µ Selective Gold flash			

D-Sub Connector Straight High Profile (Stamped Contact)

Part No.: **T24D900**

DRW:	Jason	CHKD	Wilson	MATL:	Wilson	TOLERANCE	Mason	DATE	10.04.2009
APPD:	Schumi			FINISH	Jamy		Sheet No.		4 from 5

Customer:



Soldering Profile Curve

Classification Reflow Profile (JEDEC J-STD-020C)



D-Sub Connector Straight High Profile (Stamped Contact)

Part No.: **T24D900**

DRW:	Jason	CHKD	Wilson	MATL:	Wilson	TOLERANCE	Mason	DATE	10.04.2009
APPD:	Schumi			FINISH	Jamy		Sheet No.	5 from 5	Customer: