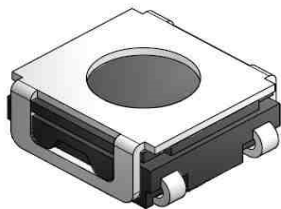


# EDCON-COMPONENTS



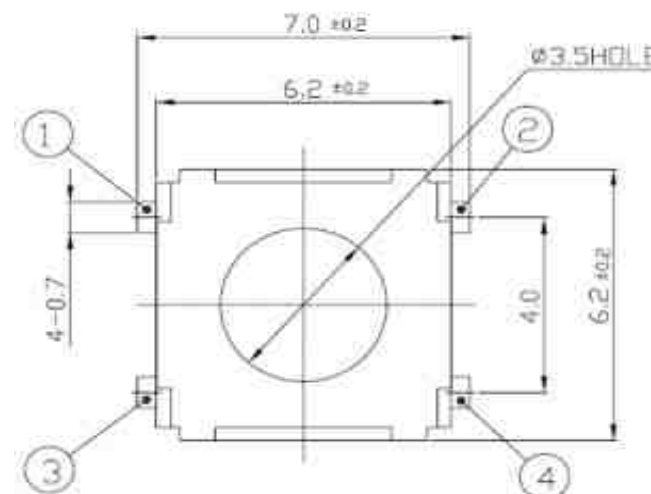
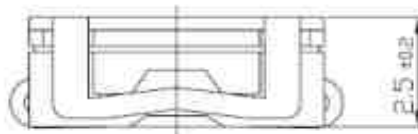
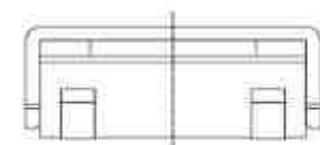
## SPECIFICATION:

|                        |                        |
|------------------------|------------------------|
| Current Rating:        | DC12V / 50mA           |
| Insulator Resistance:  | 100 Mega $\Omega$ min. |
| Contact Resistance:    | 100 m $\Omega$ max.    |
| Travel:                | 0,25 / +/- 0,1mm       |
| Operating Temperature: | -.40°C to +105°C       |
| Lifetime:              | look order code        |
| Operating Force:       | look order code        |

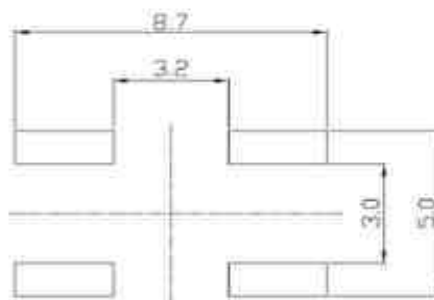
## Common Specifications

|                     |  |
|---------------------|--|
| Life Test           | 50/80 Cycles / Min with 5VDC 5mA<br>Resistive load Cycles of Operation:<br>As per individual Specifications  |
| Dry Heat Proof      | 80°C +/- 2°C for 96hours after Test<br>Kept in Normal Condition for<br>30Min.  |
| Moisture Resistance | 60°C +/- 2°C 90~95% RH for 96<br>Hours After Test, Kept in Normal<br>Condition for 30 Minutes  |
| Cold Proof          | -.30°C for 96 Hours After Test Kept<br>in Normal Condition for 30<br>Minutes.  |
| Operating Force     | If refers to the maximum load at<br>the time of switching over of the<br>contacts. (Point A in the figure)   |
| Travel              | This refers to the state of repeating<br>the contact opening or closing<br>momentarily at the time of the<br>changeover of the switch to ON or<br>OFF. Longer duration of this state |

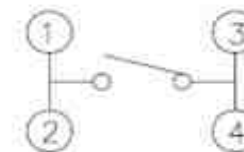
## Drawing



## PCB Layout



## Circuit Diagram



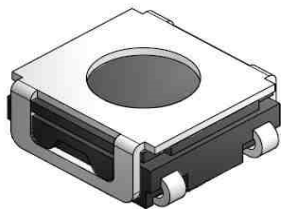
## SMT TACT SWITCH

Part No.: **Q12048**

Customer:

|       |        |      |        |        |        |           |           |          |            |
|-------|--------|------|--------|--------|--------|-----------|-----------|----------|------------|
| DRW:  | Jason  | CHKD | Wilson | MATL:  | Wilson | TOLERANCE | Mason     | DATE     | 02.07.2009 |
| APPD: | Schumi |      |        | FINISH | Jamy   |           | Sheet No. | 1 from 3 |            |

# EDCON-COMPONENTS



## Ordering Informations

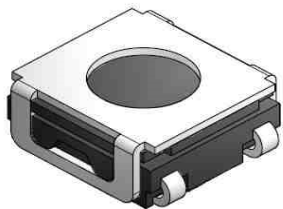
| Serie         | Total height | Function       | Operating Force | Function       | Electrical life                     | Function       | ROHS            | Packing             |  |  |
|---------------|--------------|----------------|-----------------|----------------|-------------------------------------|----------------|-----------------|---------------------|--|--|
| <b>Q12048</b> | <b>025</b>   | <b>N</b>       | <b>161</b>      | <b>N</b>       | <b>803</b>                          | <b>N</b>       | <b>R</b>        | <b>TU65</b>         |  |  |
|               | 025= 2,5mm   | N= No function | 161 = 160gr     | N= No function | 803= 80000 cycles by 160gr. O-Force | N= No function | N= non ROHS     | TU65= Tupe w. 65PCS |  |  |
|               |              |                | 201 = 200gr     |                | 803= 80000 cycles by 200gr. O-Force |                | R= ROHS conform | BU50= Bulk 500PCS   |  |  |
|               |              |                | 301 = 300gr     |                | 503= 50000 cycles by 300gr. O-Force |                |                 |                     |  |  |

**SMT TACT SWITCH**

Part No.: **Q12048**

|       |        |      |        |        |        |           |           |          |            |
|-------|--------|------|--------|--------|--------|-----------|-----------|----------|------------|
| DRW:  | Jason  | CHKD | Wilson | MATL:  | Wilson | TOLERANCE | Mason     | DATE     | 02.07.2009 |
| APPD: | Schumi |      |        | FINISH | Jamy   |           | Sheet No. | 2 from 3 |            |

Customer:



**Soldering Profile for Lead Free Soldering**

Classification Reflow Profile (JEDEC J-STD-020C)



**SMT TACT SWITCH**

Part No.: **Q12048**

Customer:

|       |        |      |        |        |        |           |           |          |            |
|-------|--------|------|--------|--------|--------|-----------|-----------|----------|------------|
| DRW:  | Jason  | CHKD | Wilson | MATL:  | Wilson | TOLERANCE | Mason     | DATE     | 02.07.2009 |
| APPD: | Schumi |      |        | FINISH | Jamy   |           | Sheet No. | 3 from 3 |            |