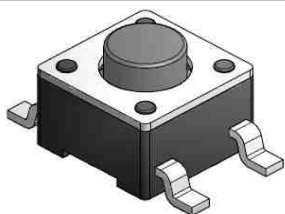


EDCON-COMPONENTS



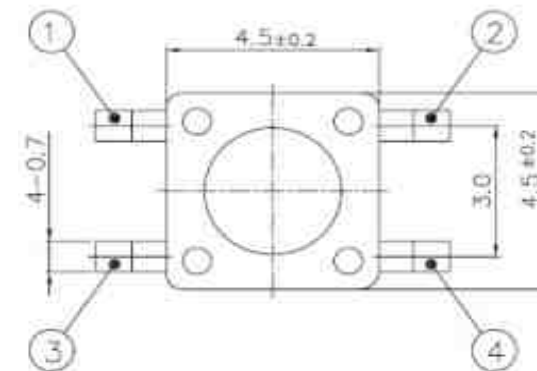
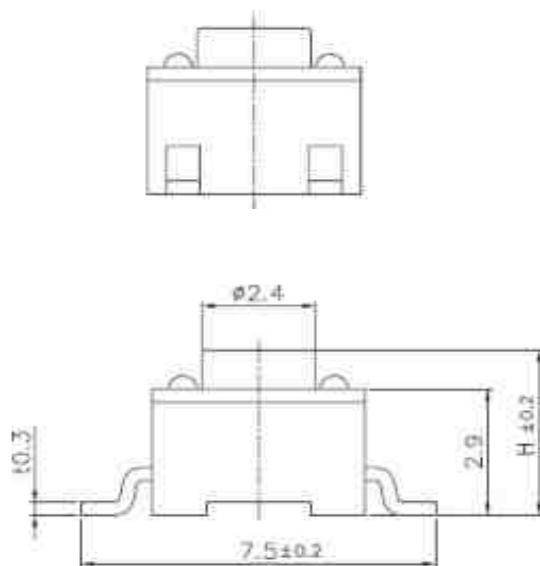
SPECIFICATION:

Current Rating:	DC12V / 50mA
Insulator Resistance:	100 Mega Ω min.
Contact Resistance:	100 m Ω max.
Travel:	0,25 / +/- 0,1mm
Operating Temperature:	-.40°C to +105°C
Lifetime:	look order code
Operating Force:	look order code

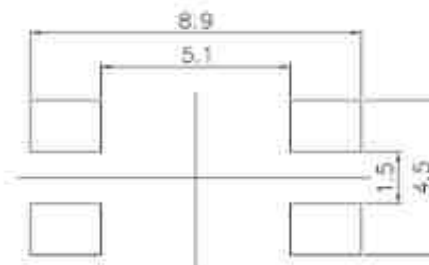
Common Specifications

Life Test	50/80 Cycles / Min with 5VDC 5mA Resistive load Cycles of Operation: As per individual Specifications
Dry Heat Proof	80°C +/- 2°C for 96hours after Test Kept in Normal Condition for 30Min.
Moisture Resistance	60°C +/- 2°C 90~95% RH for 96 Hours After Test, Kept in Normal Condition for 30 Minutes
Cold Proof	. 30°C for 96 Hours After Test Kept in Normal Condition for 30 Minutes.
Operating Force	If refers to the maximum load at the time of switching over of the contacts. (Point A in the figure)
Travel	This refers to the state of repeating the contact opening or closing momentarily at the time of the changeover of the switch to ON or OFF. Longer duration of this state

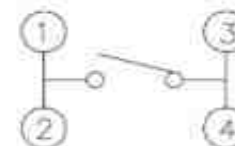
Drawing



PCB Layout



Circuit Diagram



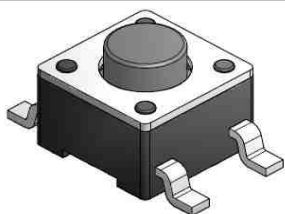
SMT TACT SWITCH

Part No.: **Q12045**

Customer:

DRW:	Jason	CHKD	Wilson	MATL:	Wilson	TOLERANCE	Mason	DATE	21.10.2016
APPD:	Schumi			FINISH	Jamy		Sheet No.		1 from 3

EDCON-COMPONENTS

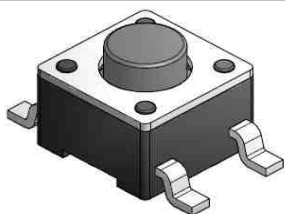


Ordering Informations

Serie	Total length	Function	Operating Force	Function	Electrical life	Function	ROHS	Packing		
Q12045	038	N	101	N	105	N	R	TR		
	038= 3,8mm	N= No function	101 = 100gr	N= No function	105= 1000000 cycles by 100gr. O-Force	N= No function	N= non ROHS	TR= Tape / Reel		
	040= 4,0mm		131 = 130gr		504= 500000 cycles by 130gr. O-Force		R= ROHS conform			
	043= 4,3mm		161 = 160gr		104= 100000 cycles by 160gr. O-Force					
	045= 4,5mm		251 = 250gr		104= 100000 cycles by 250gr. O-Force					
	048= 4,8mm									
	050= 5,0mm									
	055= 5,5mm									
	060= 6,0mm									
	065= 6,5mm									
	070= 7,0mm									
	075= 7,5mm									
	080= 8,0mm									
	085= 8,5mm									
	090= 9,0mm									
	100= 10,0mm									
	110= 11,0mm									
	120= 12,0mm									

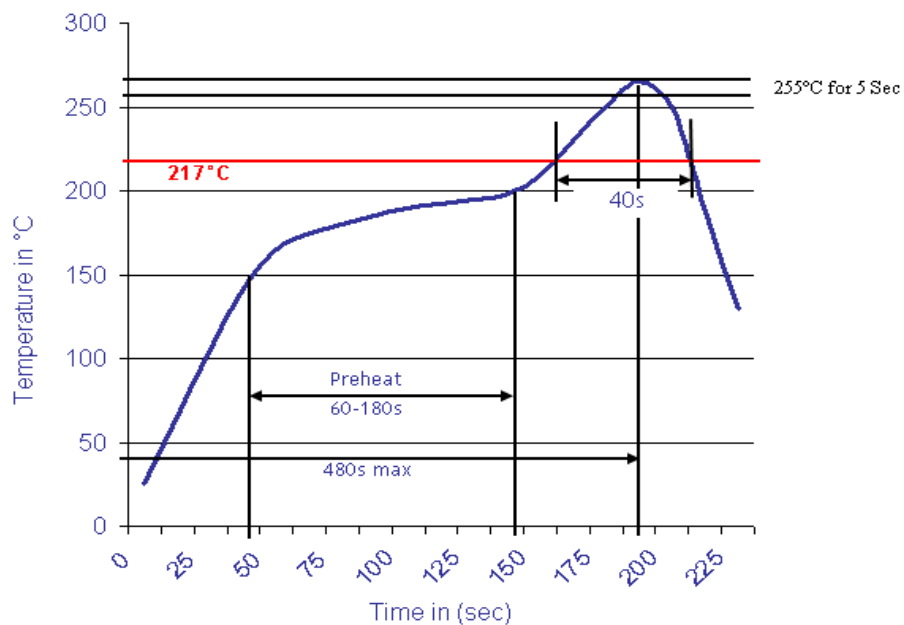
SMT TACT SWITCH	
Part No.:	Q12045
Customer:	

DRW:	Jason	CHKD	Wilson	MATL:	Wilson	TOLERANCE	Mason	DATE	21.10.2016
APPD:	Schumi			FINISH	Jamy		Sheet No.		2 from 3



Soldering Profile for Lead Free Soldering

Classification Reflow Profile (JEDEC J-STD-020C)



SMT TACT SWITCH

Part No.: **Q12045**

Customer:

DRW:	Jason	CHKD	Wilson	MATL:	Wilson	TOLERANCE	Mason	DATE	21.10.2016
APPD:	Schumi			FINISH	Jamy		Sheet No.	3 from 3	