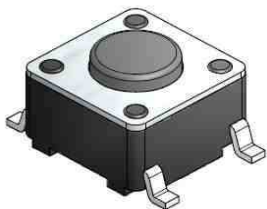


EDCON-COMPONENTS



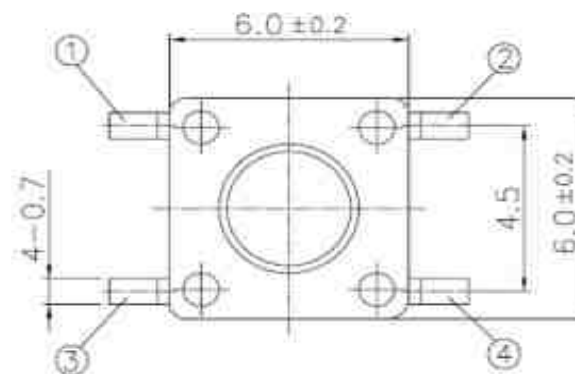
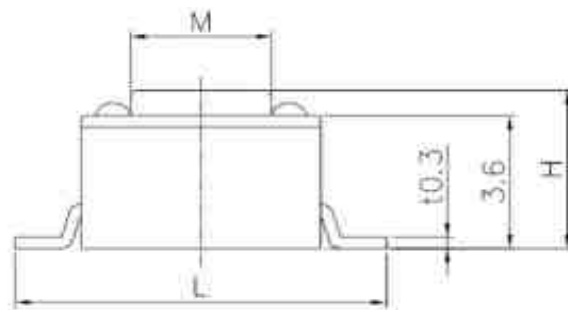
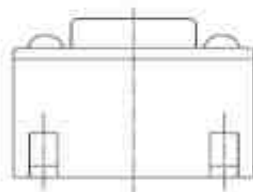
SPECIFICATION:

Current Rating:	DC12V / 50mA
Insulator Resistance:	100 Mega Ω min.
Contact Resistance:	100 m Ω max.
Travel:	0,25 / +/- 0,1mm
Operating Temperature:	.-40°C to +105°C
Lifetime:	look order code
Operating Force:	look order code

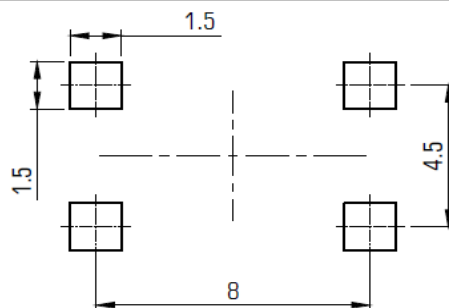
Common Specifications

Life Test	50/80 Cycles / Min with 5VDC 5mA Resistive load Cycles of Operation: As per individual Specifications
Dry Heat Proof	80°C +/- 2°C for 96hours after Test Kept in Normal Condition for 30Min.
Moisture Resistance	60°C +/- 2°C 90~95% RH for 96 Hours After Test, Kept in Normal Condition for 30 Minutes
Cold Proof	. 30°C for 96 Hours After Test Kept in Normal Condition for 30 Minutes.
Operating Force	If refers to the maximum load at the time of switching over of the contacts. (Point A in the figure)
Travel	This refers to the state of repeating the contact opening or closing momentarily at the time of the changeover of the switch to ON or OFF. Longer duration of

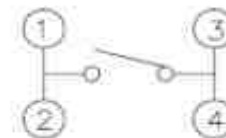
Drawing



PCB Layout



Circuit Diagramm



SMT TACT SWITCH 6x6mm

Part No.: **Q12034**

Customer:

DRW:	Jason	CHKD	Wilson	MATL:	Wilson	TOLERANCE	Mason	DATE	01.03.2016
APPD:	Schumi			FINISH	Jamy		Sheet No.		1 from 4

EDCON-COMPONENTS

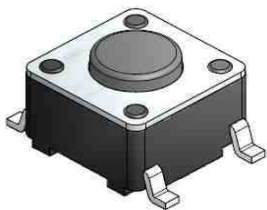
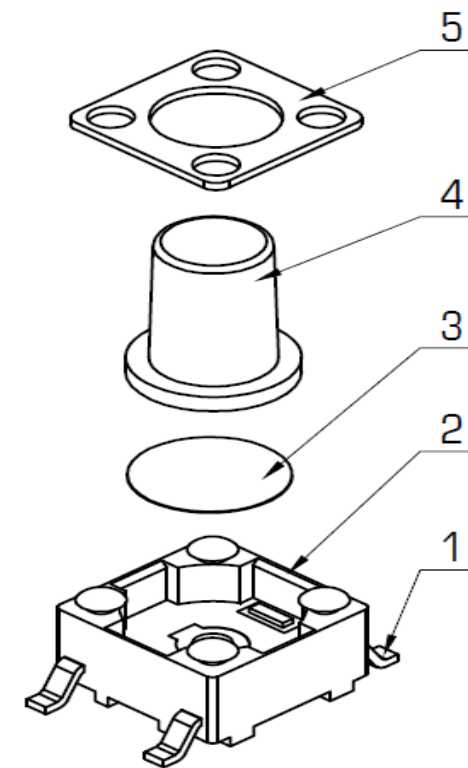


Table 1			Diameter Code
H-Code	Length (mm)	M (mm)	
043	4,3	3,4	X
045	4,5	3,4	X
048	4,8	3,4	X
050	5,0	3,5	X
055	5,5	3,2	X
060	6,0	3,2	X
064	6,4	3,0	X
065	6,5	3,2	X
066	6,6	3,1	X
070	7,0	3,2	X
073	7,3	3,2	X
073	7,3	3,3	1
075	7,5	3,2	X
080	8,0	3,4	X
080	8,0	3,2	1
085	8,5	3,2	X
088	8,8	3,1	X
090	9,0	3,1	X
095	9,5	3,2	X
095	9,5	3,3	1
097	9,7	2,8	X
097	9,7	3,1	1
099	9,9	3,2	X
100	10,0	3,2	X
103	10,3	3,2	X
105	10,5	3,0	X

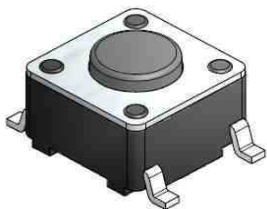
Table 1			Diameter Code
H-Code	Length (mm)	M (mm)	
108	10,8	3,05	X
110	11,0	3,1	X
115	11,5	3,2	X
120	12,0	3,2	X
125	12,5	3,1	X
125	12,5	3,3	1
130	13,0	3,2	X
130	13,0	2,8	1
135	13,5	2,8	X
131	13,0	3,3	X
163	16,3	2,8	X
170	17,0	2,8	X
181	18,1	3,0	X



SMT TACT SWITCH	
Part No.:	Q12034
Customer:	

DRW:	Jason	CHKD	Wilson	MATL:	Wilson	TOLERANCE	Mason	DATE	02.07.2009	Customer:
APPD:	Schumi			FINISH	Jamy			Sheet No.	2 from 4	

EDCON-COMPONENTS

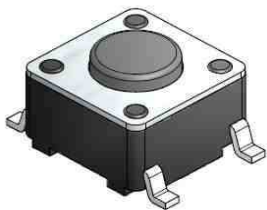


Ordering Informations

Serie	Total length look Table 1	Lead Length (L)	Operating Force	Diameter Code	Electrical life	Function	ROHS	Packing		
Q12034	043	A	101	x	803	N	R	TR		
	xxx= Look H Code table	A= L= 8,0mm	101 = 100gr	X= Look Diameter Code table	803= 80000 cycles by 100gr. O-Force	N= No function	N= non ROHS	TR= Tape / Reel		
		B= L= 9,0mm	131 = 130gr		803= 80000 cycles by 130gr. O-Force		R= ROHS conform	BU= Bulk-Ware		
			161 = 160gr		803= 80000 cycles by 160gr. O-Force					
			251 = 250gr		503= 50000 cycles by 250gr. O-Force					
			351 = 350gr		503= 50000 cycles by 350gr. O-Force					
			501 = 500gr		303= 30000 cycles by 500gr. O-Force					

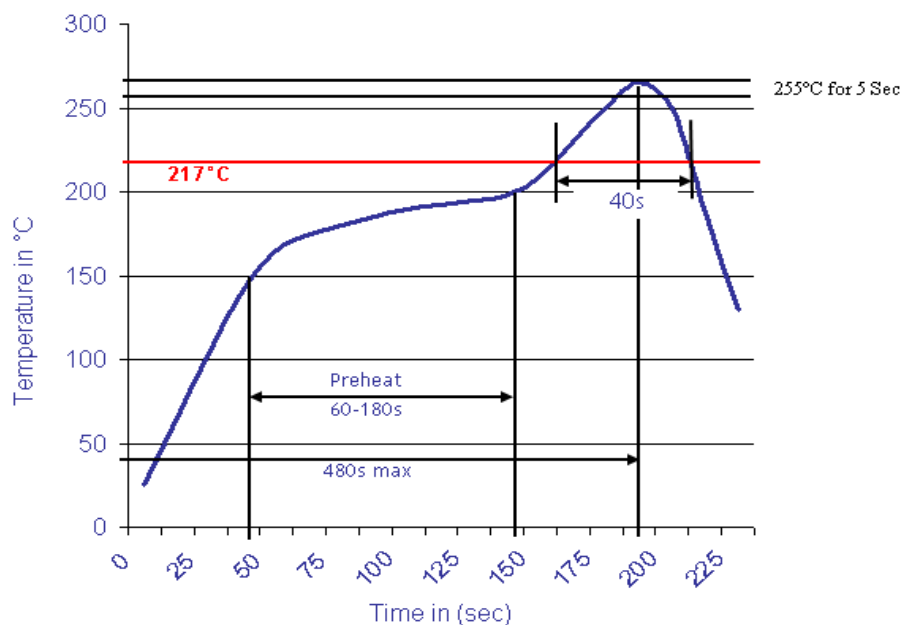
SMT TACT SWITCH 6x6mm	
Part No.:	Q12034
Customer:	

DRW:	Jason	CHKD	Wilson	MATL:	Wilson	TOLERANCE	Mason	DATE	01.03.2016
APPD:	Schumi			FINISH	Jamy		Sheet No.		3 from 4



Soldering Profile for Lead Free Soldering

Classification Reflow Profile (JEDEC J-STD-020C)



**SMT TACT SWITCH
6x6mm**

Part No.: **Q12034**

DRW:	Jason	CHKD	Wilson	MATL:	Wilson	TOLERANCE	Mason	DATE	01.03.2016
APPD:	Schumi			FINISH	Jamy		Sheet No.	4 from 4	Customer: