

EDCON-COMPONENTS



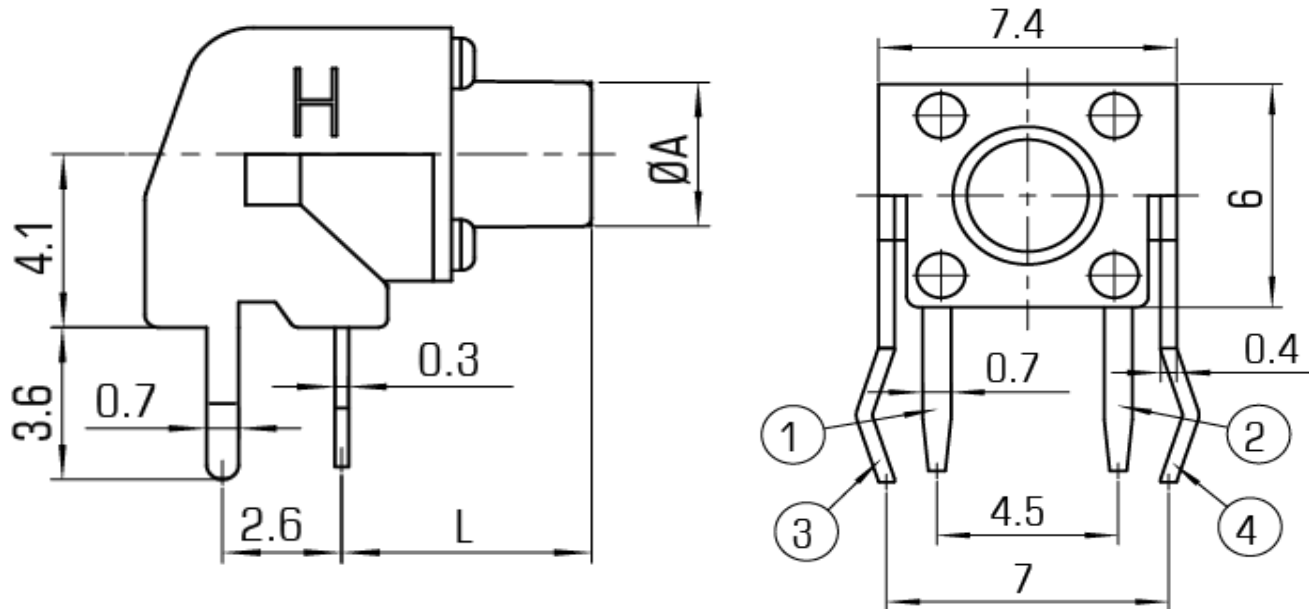
SPECIFICATION:

Current Rating:	DC12V / 50mA
Insulator Resistance:	100 Mega Ω min.
Contact Resistance:	100 m Ω max.
Travel:	0,25 / +/- 0,1mm
Operating Temperature:	-.40°C to +105°C
Lifetime:	look order code
Operating Force:	look order code

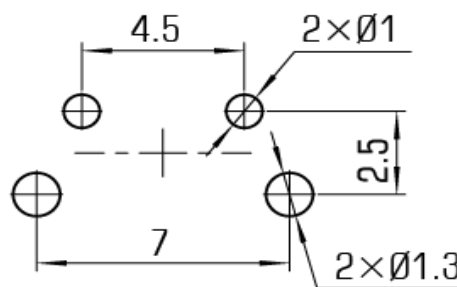
Common Specifications

Life Test	50/80 Cycles / Min with 5VDC 5mA Resistive load Cycles of Operation: As per individual Specifications
Dry Heat Proof	80°C +/- 2°C for 96hours after Test Kept in Normal Condition for 30Min.
Moisture Resistance	60°C +/- 2°C 90~95% RH for 96 Hours After Test, Kept in Normal Condition for 30 Minutes
Cold Proof	. 30°C for 96 Hours After Test Kept in Normal Condition for 30 Minutes.
Operating Force	If refers to the maximum load at the time of switching over of the contacts. (Point A in the figure)
Travel	This refers to the state of repeating the contact opening or closing momentarily at the time of the changeover of the switch to ON or OFF. Longer duration of this state

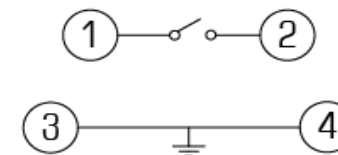
Drawing



PCB Layout



Circuit Diagramm



TACT SWITCH THT
6,0x6,0mm

Part No.: **Q11029**

DRW:	Jason	CHKD	Wilson	MATL:	Wilson	TOLERANCE	Mason	DATE	18.10.2016
APPD:	Schumi			FINISH	Jamy		Sheet No.		1 from 4

Customer:

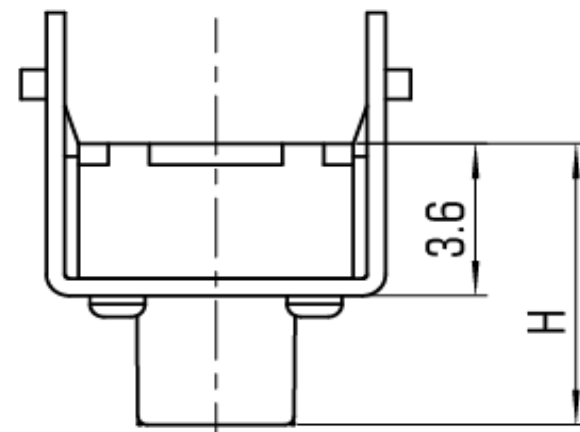
EDCON-COMPONENTS



Dimension of Code Length delivery

Order Code	H	A	L
0315	4,30	3,40	3,15
0335	4,50	3,40	3,35
0365	4,80	3,40	3,65
0385	5,00	3,50	3,85
0435	5,50	3,20	4,35
0485	6,00	3,20	4,85
0525	6,40	3,00	5,25
0535	6,50	3,20	5,35
0545	6,60	3,10	5,45
0585	7,00	3,20	5,85
0615	7,30	3,20	6,15
0635	7,50	3,20	6,35
0685	8,00	3,20	6,85
0735	8,50	3,20	7,35
0765	8,80	3,10	7,65
0785	9,00	3,10	7,85
0835	9,50	3,20	8,35
0855	9,70	3,10	8,55
0875	9,90	3,20	8,75
0885	10,00	3,20	8,85
0915	10,30	3,20	9,15
0935	10,50	3,00	9,35
0985	11,00	3,10	9,85
1035	11,50	3,20	10,35
1085	12,00	3,20	10,85
1135	12,50	3,10	11,35
1185	13,00	3,20	11,85
1235	13,50	3,00	12,35

Order Code	H	A	L
1290	14,0	3,2	12,9
1340	14,5	3,1	13,4
1390	15,0	3,1	13,9
1440	15,5	3,2	14,4
1445	15,6	3,1	14,5
1490	16,0	3,2	14,9
1540	16,5	3,2	15,4
1590	17,0	3,2	15,9
1591	17,0	2,0	15,9
1640	17,5	3,2	16,4
1690	18,0	3,2	16,9
1740	18,5	3,2	17,4
1790	19,0	3,2	17,9
1840	19,5	3,2	18,4
1860	19,7	3,2	18,6
1810	20,2	3,2	19,1
1990	21,0	3,2	19,9
2090	22,0	3,2	20,9
2190	23,0	3,2	21,9
2240	23,5	3,2	22,4
2390	25,0	3,2	23,9
2490	26,0	3,2	24,9
2610	27,2	3,2	26,1
2690	28,0	3,2	26,9
2790	29,0	3,2	27,9



**TACT SWITCH THT
6,0x6,0mm**

Part No.: **Q11029**

Customer:

DRW:	Jason	CHKD	Wilson	MATL:	Wilson	TOLERANCE	Mason	DATE	18.10.2016
APPD:	Schumi			FINISH	Jamy		Sheet No.	1 from 4	

EDCON-COMPONENTS



Ordering Informations

Serie	Total length (H)	Function	Operating Force	Function	Electrical life	Function	ROHS	Packing		
Q11029	0315	N	101	N	803	N	R	BU102		
Look Order Code Table	N= No function	101 = 100gr	N= No function	803= 80000 cycles of 100gr. O-Force	N= No function	N= non ROHS	BU= Bulk Ware 1000PCS			
		131 = 130gr		803= 80000 cycles of 130gr. O-Force		R= ROHS conform				
		161= 160gr		803= 80000 cycles of 160gr. O-Force						
		251= 250gr		503= 50000 cycles of 250gr. O-Force						
		351= 350gr		503= 50000 cycles of 350gr. O-Force						
		501= 500gr		303= 30000 cycles of 500gr. O-Force						

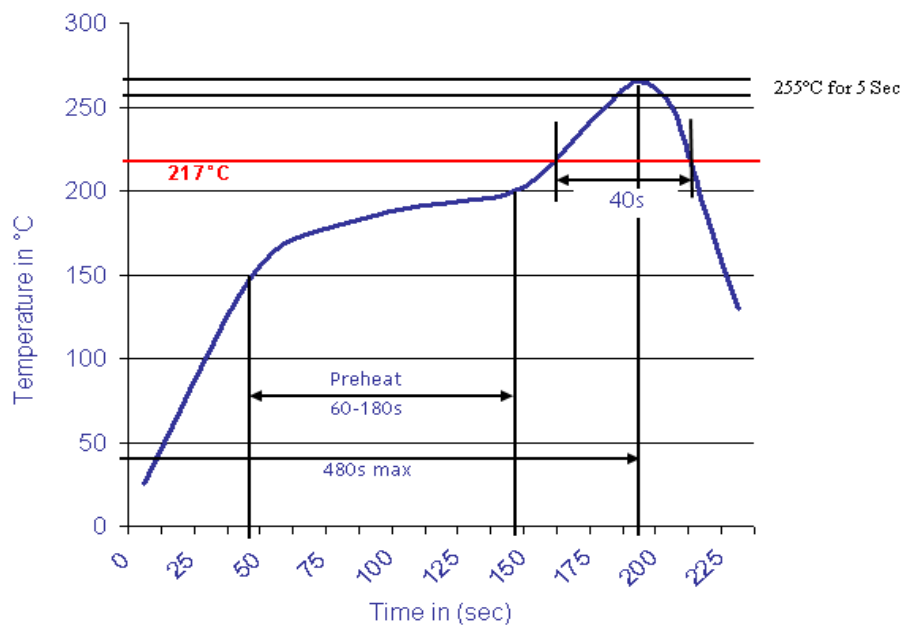
TACT SWITCH THT 6,0x6,0mm	
Part No.:	Q11029
Customer:	

DRW:	Jason	CHKD	Wilson	MATL:	Wilson	TOLERANCE	Mason	DATE	18.10.2016
APPD:	Schumi			FINISH	Jamy		Sheet No.		3 from 4



Soldering Profile for Lead Free Soldering

Classification Reflow Profile (JEDEC J-STD-020C)



**TACT SWITCH THT
6,0x6,0mm**

Part No.: **Q11029**

DRW:	Jason	CHKD	Wilson	MATL:	Wilson	TOLERANCE	Mason	DATE	18.10.2016
APPD:	Schumi			FINISH	Jamy		Sheet No.	4 from 4	Customer: