

EDCON-COMPONENTS



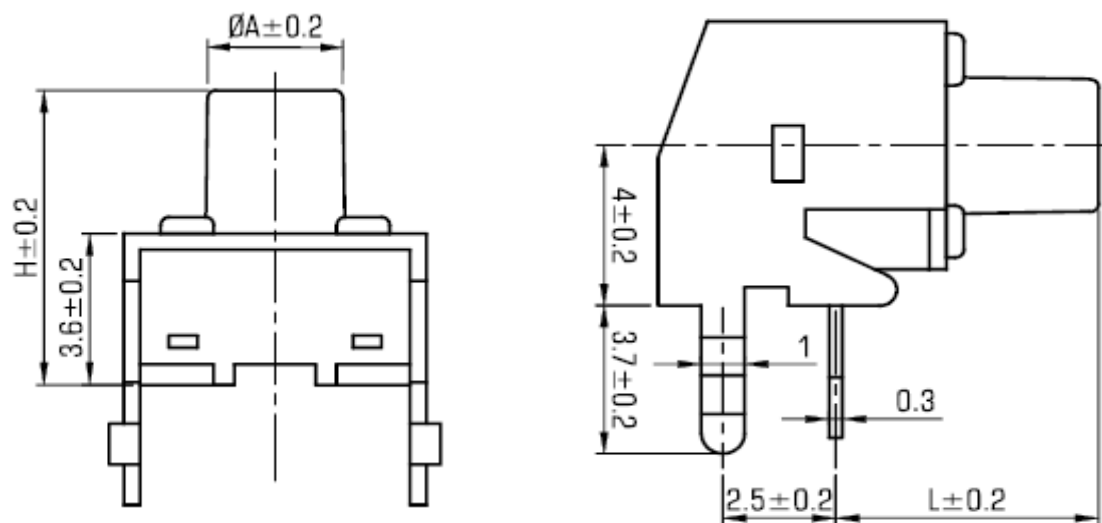
SPECIFICATION:

Current Rating:	DC12V / 50mA
Insulator Resistance:	100 Mega Ω min.
Contact Resistance:	100 m Ω max.
Travel:	0,25 / +/- 0,1mm
Operating Temperature:	-.40°C to +105°C
Lifetime:	look order code
Operating Force:	look order code

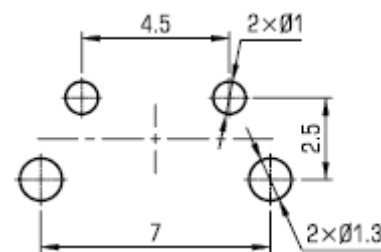
Common Specifications

Life Test	50/80 Cycles / Min with 5VDC 5mA Resistive load Cycles of Operation: As per individual Specifications
Dry Heat Proof	80°C +/- 2°C for 96hours after Test Kept in Normal Condition for 30Min.
Moisture Resistance	60°C +/- 2°C 90~95% RH for 96 Hours After Test, Kept in Normal Condition for 30 Minutes
Cold Proof	. 30°C for 96 Hours After Test Kept in Normal Condition for 30 Minutes.
Operating Force	If refers to the maximum load at the time of switching over of the contacts. (Point A in the figure)
Travel	This refers to the state of repeating the contact opening or closing momentarily at the time of the changeover of the switch to ON or OFF. Longer duration of this state

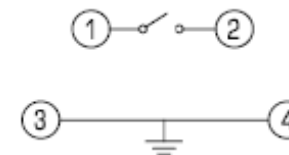
Drawing



PCB Layout



Circuit Diagramm



Right Angle TACT SWITCH
THT 6,0x6,0mm

Part No.: **Q11018**

Customer:

DRW:	Jason	CHKD	Wilson	MATL:	Wilson	TOLERANCE	Mason	DATE	20.07.2017
APPD:	Schumi			FINISH	Jamy		Sheet No.		1 from 4

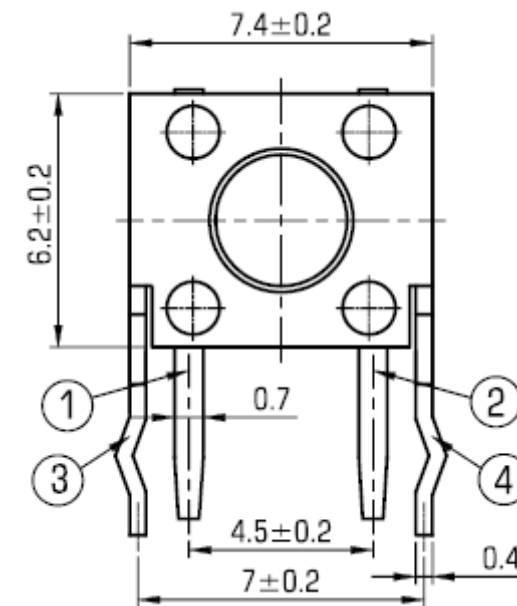
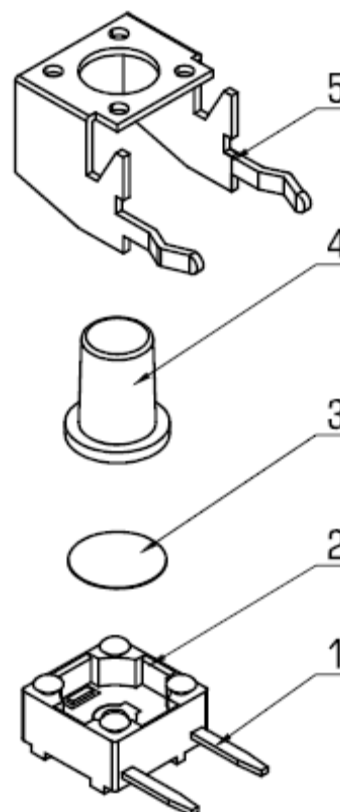
EDCON-COMPONENTS



Knob-Length / Dimension Information

Order Code	H	A	L
0315	4,3	3,4	3,15
0335	4,5	3,4	3,35
0365	4,8	3,4	3,65
0385	5,0	3,5	3,85
0435	5,5	3,2	4,35
0485	6,0	3,2	4,85
0525	6,4	3,0	5,25
0535	6,5	3,2	5,35
0545	6,6	3,1	5,45
0585	7,0	3,2	5,85
0615	7,3	3,2	6,15
0635	7,5	3,2	6,35
0685	8,0	3,2	6,85
0735	8,5	3,2	7,35
0765	8,8	3,1	7,65
0785	9,0	3,1	7,85
0835	9,5	3,2	8,35
0855	9,7	3,1	8,55
0875	9,9	3,2	8,75
0885	10,0	3,2	8,85
0915	10,3	3,2	9,15
0935	10,5	3,0	9,35
0985	11,0	3,1	9,85
1035	11,5	3,2	10,35
1085	12,0	3,2	10,85
1135	12,5	3,1	11,35
1185	13,0	3,2	11,85

Order Code	H	A	L
1235	13,5	3,0	12,35
1285	14,0	3,2	12,85
1335	14,5	3,1	13,35
1385	15,0	3,1	13,85
1435	15,5	3,2	14,35
1445	15,6	3,1	14,45
1485	16,0	3,2	14,85
1535	16,5	3,2	15,35
1585	17,0	3,2	15,85
158A	17,0	2,0	15,85
0965	10,8	3,2	9,65
1695	18,1	3,2	16,95
1515	16,3	3,2	15,15



1	Terminal	Copper w. Silver Cladding
2	Holder	Black GP. PA66
3	Contact	Copper w. Silver Cladding
4	Stem	Black GP. PA66
5	Cover	Ferrum w. Coper a Tin Clad

Right Angle TACT SWITCH THT 6,0x6,0mm

Part No.: **Q11018**

Customer:

DRW:	Jason	CHKD	Wilson	MATL:	Wilson	TOLERANCE	Mason	DATE	20.07.2017
APPD:	Schumi			FINISH	Jamy		Sheet No.		2 from 4

EDCON-COMPONENTS



Ordering Informations

Serie	Order Code look table	Function	Operating Force	Function	Electrical life	Function	ROHS	Packing		
Q11018	0315	N	101	N	104	N	R	BU102		
	xxxx= Knob Length order Code Table	N= No function	101 = 100gr	N= No function	104= 100000 cycles of 100gr. O-Force	N= No function	N= non ROHS	BU= Bulk Ware 1000PCS		
			131 = 130gr		104= 100000 cycles of 100gr. O-Force		R= ROHS conform			
			161= 160gr		104= 100000 cycles of 100gr. O-Force					
			251= 250gr		104= 100000 cycles of 100gr. O-Force					
			351= 350gr		503= 50000 cycles of 250gr. O-Force					
			501= 500gr		503= 50000 cycles of 350gr. O-Force					
			303= 30000 cycles of 500gr. O-Force							

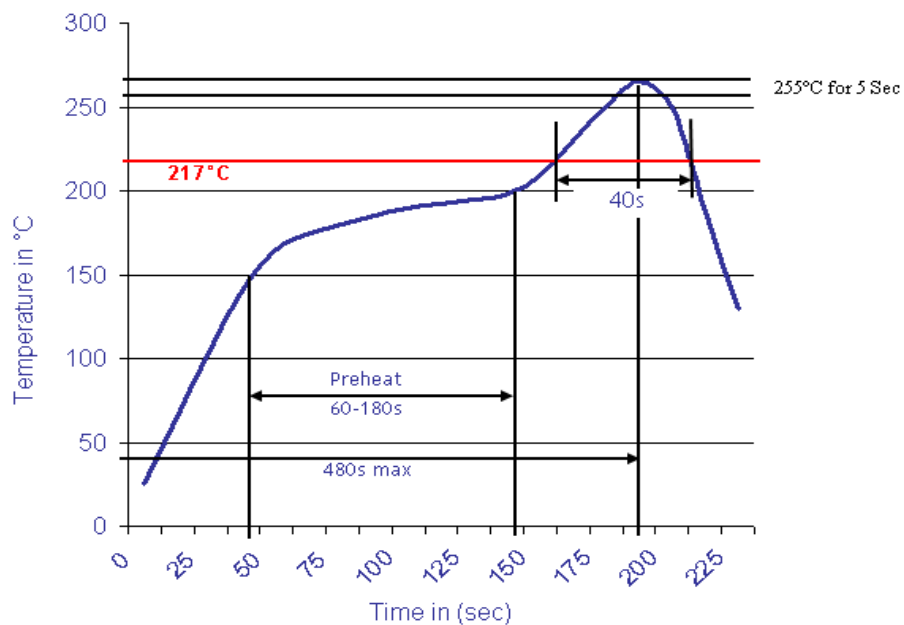
**Right Angle TACT SWITCH
THT 6,0x6,0mm**
Part No.: **Q11018**
Customer:

DRW:	Jason	CHKD	Wilson	MATL:	Wilson	TOLERANCE	Mason	DATE	20.07.2017
APPD:	Schumi			FINISH	Jamy		Sheet No.		3 from 4



Soldering Profile for Lead Free Soldering

Classification Reflow Profile (JEDEC J-STD-020C)



**Right Angle TACT SWITCH
THT 6,0x6,0mm**

Part No.: **Q11018**

Customer:

DRW:	Jason	CHKD	Wilson	MATL:	Wilson	TOLERANCE	Mason	DATE	20.07.2017
APPD:	Schumi			FINISH	Jamy		Sheet No.	4 from 4	