

MMBD4448HT/ HTA/HTC/HTS

Features

- Fast Switching Speed
- For General Purpose Switching Applications
- High Conductance, Power Dissipation
- Ultra-Small Surface Mount Package
- Case Material:Molded Plastic. UL Flammability Classificatio Rating 94-0 and MSL Rating 1

**150mW
Switching Diodes**

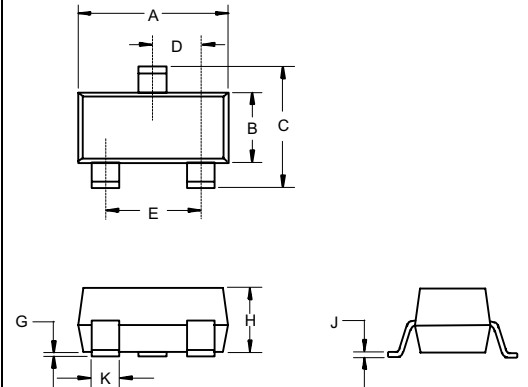
Maximum Ratings

Symbol	Rating	Rating	Unit
V_{RM}	Non-Repetitive Peak Reverse Voltage	100	V
V_{RRM}	Peak Repetitive Reverse Voltage	80	V
V_{RWM}	Working Peak Reverse Voltage		
V_R	DC Blocking Voltage		
$V_{R(RMS)}$	RMS Reverse Voltage	57	V
I_{FM}	Forward Continuous Current	500	mA
I_O	Average Rectified Output Current	250	mA
I_{FSM}	Peak Forward Surge Current @1.0 μ s	4.0	A
		2.0	
$R_{\theta JA}$	Thermal Resistance Junction to Ambient	833	$^{\circ}\text{C}/\text{W}$
P_D	Power dissipation	150	mW
T_J	Junction Temperature	150	$^{\circ}\text{C}$
T_{STG}	Storage Temperature	-65 to +150	$^{\circ}\text{C}$

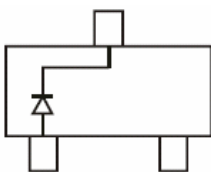
Electrical Characteristics @ 25 $^{\circ}\text{C}$ Unless Otherwise Specified

Symbol	Parameter	Min	Max	Test Conditions
$V_{(BR)}$	Reverse Breakdown Voltage	80V	---	$I_R=2.5 \mu$ A
I_R	Reverse Voltage Leakage Current	---	0.1 μ A	$V_R=70\text{V}$
			25 nA	$V_R=20\text{V}$
V_F	Forward Voltage	0.62	0.72V	$I_F=5.0\text{mA}$
		---	0.855V	$I_F=10\text{mA}$
		---	1.0V	$I_F=100\text{mA}$
		---	1.25V	$I_F=150\text{mA}$
C_T	Total Capacitance	---	3.5pF	$V_R=6\text{V}$, $f=1\text{MHz}$
t_{rr}	Reverse Recovery Time	---	4.0ns	$I_F=5\text{mA}$, $V_R=6\text{V}$

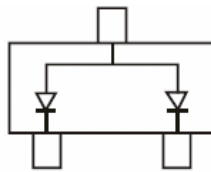
SOT-523



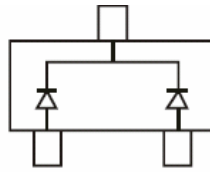
DIM	INCHES		MM		NOTE
	MIN	MAX	MIN	MAX	
A	.059	.067	1.50	1.70	
B	.030	.033	0.75	0.85	
C	.057	.069	1.45	1.75	
D	.020 Nominal		0.50Nominal		
E	.035	.043	0.90	1.10	
G	.000	.004	.000	.100	
H	.028	.031	.70	0.80	
J	.004	.008	.100	.200	
K	.010	.014	.25	.35	



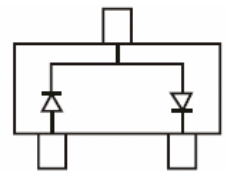
MMBD4448HT Marking: A3



MMBD4448HTA Marking: A6



MMBD4448HTC Marking: A7



MMBD4448HTS Marking: AB

MMBD4448HT/HTA/HTC/HTS

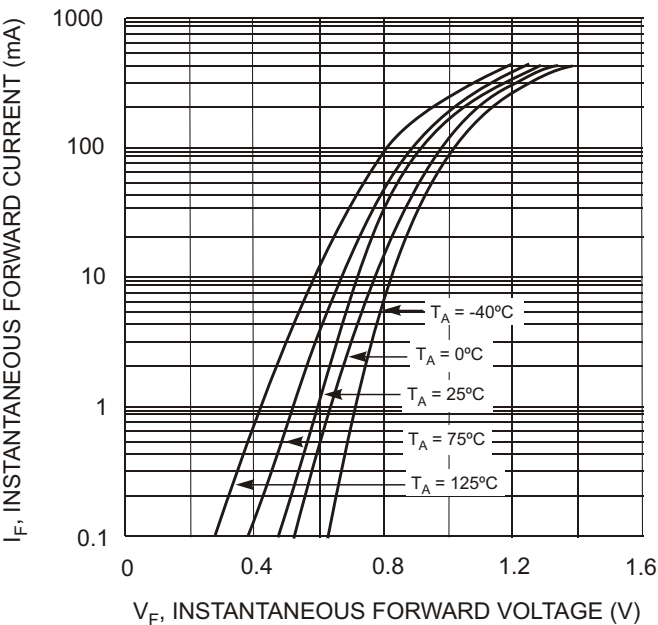


Fig. 1 Typical Forward Characteristics

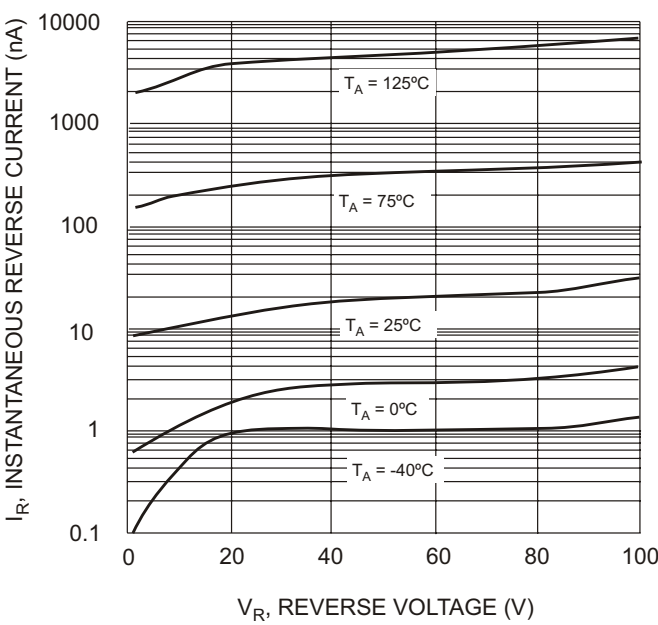


Fig. 2 Typical Reverse Characteristics

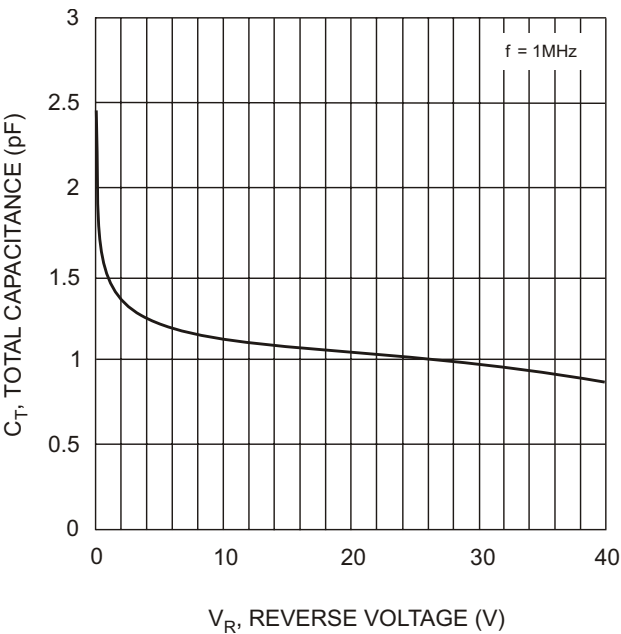


Fig. 3 Typical Capacitance vs. Reverse Voltage

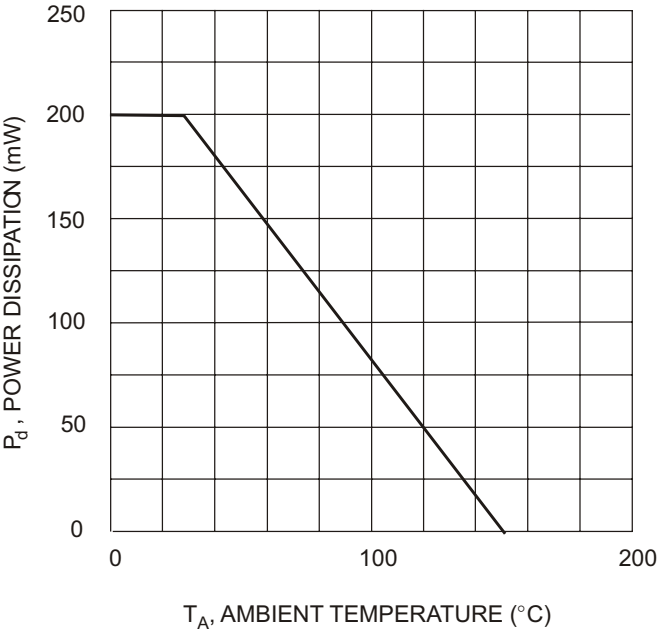


Fig. 4 Power Derating Curve, Total Package

Ordering Information

Device	Packing
(Part Number)-TP	Tape&Reel;3Kpcs/Reel