

TM

BAS40WT/-04/-05/-06

Features

- Pow Dissipation PD=200mW Tamb=25°C
- Forward Current I_F=200mA
- Breakdown Voltage V_{BR}=40V
- Case Material: Molded Plastic. UL Flammability Classification Rating 94V-0 and MSL Rating 1

200mW 40Volt Plastic-Encapsulate Diode

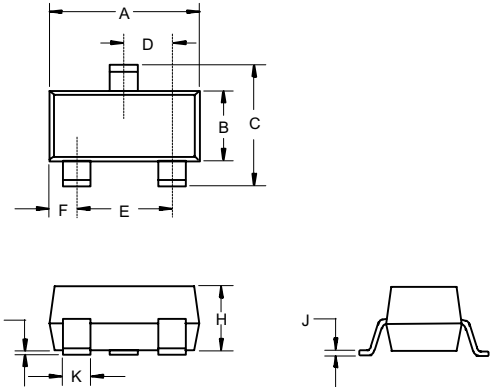
Maximum Ratings

- Operating Temperature: -55°C to +150°C
- Storage Temperature: -55°C to +150°C

Electrical Characteristics @ 25°C Unless Otherwise Specified

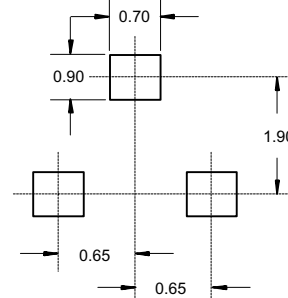
Reverse Breakdown Voltage	V _{(BR)R}	40V	I _R =10μA
Maximum Instantaneous Forward Voltage	V _F	380mV 1000mV	I _{FM} = 1mA; I _{FM} = 40mA;
Maximum DC Reverse Current At Rated DC Blocking Voltage	I _R	1uA	V _R =30Volts
Typical Junction Capacitance	C _D	5pF	Measured at 1.0MHz, V _R =0V
Reverse Recovery Time	T _{rr}	5nS	I _F =10mA through I _R =10mA to I _R =1mA

SOT-323



DIM	INCHES		MM		NOTE
	MIN	MAX	MIN	MAX	
A	.071	.087	1.80	2.20	
B	.045	.053	1.15	1.35	
C	.079	.087	2.00	2.20	
D	.026 Nominal		0.65Nominal		
E	.047	.055	1.20	1.40	
F	.012	.016	.30	.40	
G	.000	.004	.000	.100	
H	.035	.039	.90	1.00	
J	.004	.010	.100	.250	
K	.012	.016	.30	.40	

Suggested Solder Pad Layout



BAS40WT

TM

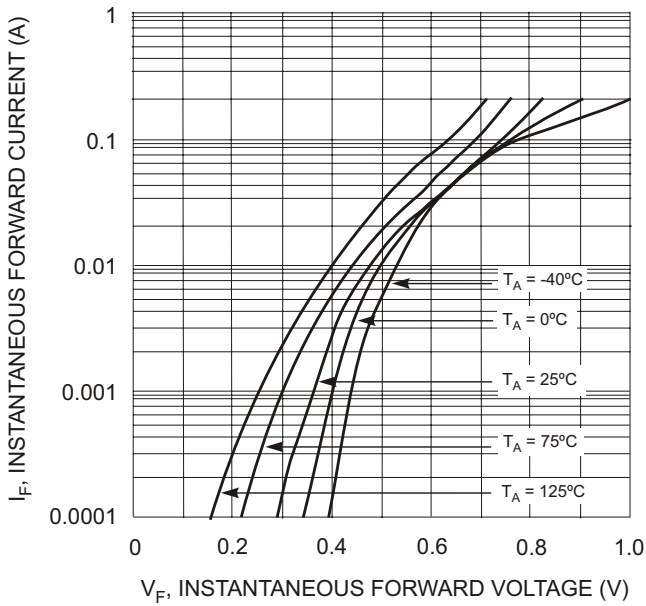


Fig. 1 Typical Forward Voltage

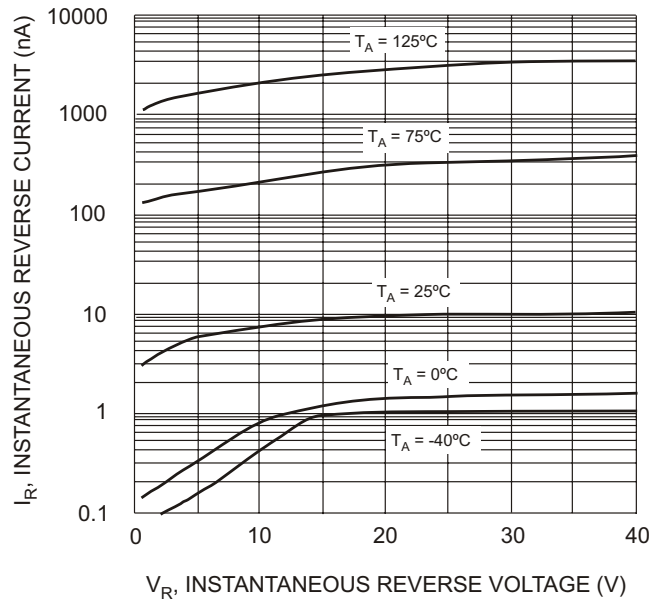


Fig. 2 Typical Reverse Characteristics

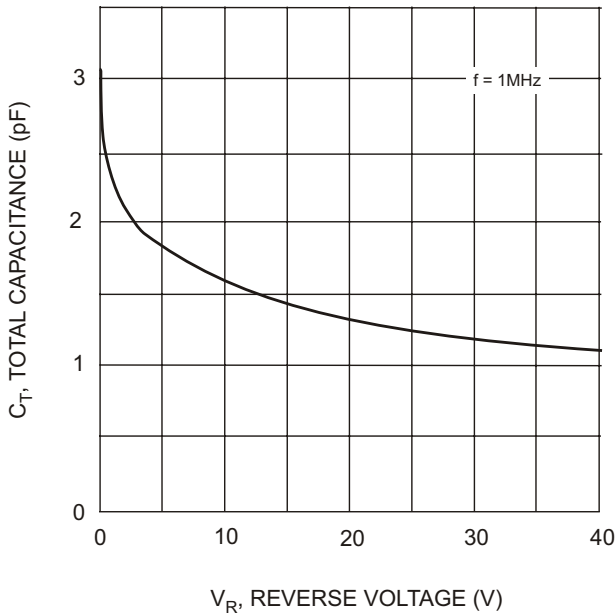
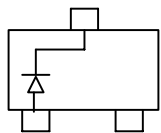
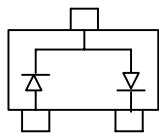


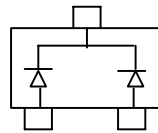
Fig. 3 Typical Capacitance



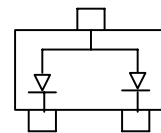
BAS40WT Marking:43/K43/S40



BAS40WT-04 Marking:44/K44/S42



BAS40WT-05 Marking:45/K45/S43



BAS40WT-06 Marking:46/K46/S44

Ordering Information

Device	Packing
(Part Number)-TP	Tape&Reel;3Kpcs/Reel