

™

BAS40TW/DW-04/ DW-05 /DW-06 /BRW

Features

- Fast Switching
- Low Forward Voltage Drop
- Low Power Dissipation
- Ultra-Small Surface Mount Package
- Case Material:Molded Plastic. UL Flammability Classificatio Rating 94-0 and MSL Rating 1

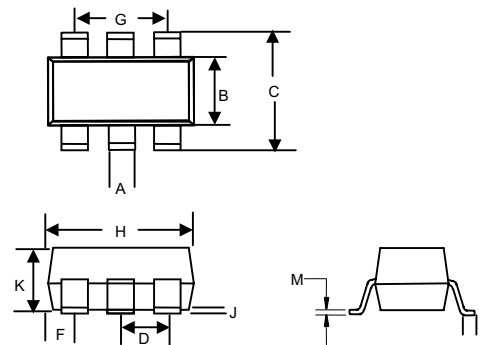
200mW

SCHOTTKY BARRIER Diode

Maximum Ratings

Symbol	Rating	Rating	Unit
V_{RRM} V_{RWM} V_R	Peak Repetitive Reverse Voltage Working Peak Reverse Voltage DC Blocking Voltage	40	V
I_o	Average Rectified Output Current	200	mA
$R_{\theta JA}$	Thermal Resistance Junction to Ambient	625	°C/W
P_D	Power dissipation	200	mW
T_J	Junction Temperature	-55 to +125	°C
T_{STG}	Storage Temperature	-65 to +125	°C

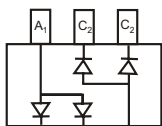
SOT-363



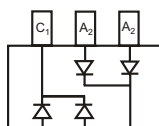
Electrical Characteristics @ 25°C Unless Otherwise Specified

Symbol	Parameter	Min	Max	Test Conditions
$V_{(BR)}$	Reverse breakdown voltage	40V	-----	$I_R = 10\mu A$
I_R	Reverse Voltage Leakage Current	---	200nA	$V_R = 30V$
V_F	Forward Voltage	---	0.38V 1.0V	$I_F = 1mA$ $I_F = 40mA$
C_T	Total Capacitance	---	5pF	$V_R = 0V, f = 1MHz$
t_{rr}	Reverse Recovery Time	---	5.0ns	$I_F = 10mA, I_R = I_F = 1mA$ $R_L = 100\Omega$

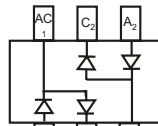
DIM	DIMENSIONS				NOTE
	INCHES		MM		
	MIN	MAX	MIN	MAX	
A	.004	.012	0.10	0.30	
B	.045	.053	1.15	1.35	
C	.079	.087	2.00	2.20	
D	.026		0.65Nominal		
F	.012	.016	0.30	0.40	
H	.071	.087	1.80	2.20	
J	---	.004	---	0.10	
K	.035	.039	0.90	1.00	
L	.010	.016	0.25	0.40	
M	.004	.016	0.10	0.25	



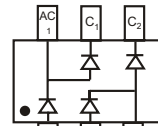
BAS40DW-06
Marking: K461



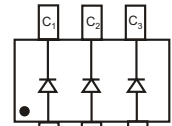
BAS40DW-05
Marking: K45



BAS40DW-04
Marking: K44



BAS40BRW
Marking: K47



BAS40TW
Marking: K43

BAS40TW/DW-04/DW-05/DW-06/BRW

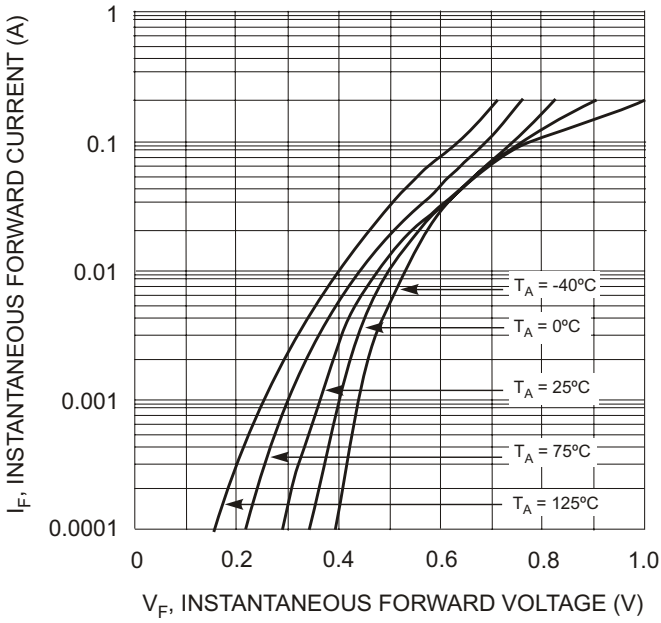


Fig. 1 Typical Forward Voltage

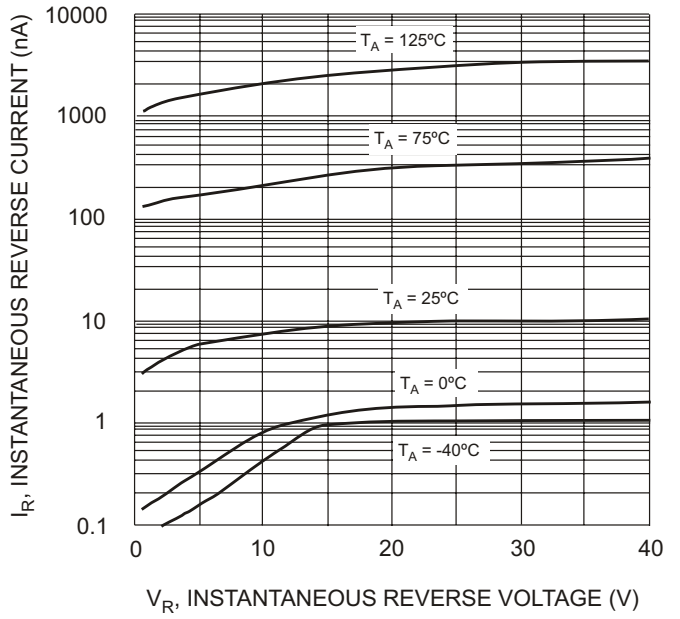


Fig. 2 Typical Reverse Characteristics

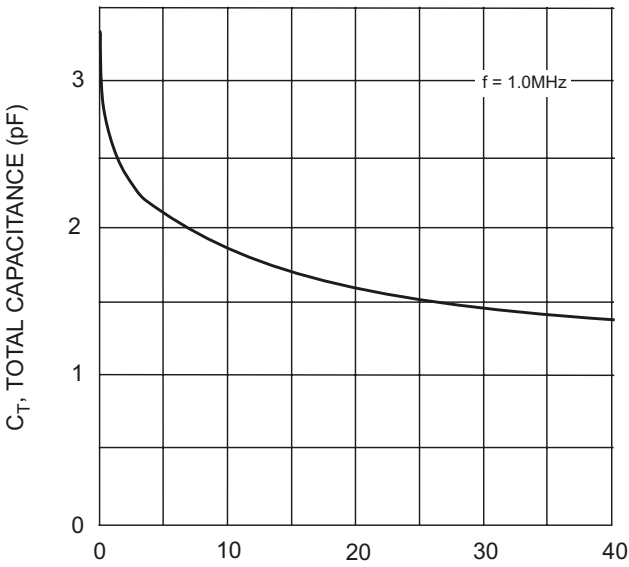


Fig. 3 Typical Capacitance

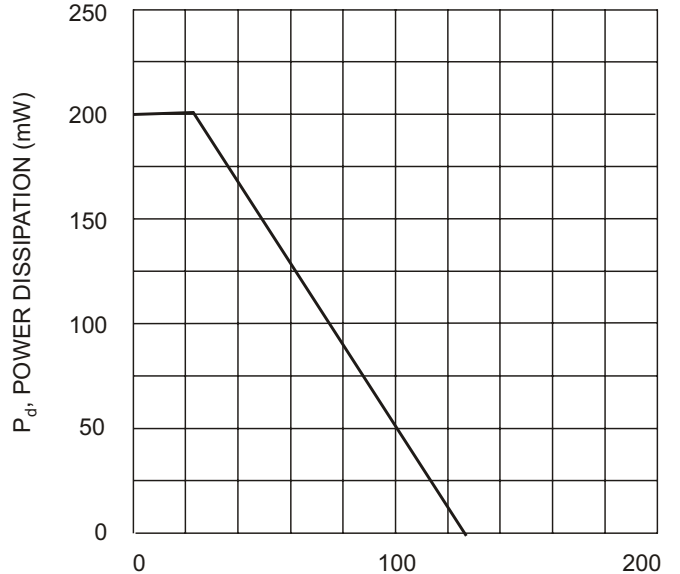


Fig. 4 Power Derating Curve, Total Package

Ordering Information

Device	Packing
(Part Number)-TP	Tape&Reel;3Kpcs/Reel