



THT, Radial E-Cap., Snap-In, Wide Temperature Range at 105°C by 2000 hrs (6,3V~550V) , ROHS Conform, Packing Box

Items		Performance Characteristics										
Operating temperature range	-40°C +105°C (6,3~315V, -25°C ~ +105°C (350~550V)											
Leakage current max.	I=3 √cv (µA) (after 5 minutes)											
Capacitance tolerance	±20% at 120Hz, 20°C											
Dissipation factor max. (at 120Hz, 20°C)	WV	6,3	10	16	25	35	50	63	80, 100	160~400	450~500	
	TanQ	0,60	0,55	0,50	0,40	0,35	0,30	0,25	0,20	0,15	0,20	
Load life (after application of the rated voltage for 2000hrs at 105°C)	Leakage Current					Less than specified Value						
	Capacitance Change					Within ±20% off initial Value						
	TanQ					Less than 200% of specified value						
Shelf life (at 105°C)	After 1000 hours no load test, leakage current, capacitance and tanQ are same as load life value.											

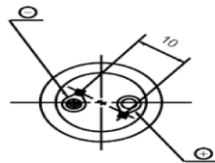
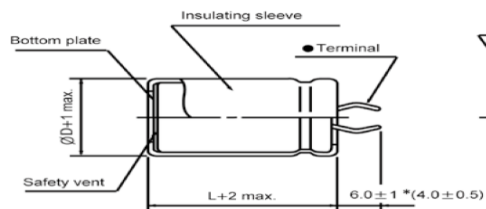
FREQUENCY COEFFICIENT OF PERMISSIBLE RIPPLE CURRENT

WV	Frequency	50HZ	120Hz	300Hz	1kHz	10kHz≤
~ 100		0,85	1,00	1,06	1,15	1,20
1600 ~ 250		0,85	1,00	1,20	1,25	1,45
315 ~		0,85	1,00	1,15	1,20	1,40

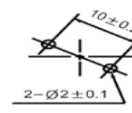
Technical Details

Range (µF)	3300	∅D(mm)	30,0
Voltage	80	L(mm)	30,0
Impedance (Ω)	-.	F(mm)	10,0
Ripple Current (mA)	3,2	∅d(mm)	0
ESR (Ω) max.at 20°C 10KHz	-.	α(mm)	0
Lifetime (hrs)	2000		2,0
Operating- Temperature Range (°C)	-.40°C ~ +105°C		-.

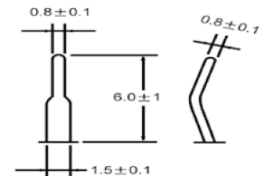
∅D ≤ 40



PC Board Mounting Holes

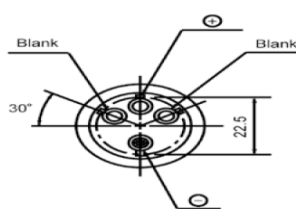
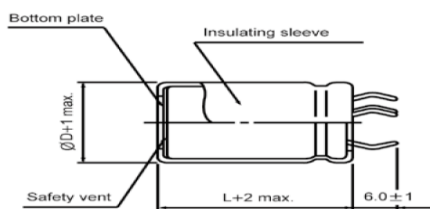


Terminal

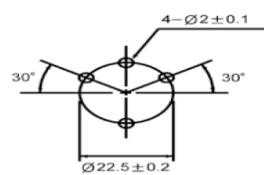


* Shorter terminal(4.0±0.5) is also available upon request.
 Terminal length of height 20mm products is applied shorter terminal to standard terminal type.

∅D = 35, 40



PC Board Mounting Holes



DRW:	Lexua	CHKD	Wilson	MATL:	ChuChu	DATE	03.02.2025
APPD:	Jimmy			FINISH	Josy	Sheet	1 from 2

Copyright by S.Tiede



THT, Radial E-Cap., Snap-In, Wide Temperature Range at 105°C by 2000 hrs (6,3V~550V) , ROHS Conform, Packing Box

Ordering Informations:

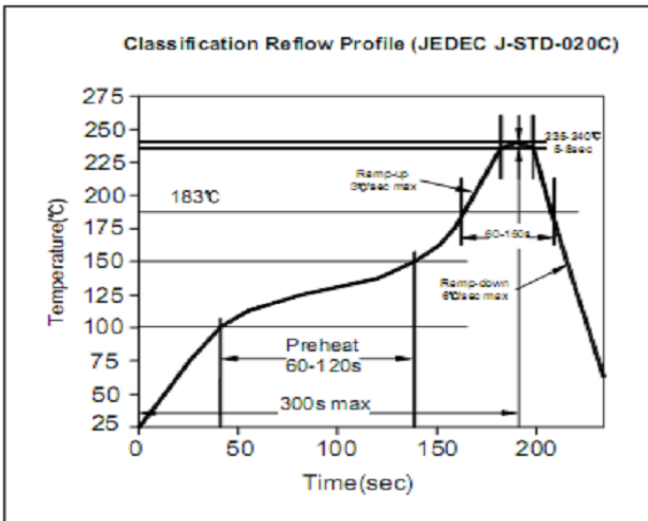
Serie-No. / Voltage / Range / Size	Capacity Tolerance	ROHS	Packing
------------------------------------	--------------------	------	---------

I14082-8003323030	M	R	BU
-------------------	---	---	----

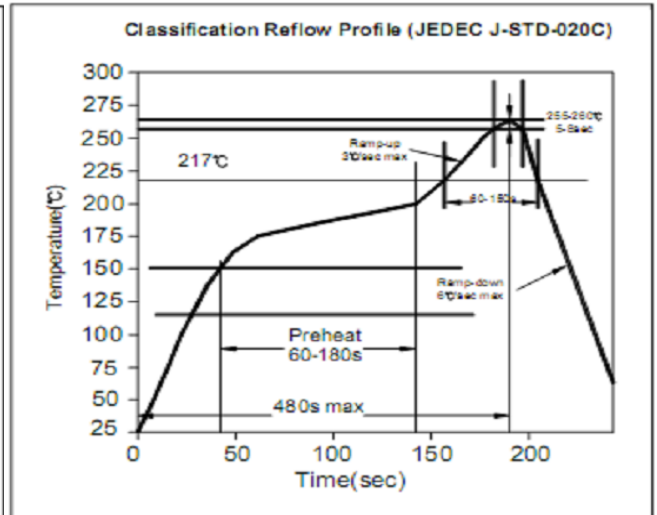
Serie	Voltage (V)	Range μ H)	D * L (mm)	Tolerance Order Code	R= ROHS N= NON ROHS	BU= Bulk-Ware (Box)

Soldering Information

Lead Solder Performance



Lead free Solder Performance



DRW:	Lexua	CHKD	Wilson	MATL:	ChuChu	DATE	03.02.2025
APPD:	Jimmy			FINISH	Josy	Sheet	2 from 2