



**THT, Radial E-Cap., Snap-In, Standard Temp-Range, included 500WV products, Life time 2000 hours, ROHS Conform, Packing Box**

Items		Performance Characteristics										
Operating temperature range		-40°C +85°C (6,3~315V, -25°C ~ +85°C ( 350~550V)										
Leakage current max.		I=3 √cv (µA) (after 5 minutes)										
Capacitance tolerance		±20% at 120Hz, 20°C										
Dissipation factor max. (at 120Hz, 20°C)		WV	6,3	10	16	25	35	50	63	80, 100	160~400	450 550
		TanQ	0,60	0,55	0,50	0,40	0,35	0,30	0,25	0,20	0,15	0,20
Load life ( after application of the rated voltage for 2000hrs at 85°C)		Leakage Current					Less than specified Value					
		Capacitance Change					Within ±20% off initial Value					
		TanQ					Less than 200% of specified value					
Shelf life (at 85°C)		After 1000 hours no load test, leakage current, capacitance and tanQ are same as load life value.										

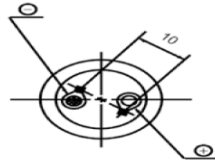
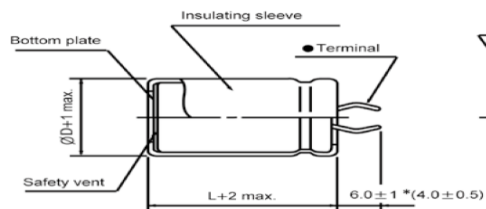
**FREQUENCY COEFFICIENT OF PERMISSIBLE RIPPLE CURRENT**

WV	Frequency	50HZ	120Hz	300Hz	1kHz	10kHz≤
~ 100		0,85	1,00	1,06	1,15	1,20
160 ~ 250		0,85	1,00	1,20	1,25	1,45
315 ~		0,85	1,00	1,15	1,20	1,40

**Technical Details**

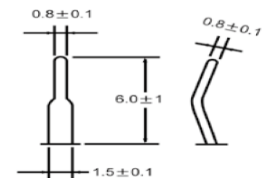
Range (µF)	330	∅D(mm)	30,0
Voltage	450	L(mm)	45,0
Impedance (Ω)	-.	F(mm)	10,0
Ripple Current (mA)	1,94	∅d(mm)	0
ESR (Ω) max.at 20°C 10KHz	#NV	α(mm)	0
Lifetime (hrs)	2000		2,0
Operating- Temperature Range (°C)	-.25°C ~ +85°C		-.

∅D ≤ 40



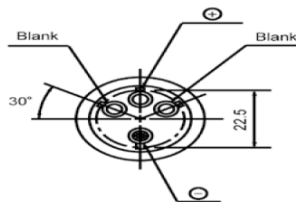
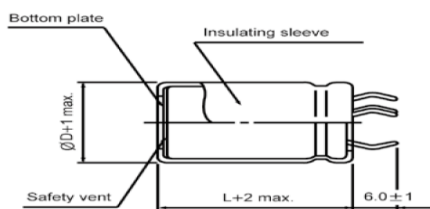
PC Board Mounting Holes

Terminal

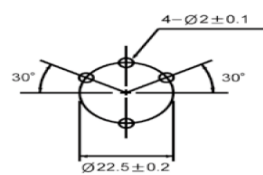


\* Shorter terminal(4.0±0.5) is also available upon request.  
 Terminal length of height 20mm products is applied shorter terminal to standard terminal type.

∅D = 35, 40



PC Board Mounting Holes



DRW:	Lexua	CHKD	Wilson	MATL:	ChuChu	DATE	11.01.2025
APPD:	Jimmy			FINISH	Josy	Sheet	1 from 2

Copyright by S.Tiede



THT, Radial E-Cap., Snap-In, Standard Temp-Range, included 500WV products, Life time 2000 hours, ROHS Conform, Packing Box

**Ordering Informations:**

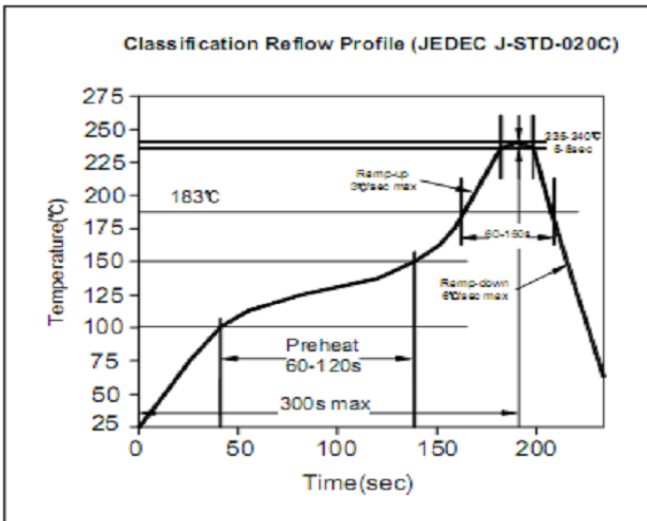
Serie-No. / Voltage / Range / Size	Capacity Tolerance	ROHS	Packing
------------------------------------	--------------------	------	---------

I14078-4513313045	M	R	BU
-------------------	---	---	----

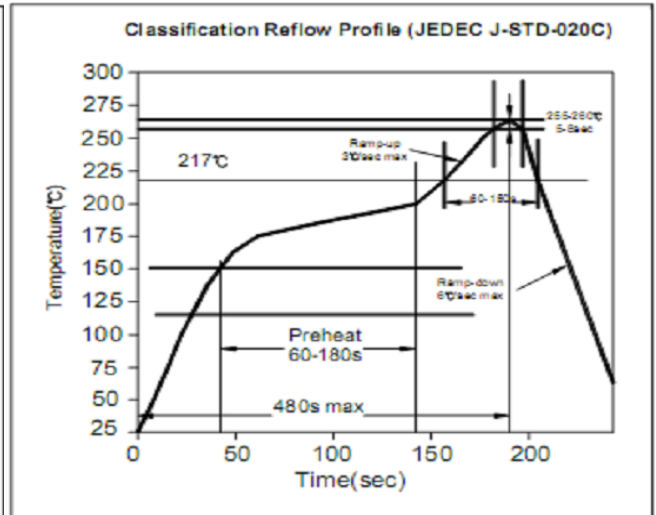
Serie	Voltage (V)	Range $\mu$ H)	D * L (mm)	Tolerance Order Code	R= ROHS N= NON ROHS	BU= Bulk-Ware (Box)

**Soldering Information**

**Lead Solder Performance**



**Lead free Solder Performance**



DRW:	Lexua	CHKD	Wilson	MATL:	ChuChu	DATE	11.01.2025
APPD:	Jimmy			FINISH	Josy	Sheet	2 from 2