

# DATA SHEET

## DIN 41617 Connector Female Type

### Serie: T22006

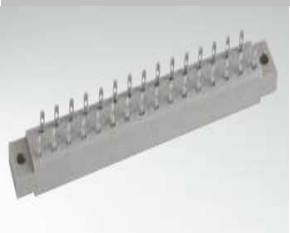
**DIN 41617 Connector  
Female Type**

Serie No.: **T22006**

Customer:

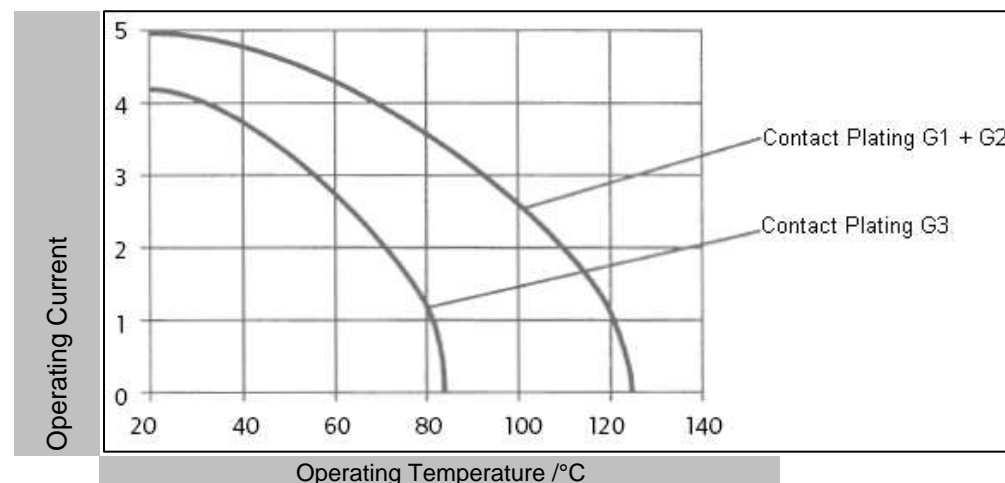
DRW:	Jason	CHKD	Wilson	MATL:	Wilson	TOLERANCE	Mason	DATE	19.02.2012
APPD:	Schumi			FINISH	Jamy		Sheet No.		1 from 5

# EDCON-COMPONENTS



## Specifications

Material of Body:	Polycarbonat with GF		
Material contacts:	Copper		
	UL94V-1		
Contact Resistance:	≤ 15mΩ		
Contact Isolations-Resistance: G1	≥ 10 <sup>12</sup> Ω		
Contact Isolations-Resistance: G2	≥ 10 <sup>11</sup> Ω		
Contact Isolations-Resistance: G3	≥ 10 <sup>10</sup> Ω		
Proof-Voltage: Contact to Masse	900V		
Proof-Voltage: Contact to Contact	1150V		
Withstanding Voltage:	250V		
Operating current +20°C	Contact G1 + G2 = 4A		
Operating current +70°C	Contact G1 + G2 = 4A		
Operating current +100°C	Contact G3 = 2A		
Operating Temperatur: G1	. -65°C to ~ 125°C		
Operating Temperatur: G2	. -55°C to ~ 125°C		
Operating Temperatur: G3	. -25°C to ~ 85°C		
Connecting force in/out (max.)	13Pos. 32N/AU	30N/SI	
	21Pos. 33N/AU	48N/SI	
	31Pos. 48N/AU	70N/SI	
Contact operations G3	50 Operations		
Contact operations G2	400 Operations		
Contact operations G1	500 Operations		
Contact operations Silver	500 Operations		



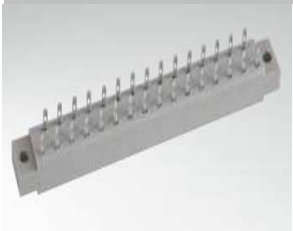
**DIN 41617 Connector  
Female Type**

Part No.: **T22006**

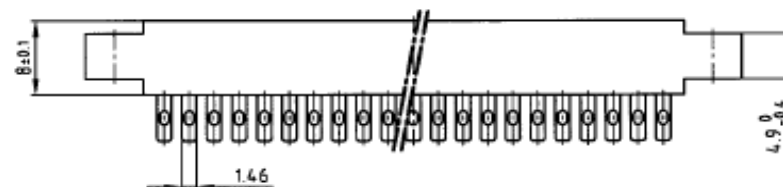
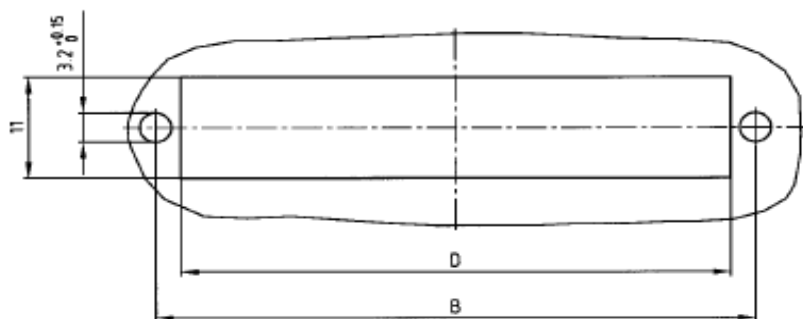
DRW:	Jason	CHKD	Wilson	MATL:	Wilson	TOLERANCE	Mason	DATE	19.02.2012
APPD:	Schumi			FINISH	Jamy		Sheet No.	2 from 5	

Customer:

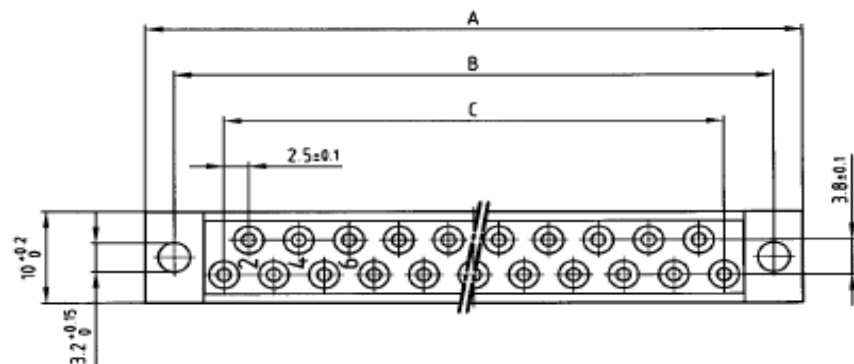
# EDCON-COMPONENTS



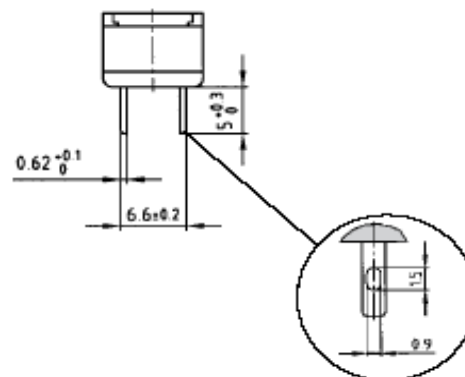
Drawing



## Panel Cutout



Number of Position	A ±0,2	B ±0,2	C ±0,2	D ±0,2
13	45,8	40	12x2,5 =30	35
21	65,8	60	20x2,5 =50	55
31	90,8	85	30x2,5 =75	80



**DIN 41617 Connector  
Female Type**

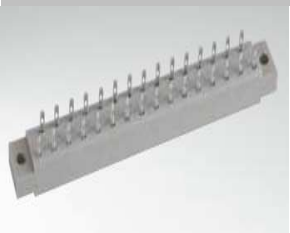
Part No.: **T22006**

DRW:	Jason	CHKD	Wilson	MATL:	Wilson	TOLERANCE	Mason	DATE	19.02.2012
APPD:	Schumi			FINISH	Jamy		Sheet No.	3 from 5	Customer:

[www.edcon-components.com](http://www.edcon-components.com)

email: [info@edcon-components.com](mailto:info@edcon-components.com)

# EDCON-COMPONENTS



## Ordering Informations

Serie	Number of Position	Contact Plating	Special Cunction	ROHS	Packing Code					
-------	--------------------	-----------------	------------------	------	--------------	--	--	--	--	--

<b>T22006</b>	<b>13</b>	<b>SI</b>	<b>XX</b>	<b>R</b>	<b>BU</b>					
---------------	-----------	-----------	-----------	----------	-----------	--	--	--	--	--

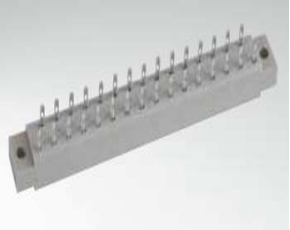
<b>13=</b> 13Pos.	<b>SI=</b> Silber (Standard)	<b>XX=</b> No function	<b>R=</b> ROHS Conform	<b>BU=</b> Bulk Ware
<b>13, 21, 31 Pos.</b>	<b>G1=</b> Gold Plating 1		<b>N=</b> NON ROHS Conform	<b>TY=</b> Tray Packing
	<b>G2=</b> Gold Plating 2			
	<b>G3=</b> Gold Plating 3			

**DIN 41617 Connector  
Female Type**

Part No.: **T22006**

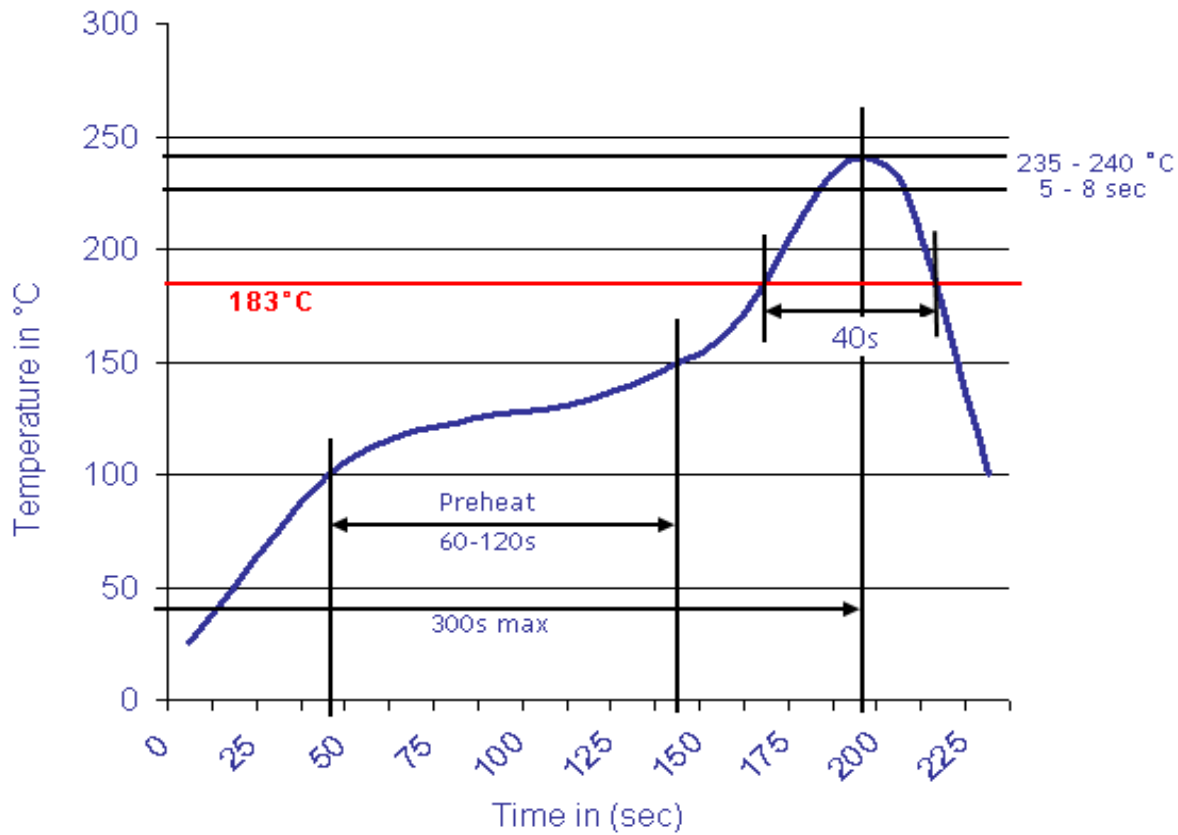
Customer:

DRW:	Jason	CHKD	Wilson	MATL:	Wilson	TOLERANCE	Mason	DATE	19.02.2012
APPD:	Schumi			FINISH	Jamy		Sheet No.		4 from 5



**Soldering Profile Curve**

**Classification Reflow Profile (JEDEC J-STD-020C)**



<b>DIN 41617 Connector Female Type</b>	
Part No.:	<b>T22006</b>
Customer:	

DRW:	Jason	CHKD	Wilson	MATL:	Wilson	TOLERANCE	Mason	DATE	19.02.2012
APPD:	Schumi			FINISH	Jamy		Sheet No.	5 from 5	

