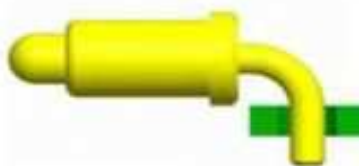


# EDCON-COMPONENTS



## Technical Discription

## Drawing

### Material:

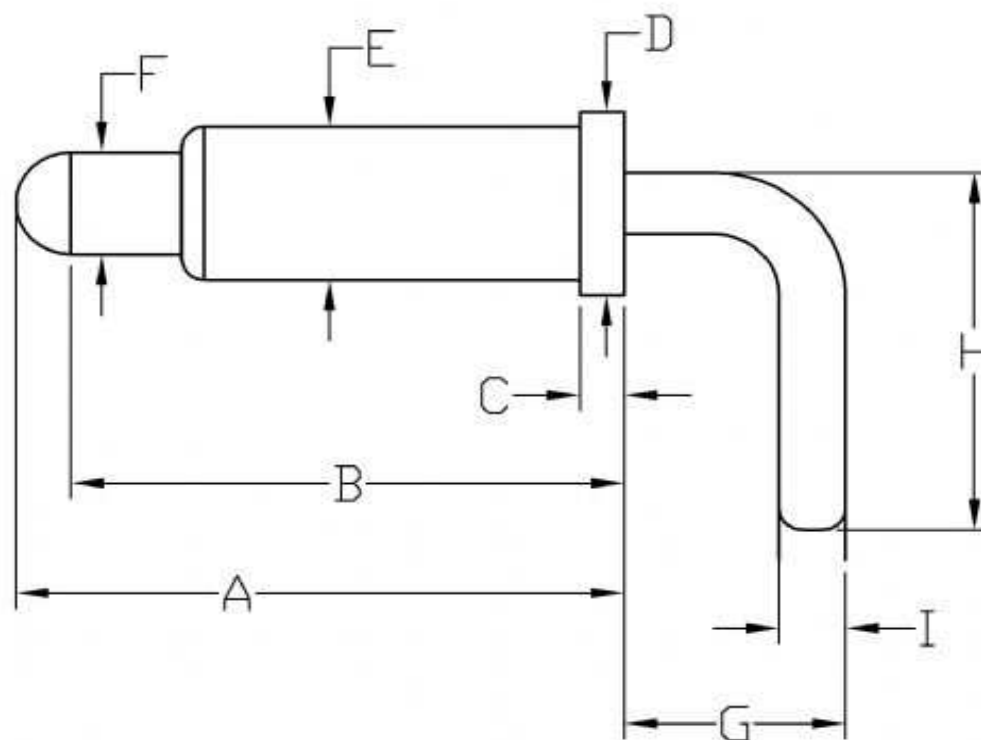
Plunger: Brass C3604 Au 20 $\mu$  over Ni  
 Barrel: Brass C3604 Au 20 $\mu$  over Ni  
 Spring: SUS 304 Au over Ni

### Mechanical:

Spring force: look table  
 Working stroke: look table  
 Life Test: 10.000~ 100.000 cycles

### Electrial:

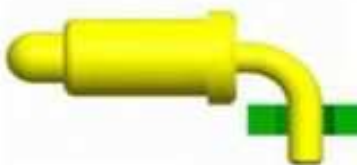
Rated Current & Voltage: DC 12V ; 1A ~ 5A max.  
 Contact Resistance: 30milliohm max.



<b>THT POGO PIN CONNECTOR</b>	
<b>Right Angle</b>	
Part No.:	<b>TA23A301</b>
Customer:	

DRW:	Jason	CHKD	Wilson	MATL:	Wilson	TOLERANCE	Mason	DATE	12.04.2014
APPD:	Schumi			FINISH	Jamy		Sheet No.		1 from 4

# EDCON-COMPONENTS

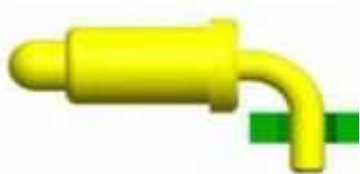


Order Code	A	B	C	D	E	F	G	H	I	working stroke	Spring force (gr)
A01	6,80	4,80	0,80	1,50	3,00	2,00	1,85	5,50	0,70	1,50	250

<b>THT POGO PIN CONNECTOR</b>	
<b>Right Angle</b>	
Part No.:	<b>TA23A301</b>
Customer:	

DRW:	Jason	CHKD	Wilson	MATL:	Wilson	TOLERANCE	Mason	DATE	12.04.2014
APPD:	Schumi			FINISH	Jamy		Sheet No.	2 from 4	

# EDCON-COMPONENTS



## Ordering Informations

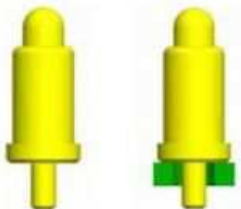
Serie	Order Code	Special	Contact Plating	Special	ROHS	Packing				
-------	------------	---------	-----------------	---------	------	---------	--	--	--	--

TA23A301	-	A01	X	020	X	R	BU			
----------	---	-----	---	-----	---	---	----	--	--	--

A01= Size look table	X=no function	020= 20µ AU	X=no function	R= ROHS Conform	BU= Bulk-Ware TR= Tape Reel
				N= NON ROHS Conform	

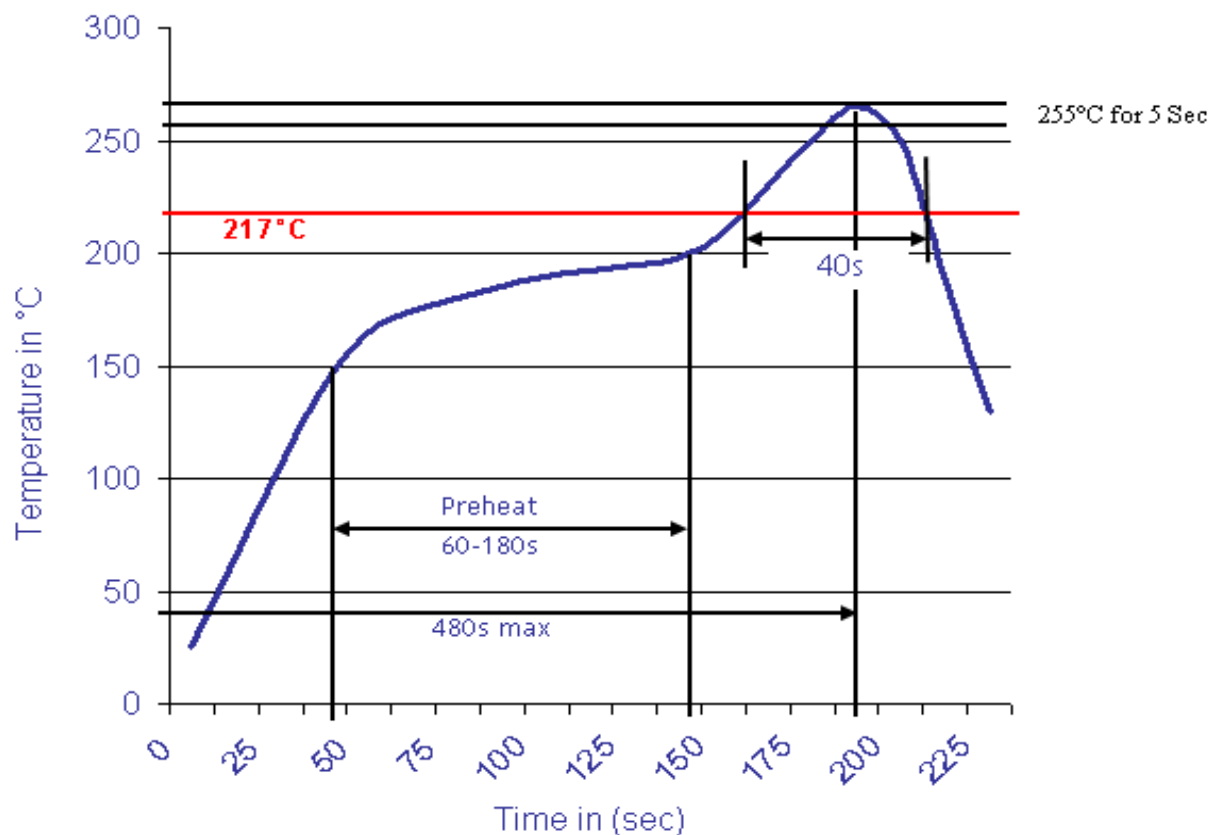
<b>THT POGO PIN CONNECTOR Right Angle</b>	
Part No.:	<b>TA23A301</b>
Customer:	

DRW:	Jason	CHKD	Wilson	MATL:	Wilson	TOLERANCE	Mason	DATE	12.04.2014
APPD:	Schumi			FINISH	Jamy			Sheet No.	3 from 4



Soldering Profile Curve

Classification Reflow Profile (JEDEC J-STD-020C)



<b>THT POGO PIN CONNECTOR</b>	
<b>Right Angle</b>	
Part No.:	<b>TA23A301</b>
Customer:	

DRW:	Jason	CHKD	Wilson	MATL:	Wilson	TOLERANCE	Mason	DATE	12.04.2014
APPD:	Schumi			FINISH	Jamy		Sheet No.	4 from 4	