

EDCON-COMPONENTS



Description



Modular-cable assembly	
Part No.:	T68020
Customer:	

DRW:	Jason	CHKD	Wilson	MATL:	Wilson	TOLERANCE	Mason	DATE	31.03.2016
APPD:	Schumi			FINISH	Jamy		Sheet No.	1 from 3	

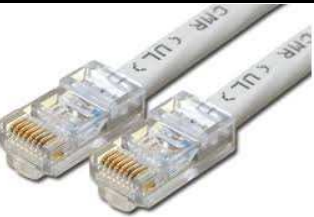
www.edcon-components.com

email: info@edcon-components.com

EDCON-COMPONENTS



Plug Type A Short Body



Cover Type 1



Round Cable



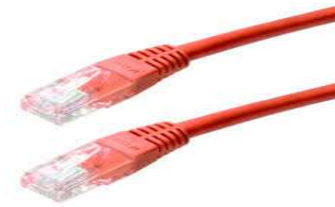
Unshielded Plug



Plug Type B Long Body



Cover Type 2 (molded)



Flat Cable



Shielded Plug



Cover Type 3



Modular-cable assembly

Part No.: **T68020**

Customer:

DRW:	Jason	CHKD	Wilson	MATL:	Wilson	TOLERANCE	Mason	DATE	31.03.2016
APPD:	Schumi			FINISH	Jamy		Sheet No.	2 from 3	

EDCON-COMPONENTS



Ordering Informations

Serie	Cable Type	Length of cable (mm)	Cable Color	Assembly Type	Plug type	Plug Type	Cover type	Cable Type	Cable	ROHS	Packing
-------	------------	----------------------	-------------	---------------	-----------	-----------	------------	------------	-------	------	---------

T68020	-	A	1002	GY	M	A	S	0	S	R	R	BU
---------------	---	----------	-------------	-----------	----------	----------	----------	----------	----------	----------	----------	-----------

A= CAT 5	1002= 1000mm	GY = Gray	M= Molded Cable Type	A= Short Body	S= Shielded Plug	0= without Cover	S= Shielded Cable	R= Round Cable	R= ROHS Conform	BU= Bulk - Ware
B= CAT 6		BL = Blue	A= Assembly Cable Type	B= Long Body		1= with Cover Type 1				
		RD = Red				2= with Cover Type 2				
		YE = Yellow			3= with Cover Type 3				IV= Individual Packing	
		BK = Black								

Modular-cable assembly

Part No.: **T68020**

DRW:	Jason	CHKD	Wilson	MATL:	Wilson	TOLERANCE	Mason	DATE	31.03.2016	Customer:
APPD:	Schumi			FINISH	Jamy		Sheet No.	3 from 3		

www.edcon-components.com

email: info@edcon-components.com

