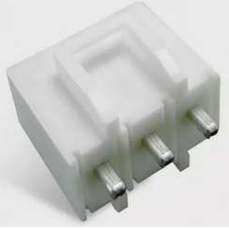


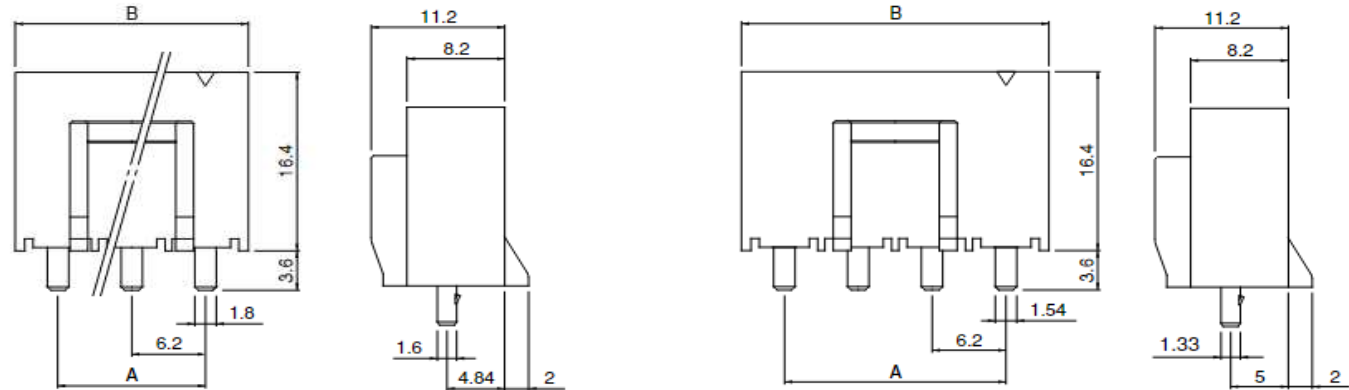
EDCON-COMPONENTS



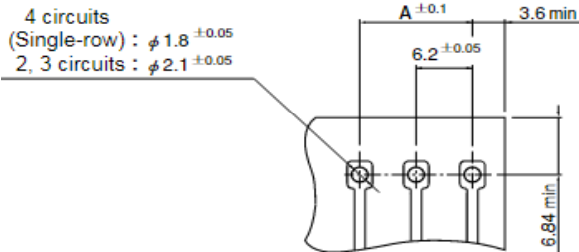
Technical Discription

Curent Rating: 20A
 Contact Resistance: 10mΩ max.
 Voltage Rating: 600V AC/DC
 Withstanding Voltage: 2000VAC/ DC
 Insulation Resistance: 1000MΩ Min
 Operating Temperature: -25°C to + 90°C
 Contact Material: Copper-alloy
 Contact Plating: Tin plated
 Insulator Material: Nylon PA66 UL94V-0
 Material Colour: Natural

Drawing



PCB Layout (mm)

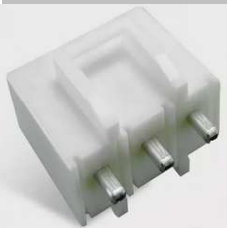


**Wire to Board Connector
 (Wafer) Straight Pin Pitch
 6,20mm**

DRW:	Jason	CHKD	Wilson	MATL:	Wilson	TOLERANCE	Mason	DATE	22.08.2022
APPD:	Schumi			FINISH	Jamy		Sheet No.	1 from 4	

Part No.:	T68B001
Customer:	

EDCON-COMPONENTS



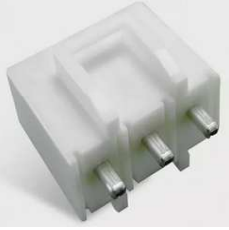
Ordering Informations

Serie	No. Of Position	Contact Plating	Contact Material	Color of Body	Special Function	Special Function	ROHS	Packing		
T68B001	02	TN	BR	NA	N	N	R	BU		

02= 2Pos.	TN= tinned	BR= Brass		N= No Function	N= No Function	R= ROHS Conform	BU= Bulk-Ware
02 ~ 12Pos.		PB= Phosphor Bronze				N= NON ROHS Conform	TU= Tube Packing
							TC= Tube w. Cap Packing
							TR= Tape/Reel Packing w. Cap w. needed
							IV= Individual Packing
			NA= Nature				

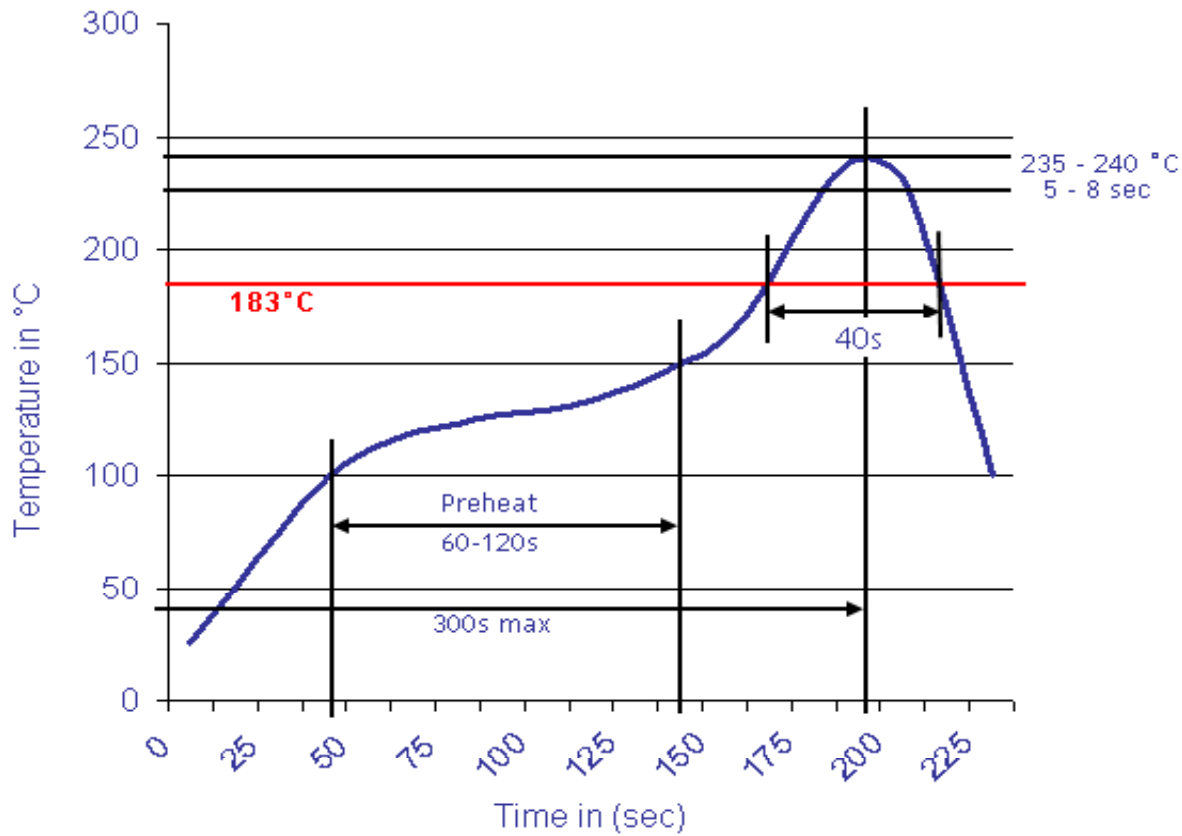
Wire to Board Connector (Wafer) Straight Pin Pitch 6,20mm	
Part No.:	T68B001
Customer:	

DRW:	Jason	CHKD	Wilson	MATL:	Wilson	TOLERANCE	Mason	DATE	22.08.2022
APPD:	Schumi			FINISH	Jamy		Sheet No.		3 from 4



Soldering Profile Curve

Classification Reflow Profile (JEDEC J-STD-020C)



Wire to Board Connector (Wafer) Straight Pin Pitch 6,20mm	
Part No.:	T68B001
Customer:	

DRW:	Jason	CHKD	Wilson	MATL:	Wilson	TOLERANCE	Mason	DATE	22.08.2022
APPD:	Schumi			FINISH	Jamy		Sheet No.	4 from 4	