



DATA SHEET

BNC-Female Right angle

Serie: T55S1130

BNC-Female Right angle

Serie No.: **T55S1130**

DRW:	Jason	CHKD	Wilson	MATL:	Wilson	TOLERANCE	Mason	DATE	21.12.2012
APPD:	Schumi			FINISH	Jamy		Sheet No.		1 from 6

Customer:

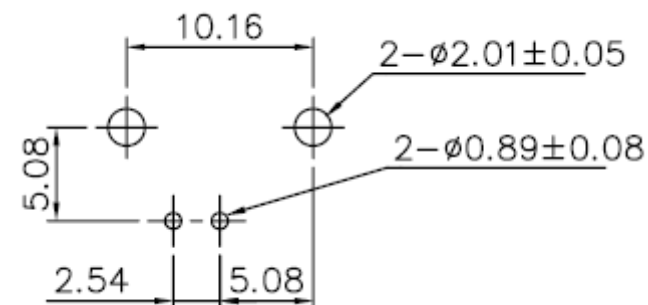
EDCON-COMPONENTS



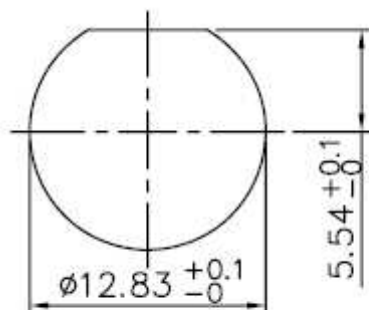
Specifications

1= Center Contact	Phosphor Bronze Gold Plating
2= Body	Zinc Alloy Nickel Plating
3= Insulator	PE-606
4= Mounting Post	Brass Tin Plated
5= Solder Tail	Brass Wire Tin Plating

PCB Layout



Front Panel Informations



RECOMMENDED MOUNTING HOLE
MAXIMUM PANEL THICKNESS: 5.5MM

BNC-Female Right angle

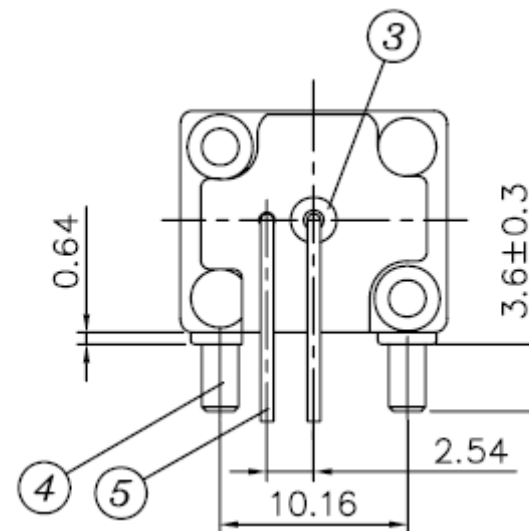
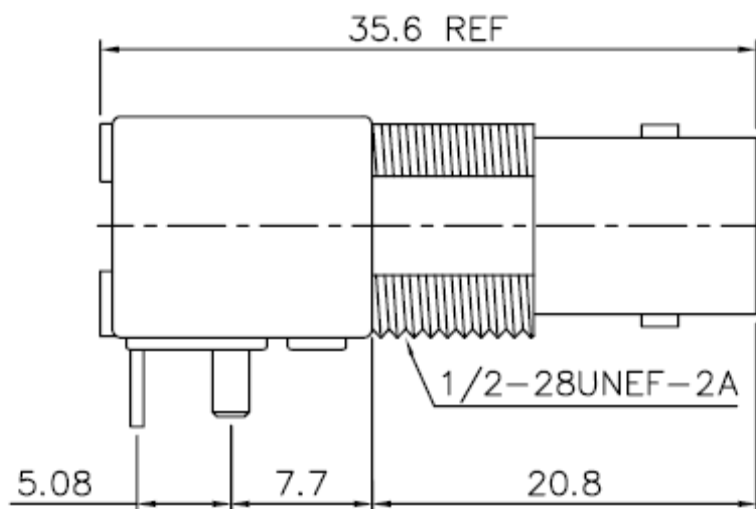
Part No.: **T55S1130**

DRW:	Jason	CHKD	Wilson	MATL:	Wilson	TOLERANCE	Mason	DATE	21.12.2012	Customer:
APPD:	Schumi			FINISH	Jamy		Sheet No.	2 from 6		

www.edcon-components.com

email: info@edcon-components.com

EDCON-COMPONENTS



BNC-Female Right angle

Part No.: T55S1130

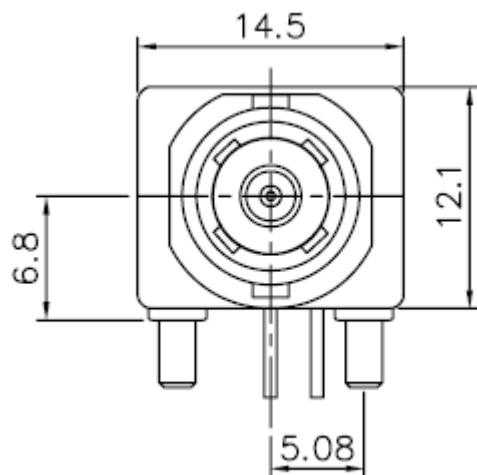
Customer:

DRW:	Jason	CHKD	Wilson	MATL:	Wilson	TOLERANCE	Mason	DATE	21.12.2012
APPD:	Schumi			FINISH	Jamy		Sheet No.	3 from 6	

www.edcon-components.com

email: info@edcon-components.com

EDCON-COMPONENTS



BNC-Female Right angle

Part No.: **T55S1130**

DRW:	Jason	CHKD	Wilson	MATL:	Wilson	TOLERANCE	Mason	DATE	21.12.2012
APPD:	Schumi			FINISH	Jamy		Sheet No.	4 from 6	

Customer:
email: info@edcon-components.com

www.edcon-components.com

EDCON-COMPONENTS



Ordering Informations

Serie	Range	Housing	Front mounting	Special function	ROHS	Packing Code				
-------	-------	---------	----------------	------------------	------	--------------	--	--	--	--

T55S1130	50	CR	A	0	R	BU				
-----------------	-----------	-----------	----------	----------	----------	-----------	--	--	--	--

50= 50 Ohm	CR= Chromatic	A= w/o Screw and Nut	0= no special function	R= ROHS Conform	BU= Bulk Ware
75= 75 Ohm	BK= Black	B= with Screw and Nut		N= NON ROHS Conform	TY= TRAY Packing
	WH= White				IV= Individual Packing
	ME= Full Metall Body (Zinc)	C= with Screw and Nut mounting			

BNC-Female Right angle

Part No.: **T55S1130**

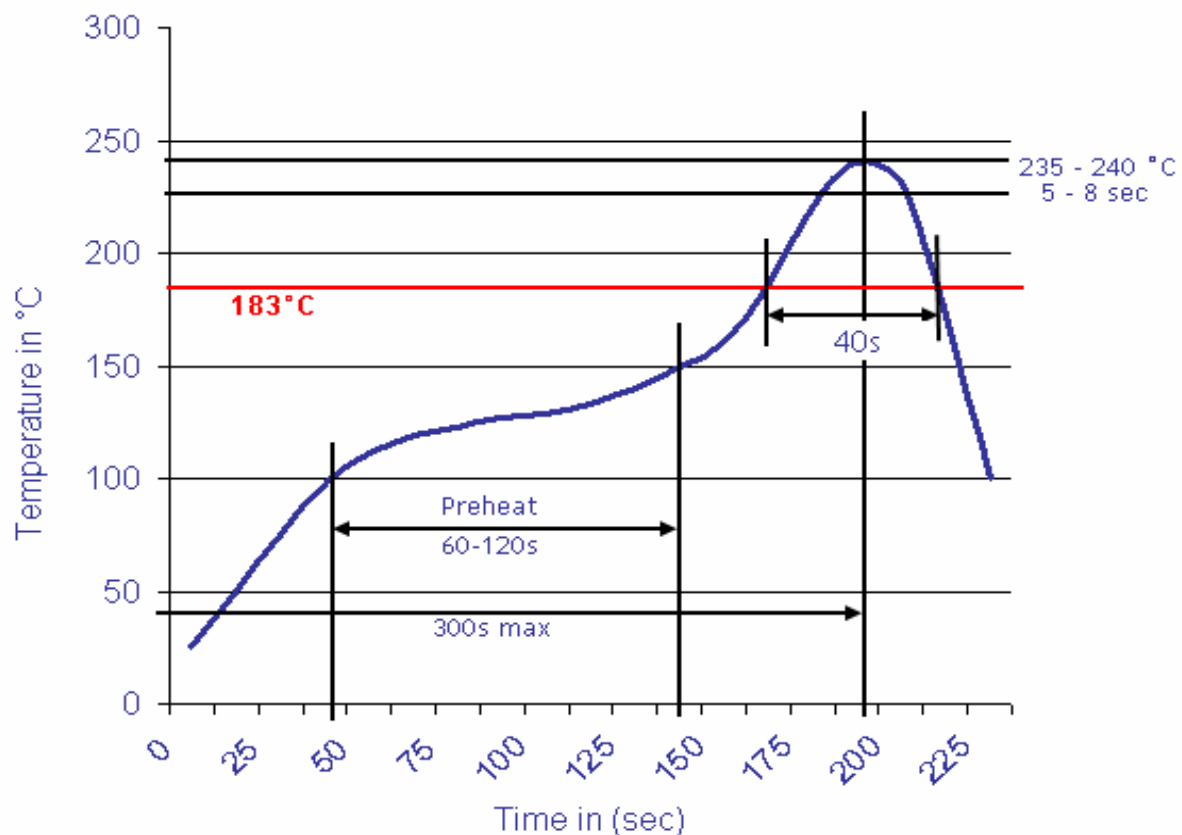
Customer:

DRW:	Jason	CHKD	Wilson	MATL:	Wilson	TOLERANCE	Mason	DATE	21.12.2012
APPD:	Schumi			FINISH	Jamy		Sheet No.		5 from 6



Soldering Profile Curve

Classification Reflow Profile (JEDEC J-STD-020C)



BNC-Female Right angle

Part No.: **T55S1130**

DRW:	Jason	CHKD	Wilson	MATL:	Wilson	TOLERANCE	Mason	DATE	21.12.2012
APPD:	Schumi			FINISH	Jamy		Sheet No.	6 from 6	Customer: