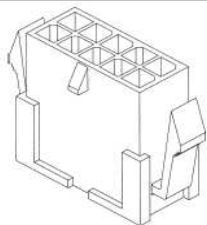


EDCON-COMPONENTS

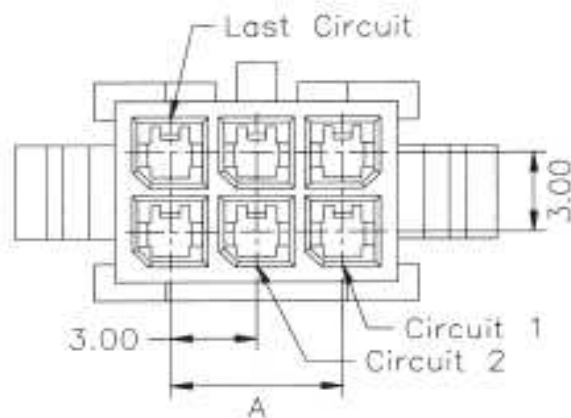
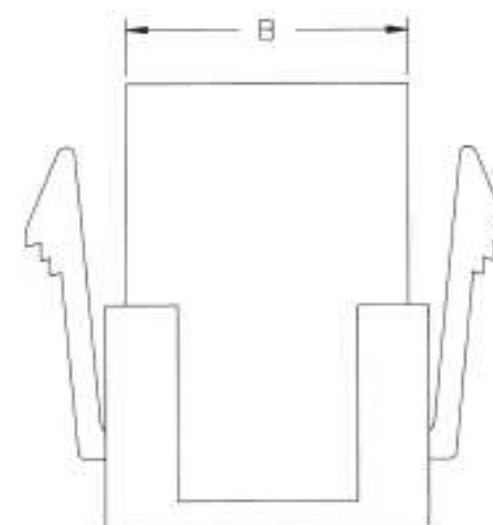
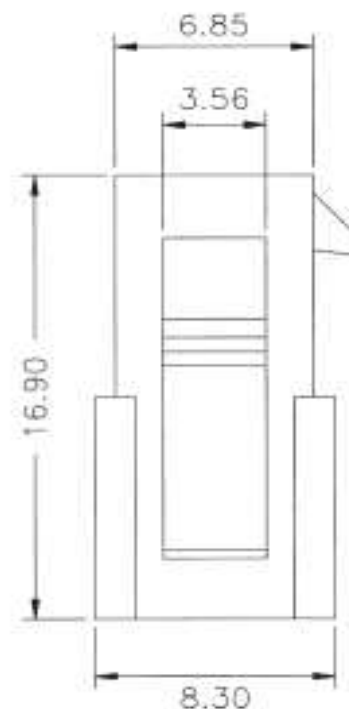


Technical Discription

Drawing

Voltage Rating: 150 VAC / DC
 Curent Rating: 5A AC/DC
 Withstanding Voltage: 1500VAC/ minute
 Insulation Resistance: 1000M Ω min
 Temperature Range: - 25°C ~ + 85°C
 Contact Resistance: 20m Ω max.

 Housing Material: Nylon 66, UL94V-2



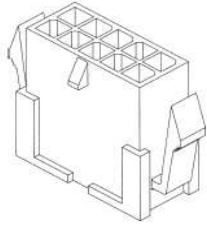
**Mikro Fit Male Connector
Dual Row**

Part No.: **T48004**

Customer:

DRW:	Jason	CHKD	Wilson	MATL:	Wilson	TOLERANCE	Mason	DATE	07.10.2015
APPD:	Schumi			FINISH	Jamy		Sheet No.	1 from 3	

EDCON-COMPONENTS



Dimensions

Number of Positions

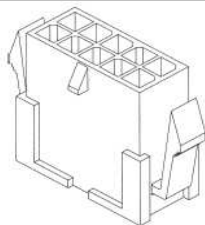
Pos.	A	B
2x1P	---	3,85
2x2P	3,00	6,85
2x3P	6,00	9,85
2x4P	9,00	12,85
2x5P	12,00	15,85
2x6P	15,00	18,85
2x7P	18,00	21,85
2x8P	21,00	24,85
2x9P	24,00	27,85
2x10P	27,00	30,85
2x11P	30,00	33,85
2x12P	33,00	36,85

**Mikro Fit Male Connector
Dual Row**

Part No.: **T48004**

DRW:	Jason	CHKD	Wilson	MATL:	Wilson	TOLERANCE	Mason	DATE	07.10.2015	Customer:
APPD:	Schumi			FINISH	Jamy		Sheet No.	2 from 3		

EDCON-COMPONENTS



Ordering Informations

Serie	No. Of Position	Special function	Color of Body	ROHS	Packing					
-------	-----------------	------------------	---------------	------	---------	--	--	--	--	--

T48004	XX	N	BK	R	BU					
---------------	-----------	----------	-----------	----------	-----------	--	--	--	--	--

XX= xxPos. look table	N= No function	BK= Black	R= ROHS Conform	BU= Bulk- Ware
				IV= Individual Packing

**Mikro Fit Male Connector
Dual Row**

Part No.: **T48004**

DRW:	Jason	CHKD	Wilson	MATL:	Wilson	TOLERANCE	Mason	DATE	07.10.2015
APPD:	Schumi			FINISH	Jamy		Sheet No.		2 from 3

Customer: