

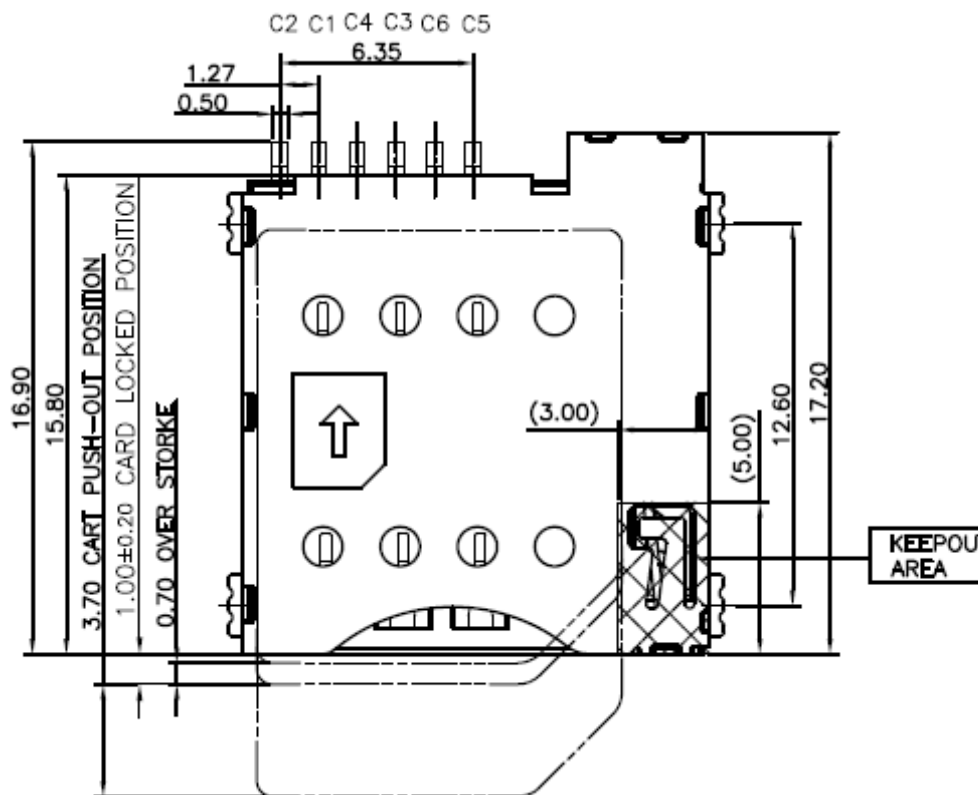
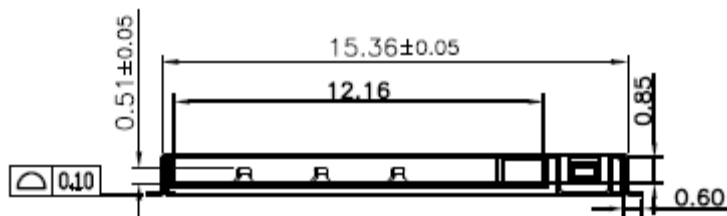
EDCON-COMPONENTS



Specifications

Voltage Rating:	100V DC
Current Rating:	0,5A
Operating Temperature:	-.25°C ~ +85°C
Contact Resistance:	100mΩ max.
Withstanding Voltage:	500V AC/1Minute
Insulation Resistance:	100MΩ min.
Material Housing:	HIGH- TEMPERATURE PLASTIC UL94V-0 Black
Contact Material:	Phosphor Bronze
Contact Plating:	Gold Plated over Nickel
Shell:	Stainless Steel
Mechanical Characteristics:	Lifetime: 5000cycles
Contact normal forces:	80gf. Min
Mating / Unmating forces:	10N (1,02kgf) max.

Drawing (dimensions all into mm)



**SIM-CARD Serie 6P
H=1,8mm Push/Push**

Part No.: **T39003**

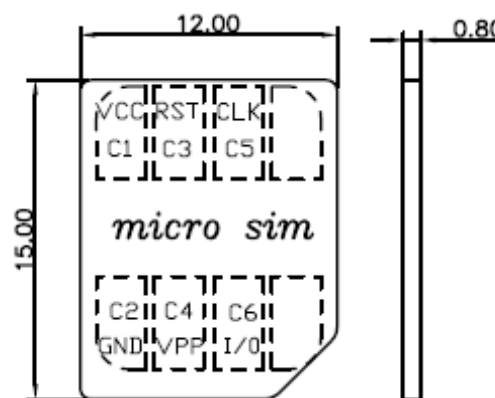
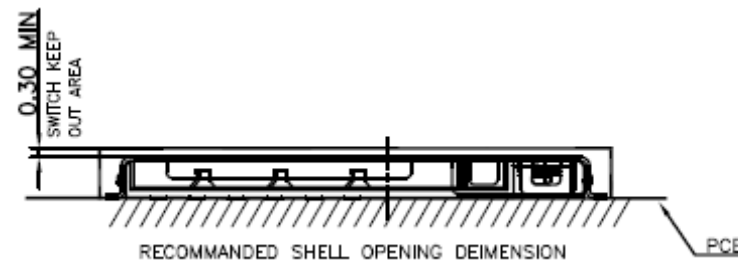
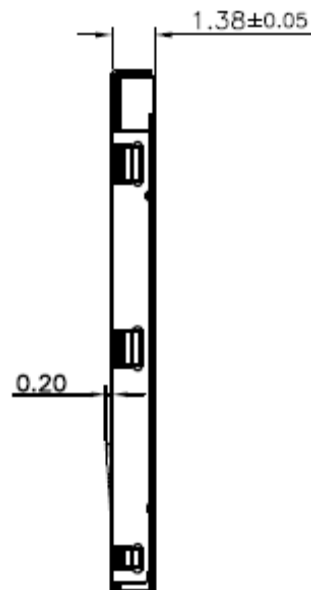
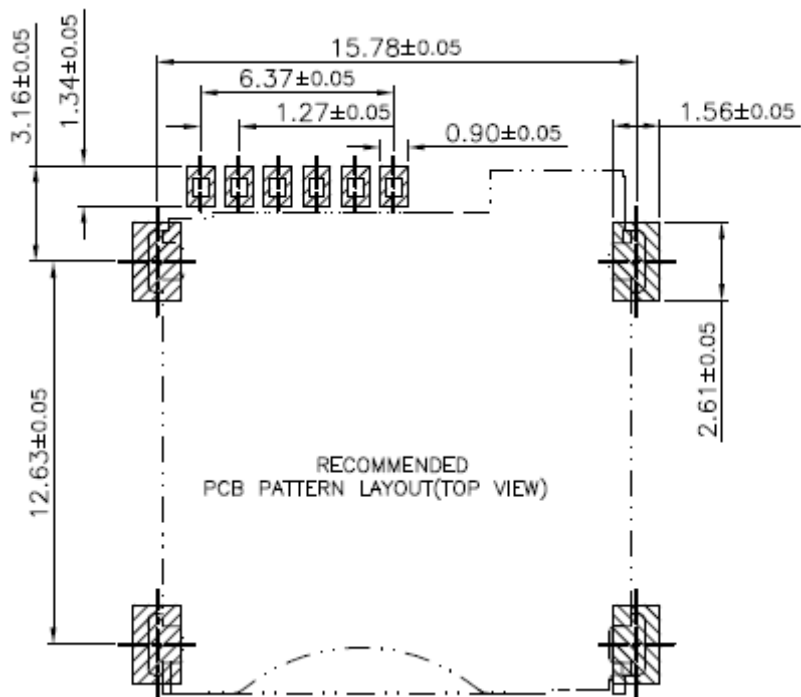
Customer:

DRW:	Jason	CHKD	Wilson	MATL:	Wilson	TOLERANCE	Mason	DATE	11.02.2018
APPD:	Schumi			FINISH	Jamy		Sheet No.		1 from 4



Dimension Information about Housing

PCB Layout



SIM-CARD Serie 6P	
H=1,8mm Push/Push	
Part No.:	T39003
Customer:	

DRW:	Jason	CHKD	Wilson	MATL:	Wilson	TOLERANCE	Mason	DATE	11.02.2018
APPD:	Schumi			FINISH	Jamy		Sheet No.	2 from 4	

EDCON-COMPONENTS



Ordering Informations

Serie	Contact Plating	Body Colour	special Function	special Function	special Function	ROHS	Packing			
-------	-----------------	-------------	------------------	------------------	------------------	------	---------	--	--	--

T39003	GF	BK	N	N	N	Y	TY			
---------------	-----------	-----------	----------	----------	----------	----------	-----------	--	--	--

GF= Gold Flash 1μ	BK= Black	N= No Function	N= No Function	N= No Function	Y= ROHS Conform	TR= TAPE REEL Packing	TY= TRAY Packing			
GA= Gold Flash 3μ										
GB= Gold Flash 5μ										
GC= Gold Flash 10μ										
GD= Gold Flash 15μ										
GE= Gold Flash 20μ										
							IV= Individual Packing			

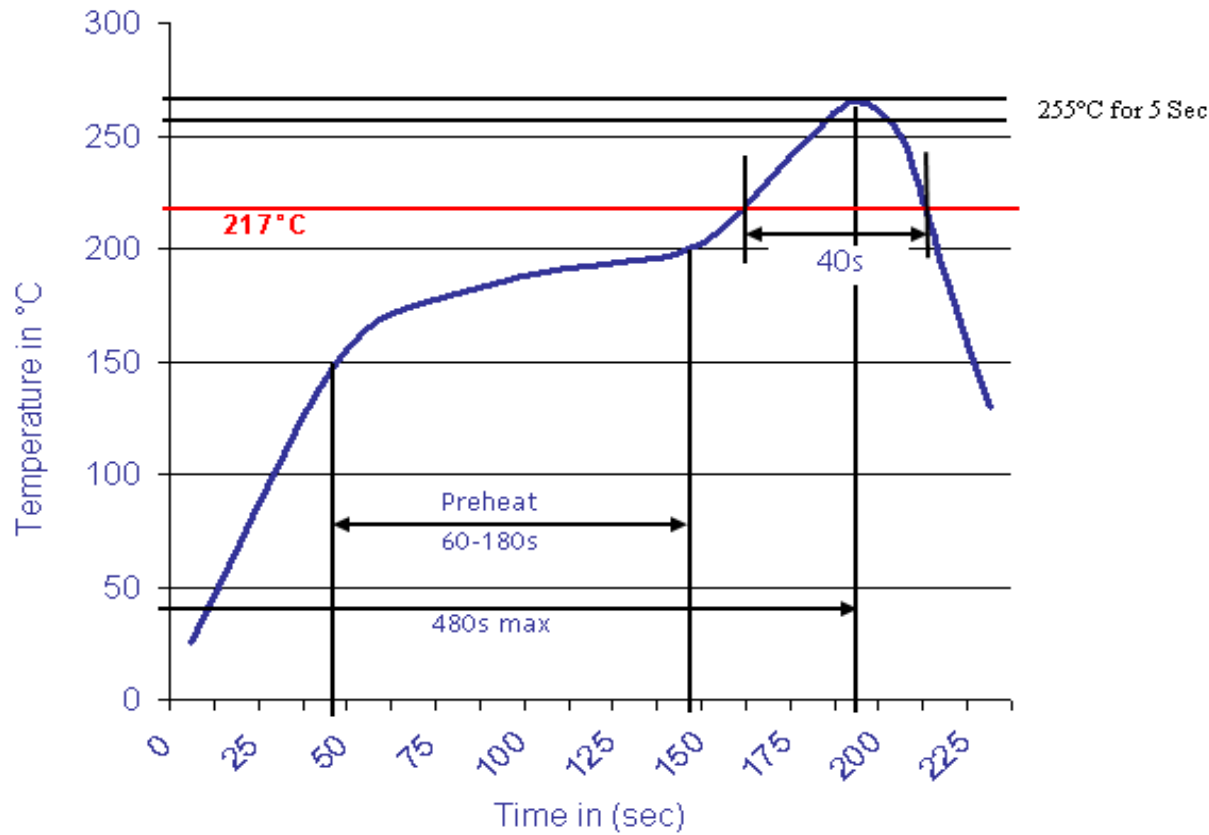
SIM-CARD Serie 6P H=1,8mm Push/Push
Part No.: T39003
Customer:

DRW:	Jason	CHKD	Wilson	MATL:	Wilson	TOLERANCE	Mason	DATE	11.02.2018
APPD:	Schumi			FINISH	Jamy			Sheet No.	3 from 4



Soldering Informations

Classification Reflow Profile (JEDEC J-STD-020C)



SIM-CARD Serie 6P H=1,8mm Push/Push	
Part No.:	T39003
Customer:	

DRW:	Jason	CHKD	Wilson	MATL:	Wilson	TOLERANCE	Mason	DATE	11.02.2018
APPD:	Schumi			FINISH	Jamy		Sheet No.		4 from 4

