

EDCON-COMPONENTS

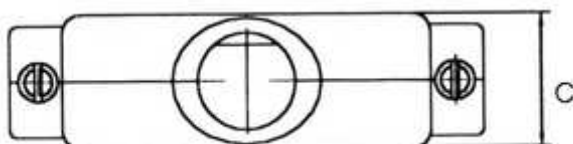


Description

Material: Plastic UL94V-0
 Finished: Chromate plated / or Black color
 Cable entry: 180°
 Screw Size: UNC-4-40
 Screw type: Short / Long screw

Dimensions (mm)

D-SUB	HD-D-Sub	A	B	C	Dia.Cable max.
9	15	31,0	31,5	15,2	8,5
15	26	35,0	40,0	15,2	8,5
25	44	38,0	53,5	15,2	11,0
37	62	40,0	70,0	15,2	11,0
50	78	40,0	67,5	18,2	12,0



**9 to 50 Pos Pos. Plastic Hood
 Cable Entry 180°**

Part No.: **T31022**

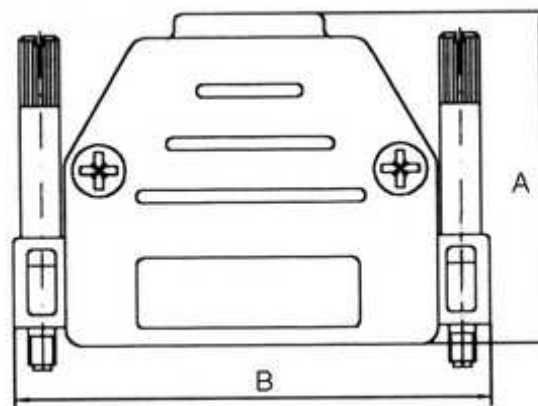
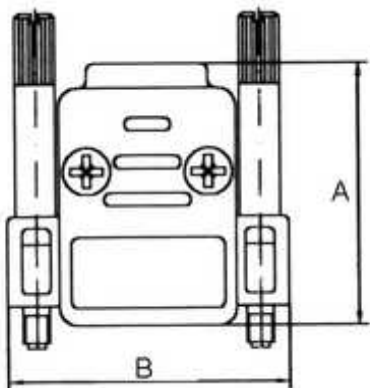
DRW:	Jason	CHKD	Wilson	MATL:	Wilson	TOLERANCE	Mason	DATE	23.02.2016
APPD:	Schumi			FINISH	Jamy		Sheet No.	1 from 3	

Customer:

EDCON-COMPONENTS



Hardware of D-Sub Hood



9 to 50 Pos Pos. Plastic Hood Cable Entry 180°	
Part No.:	T31022
Customer:	

DRW:	Jason	CHKD	Wilson	MATL:	Wilson	TOLERANCE	Mason	DATE	23.02.2016
APPD:	Schumi			FINISH	Jamy		Sheet No.	2 from 3	

www.edcon-components.com

email: info@edcon-components.com

EDCON-COMPONENTS



Ordering Informations

Serie	Pos.	surface	Srew Type	ROHS	Packing					
-------	------	---------	-----------	------	---------	--	--	--	--	--

T31022	xx	BK	S	R	1					
---------------	-----------	-----------	----------	----------	----------	--	--	--	--	--

xx= D-Sub-Pos	BK= Black Color	L= Long Screws	R= ROHS Conform	1= Mix Packing
	CR= Chromatic Plated	S= Slotted Screw Short	N= NON ROHS Conform	

**9 to 50 Pos Pos. Plastic Hood
Cable Entry 180°**

Part No.: **T31022**

DRW:	Jason	CHKD	Wilson	MATL:	Wilson	TOLERANCE	Mason	DATE	23.02.2016
APPD:	Schumi			FINISH	Jamy		Sheet No.		3 from 3

Customer:

www.edcon-components.com

email: info@edcon-components.com