

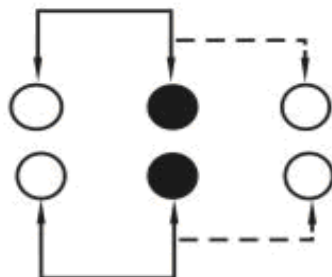
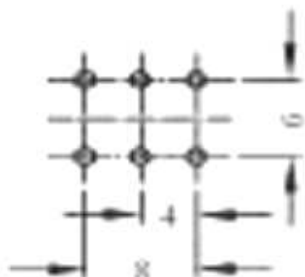
EDCON-COMPONENTS



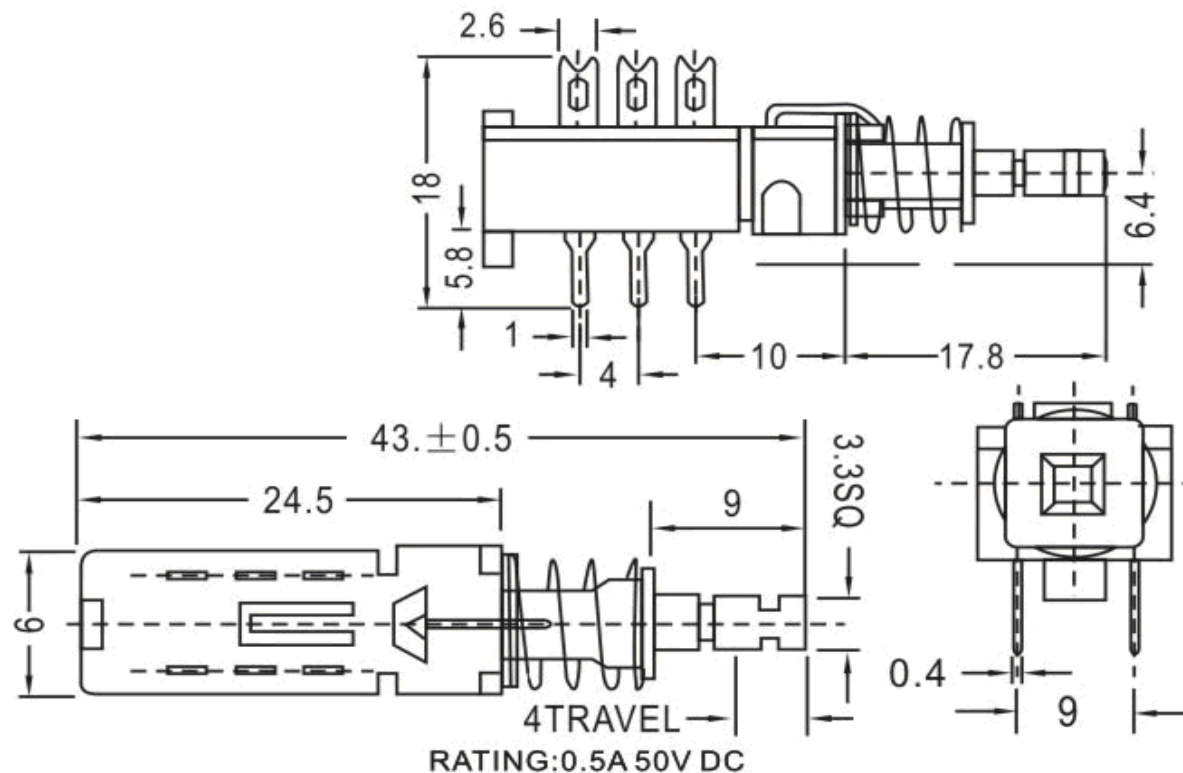
SPECIFICATION:

Current Rating:	3 Ampere
Voltage Rating:	50VDC
Insulator Resistance:	5000 Megaohm min.
Dielectric Withstanding:	AC 1000V
Operating Temperature:	.-40°C to +105°C
Contact Material:	Copper, Alloy
Insulator Material:	Polyester, UL 94V-0
Standard:	P.B.T.
Contact Plating:	Tin, Gold or Selective Plated
Standard:	Gold Flash Overall
Function:	2P2T

P.C.B Layout



Drawing



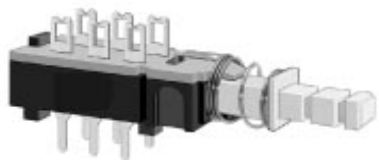
Push Switch

Part No.: **Q59004**

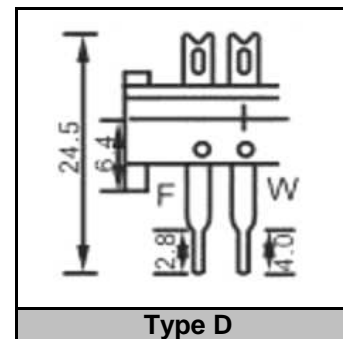
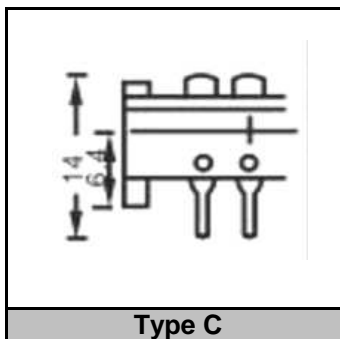
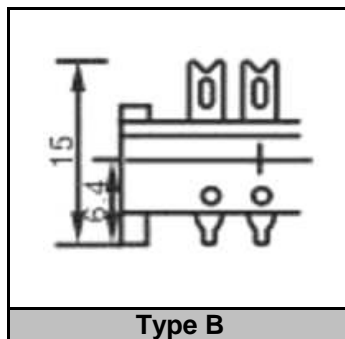
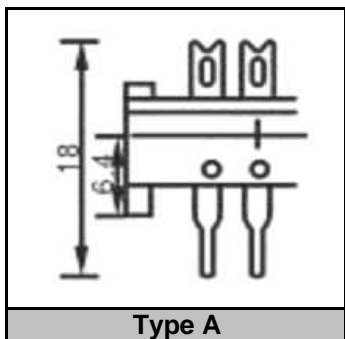
Customer:

DRW:	Jason	CHKD	Wilson	MATL:	Wilson	TOLERANCE	Mason	DATE	12.05.2014
APPD:	Schumi			FINISH	Jamy		Sheet No.	1 from 4	

EDCON-COMPONENTS



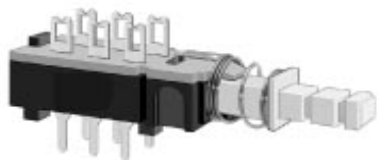
Terminal Style



Push Switch	
Part No.:	Q59004
Customer:	

DRW:	Jason	CHKD	Wilson	MATL:	Wilson	TOLERANCE	Mason	DATE	12.05.2014
APPD:	Schumi			FINISH	Jamy		Sheet No.	2 from 4	

EDCON-COMPONENTS



Ordering Informations

Serie	Switch function	Terminal Style	Contact Plating	Special function	ROHS	Packing				
Q59004	1	X	A	XX	R	BU				

1= NON Locked	A= Type A	A= Tinned	xx= No function	R= ROHS Confrom	BU= Bulk-Ware
2= Locked	B= Type B	B= Gold Flash		N= NON ROHS Confrom	IV= Individual Packing
	C= Type C				
	D= Type D				

Push Switch

Part No.: **Q59004**

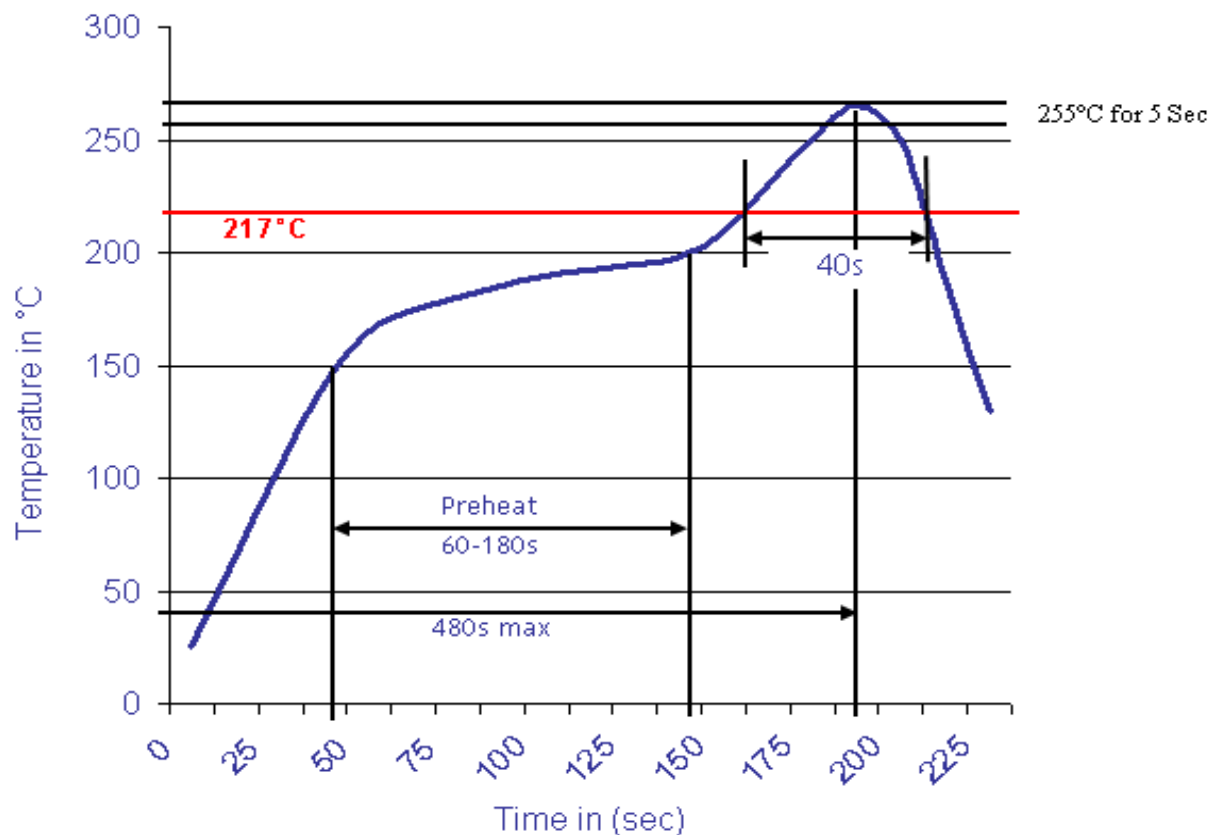
Customer:

DRW:	Jason	CHKD	Wilson	MATL:	Wilson	TOLERANCE	Mason	DATE	12.05.2014
APPD:	Schumi			FINISH	Jamy		Sheet No.		3 from 4



Soldering Profile Curve

Classification Reflow Profile (JEDEC J-STD-020C)



Push Switch	
Part No.:	Q59004
Customer:	

DRW:	Jason	CHKD	Wilson	MATL:	Wilson	TOLERANCE	Mason	DATE	12.05.2014
APPD:	Schumi			FINISH	Jamy		Sheet No.	1 from 4	