

# EDCON-COMPONENTS

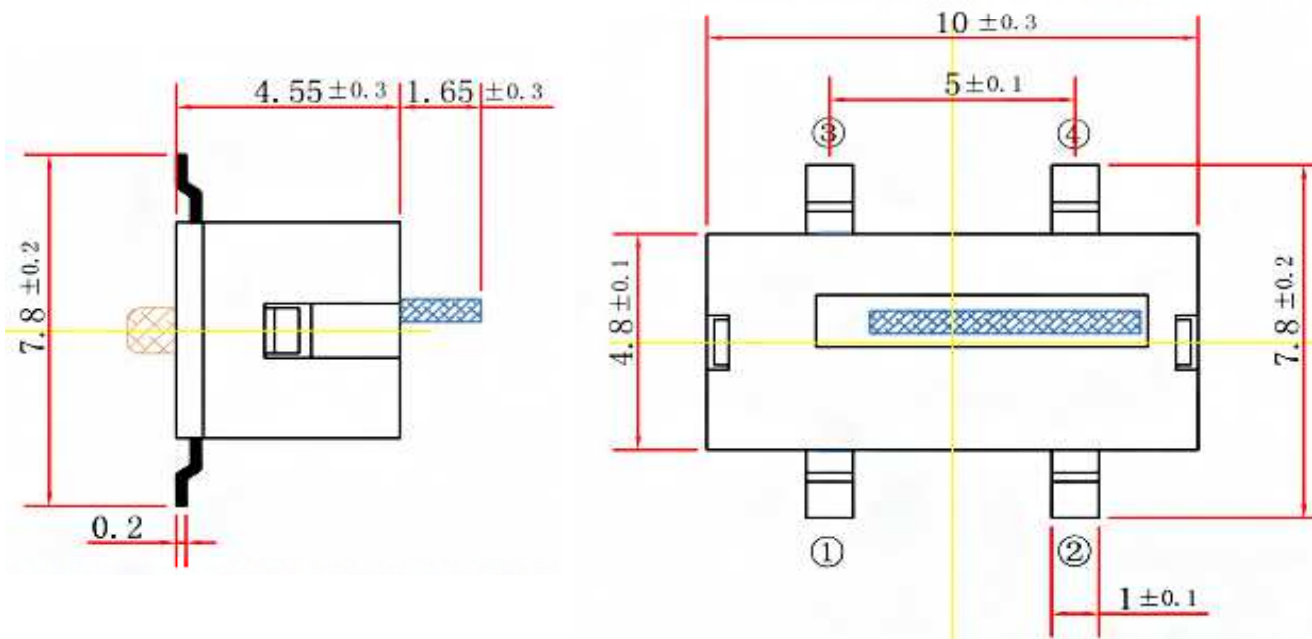
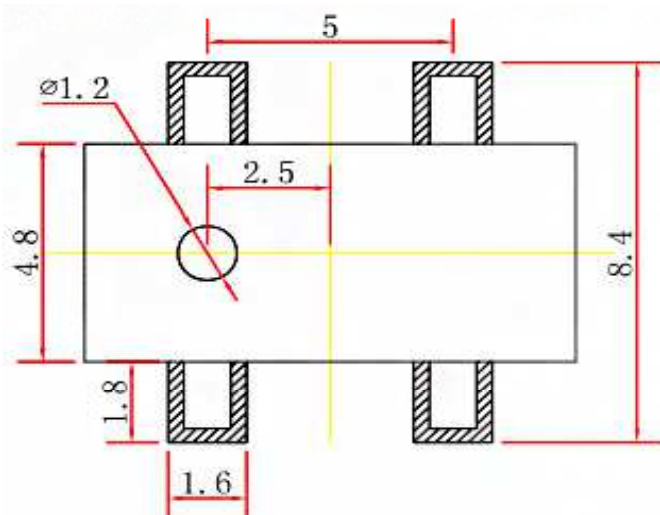


## SPECIFICATION:

Voltage Rating: 12VDC  
 Current Rating: 50mA  
 Mechanical Life: 500000 cycles  
 Contact Resistance: <200m Ω max. (initial)  
 Insulation Resistance: >100M Ω min. 500VDC  
 Dielectric Strength: 100VAC/1min.  
 Operating Temperature: -10°C ~ +60°C  
 Operating Force: <1,0N ( 100gr f)

## Drawing / Dimensions (mm)

### PCB-Layout TOP VIEW



Tolerances unless otherwise specified (mm)

x	x.x	x.xx	x.xxx	Angle
±	±	±	±	±3°
DRW:	Jason	CHKD	Wilson	MATL:
APPD:	Schumi			FINISH
				Wilson
				Jamy
				Mason
				DATE
				18.04.2021
				Sheet No.
				1 from 4

### SMT Detector Switch

Part No.: **Q22075**

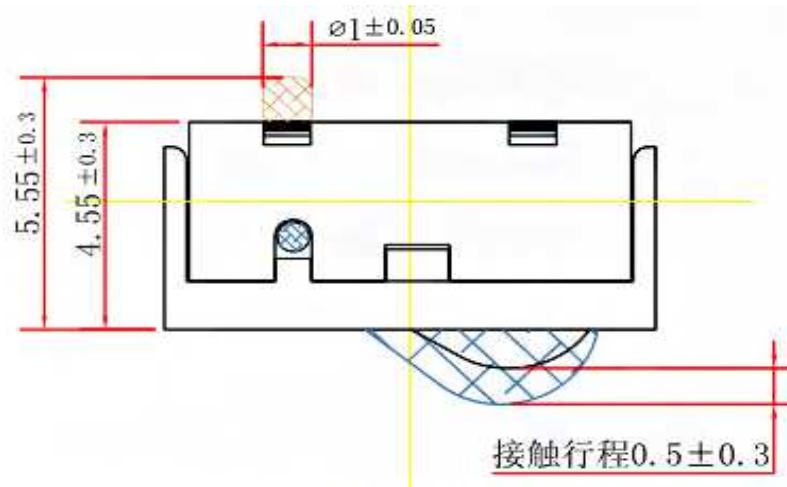
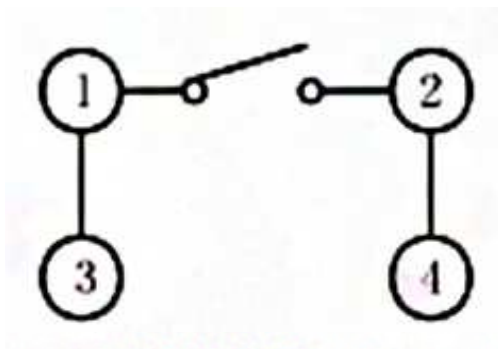
Customer:

# EDCON-COMPONENTS



Circuit

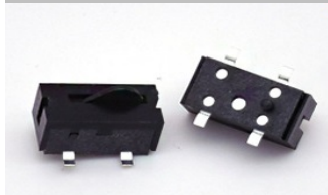
Drawing / Dimensions (mm)



<b>SMT Detector Switch</b>	
Part No.:	<b>Q22075</b>
Customer:	

DRW:	Jason	CHKD	Wilson	MATL:	Wilson	TOLERANCE	Mason	DATE	18.04.2021
APPD:	Schumi			FINISH	Jamy		Sheet No.	2 from 4	

# EDCON-COMPONENTS



## Ordering Informations

Serie	Total height w. Body	Fill with 0	Operating Force	Polarisation Peg	Electrical life	Cap Option	Cap Colour	Special function	ROHS	Packing
<b>Q22075</b>	<b>045</b>	<b>X</b>	<b>101</b>	<b>Y</b>	<b>503</b>	<b>N</b>	<b>N</b>	<b>N</b>	<b>R</b>	<b>TR</b>

<b>050</b> = 5,0mm	<b>X</b> = no function	<b>101</b> = 100gr	<b>N</b> = without Peg	<b>503</b> = 50000 Cycles	<b>N</b> = No Cap option	<b>N</b> = No Cap Option	<b>N</b> = No Function	<b>N</b> = Non ROHS	<b>TR</b> = Tape/Reel Packing
			<b>Y</b> = with Peg					<b>R</b> = ROHS conform	<b>TU</b> = Tube Packing
									<b>BU</b> = Bulk Ware

**SMT Detector Switch**

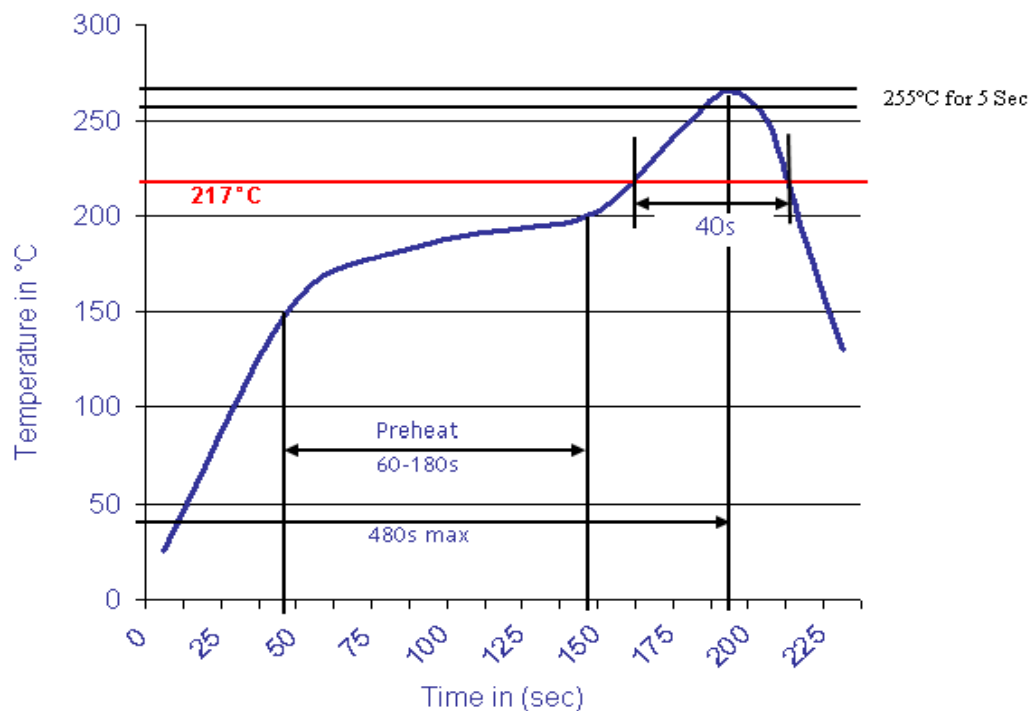
Part No.: **Q22075**

DRW:	Jason	CHKD	Wilson	MATL:	Wilson	TOLERANCE	Mason	DATE	18.04.2021
APPD:	Schumi			FINISH	Jamy		Sheet No.	3 from 4	Customer:



Soldering Profile Lead Free Curve

Classification Reflow Profile (JEDEC J-STD-020C)



**SMT Detector Switch**

Part No.: **Q22075**

Customer:

DRW:	Jason	CHKD	Wilson	MATL:	Wilson	TOLERANCE	Mason	DATE	18.04.2021
APPD:	Schumi			FINISH	Jamy		Sheet No.	4 from 4	