

EDCON-COMPONENTS



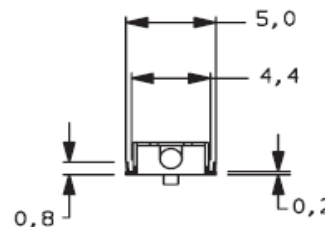
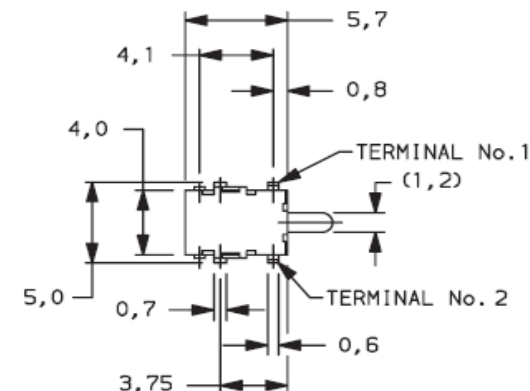
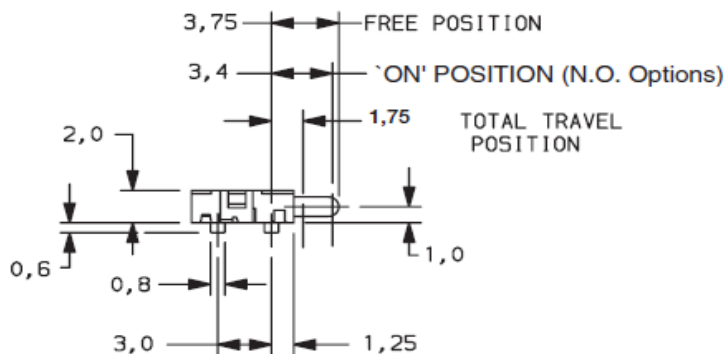
SPECIFICATION:

Circuit: SPST
 Function: Momentary
 Current Rating: 100mA
 Voltage Rating: 12 VDC
 Dielectric withstanding Volt: 250VAC for 1 minute
 Full Travel: 3,2mm (2,15mm)
 Insulation resistance: >100M Ω min.
 Operating Force: 40gr +/- 20gr max.
 Total travel: 0,25mm +/- 0,1mm
 Operating lifetime: 50000 cycles min.
 Operating Temperature: -30°C ~ +85°C

Material:
 Contact Material: Phosphor Bronze
 Contact Plating: silver or gold plated
 Contact resistance: 100mΩ max.
 Body: Glass filled LCP (UL94V-0)
 Actuator: Glass filled LCP (UL94V-0)
 Terminals: Phosphor Bronze

Illuminated: No
 Illuminated colors: look order code

Drawing / Dimension (mm)



Tolerances unless otherwise specified (mm)				
x	x.x	x.xx	x.xxx	Angle
±	±	±	±	±3°
DRW:	Jason	CHKD	Wilson	MATL: Wilson
APPD:	Schumi		FINISH	Jamy
			TOLERANCE	Mason
			DATE	17.03.2021
			Sheet No.	1 from 4

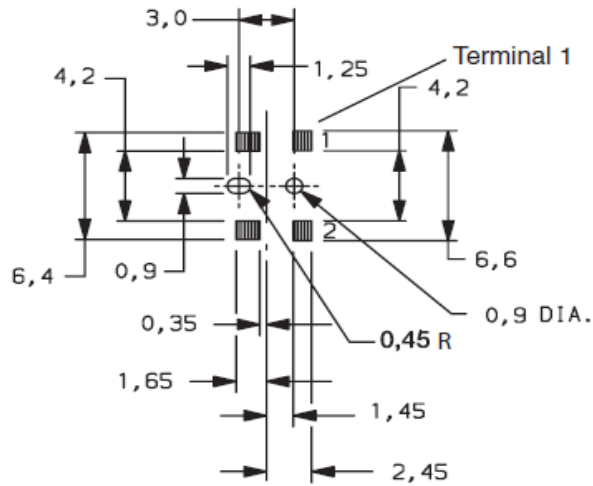
SMD Detector SWITCH	
Part No.:	Q22015
Customer:	

EDCON-COMPONENTS



P.C.B Layout (mm)

Circuit



SMD Detector SWITCH

Part No.: **Q22015**

Customer:

DRW:	Jason	CHKD	Wilson	MATL:	Wilson	TOLERANCE	Mason	DATE	17.03.2021
APPD:	Schumi			FINISH	Jamy		Sheet No.	2 from 4	

www.edcon-components.com

email: info@edcon-components.com

EDCON-COMPONENTS



Ordering Informations

Serie	Knob Type	Knob Height	Circuit	Solder Pin Length	Contact Plating	Special function F	Special function G	ROHS	Packing
Q22015	A0	B0	C0	D0	E0	F0	G0	R	BU

A0= No function	B0= No function	C0= No function	D0= No function	E0= Silver plated	F0= No function	G0= No function	R= ROHS conform	BU= Bulk Ware
				E1= Gold plated			N= Non ROHS	TY= Tray Packing
								TR102 = Tape/Reel
								IV= Individual Packing

SMD Detector SWITCH

Part No.: **Q22015**

DRW:	Jason	CHKD	Wilson	MATL:	Wilson	TOLERANCE	Mason	DATE	17.03.2021	Customer:
APPD:	Schumi			FINISH	Jamy		Sheet No.	3 from 4		

www.edcon-components.com

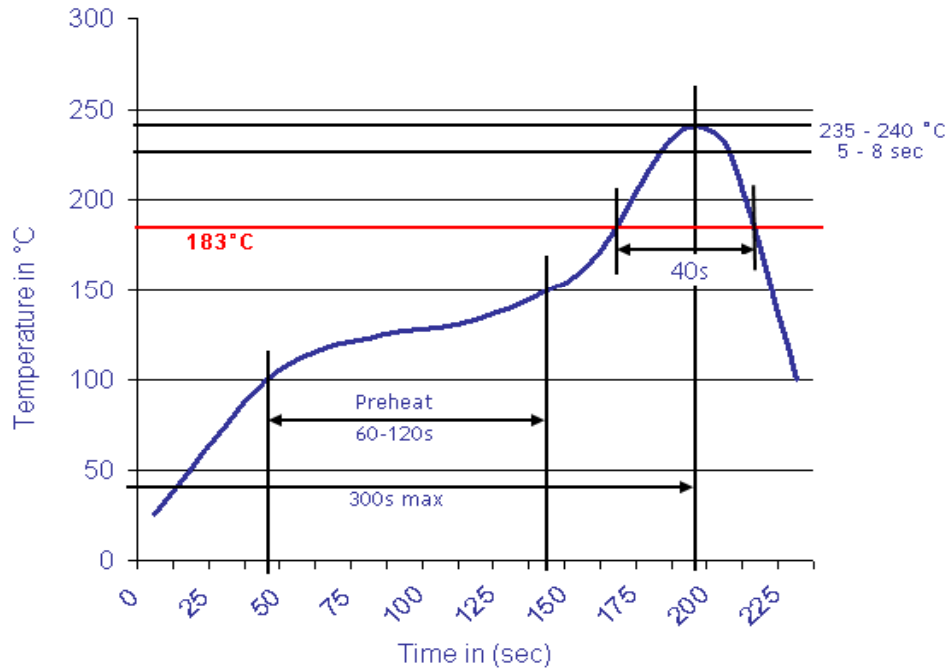
email: info@edcon-components.com



Soldering Profile for Lead Free Soldering

Soldering Profile for Reflow Soldering

Classification Reflow Profile (JEDEC J-STD-020C)



SMD Detector SWITCH

Part No.: **Q22015**

DRW:	Jason	CHKD	Wilson	MATL:	Wilson	TOLERANCE	Mason	DATE	17.03.2021
APPD:	Schumi			FINISH	Jamy		Sheet No.	4 from 4	

Customer: