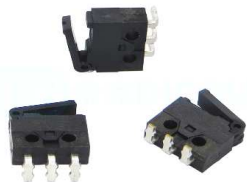


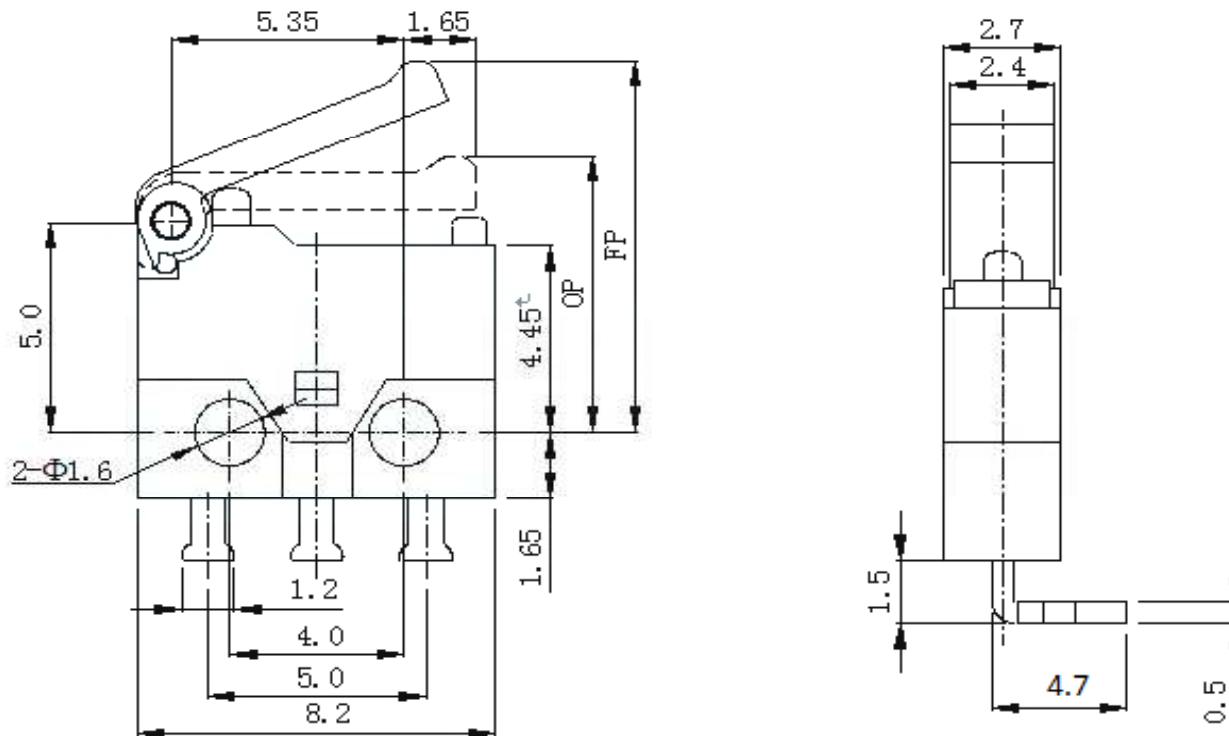
EDCON-COMPONENTS



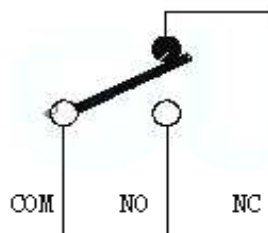
SPECIFICATION:

Rated Voltage:	DC6V
Rated Current:	0,3A
Contact Resistance:	≤ 50mΩ
Operating Force:	10 ~60gr
Resilience:	RF
Free Position:(FP)	7,5 ± 0,5mm
Action Position:(OP)	6,7 ± 0,5mm
Return Position (RP)	
Stroke:	PT
Sensitivity:	BT ≤5ms
Mechanical:	
Mechanical Life:	100.000 cycles,
Electrical Life:	50.000 cycles,
Applicable Temperature:	.-25°C + 80°C
Insulation Resistance:	≥100MΩ DC250V
	Applicable Humidity <85% RH
Withstanding Voltage:	AC 250V 1 minute

Drawing / Dimension (mm)



SCHEMATIC



Tolerances unless otherwise specified (mm)				
x	x.x	x.xx	x.xxx	Angle
±	±	±	±	±3°
DRW:	Jason	CHKD	Wilson	MATL:
APPD:	Schumi		FINISH	Jamy
			Sheet No.	1 from 5

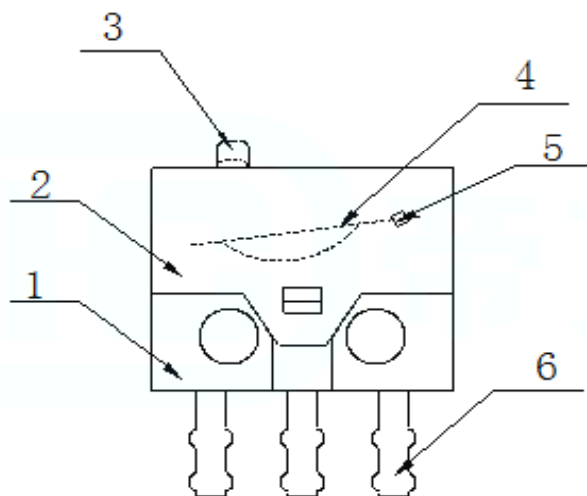
Mikro SWITCH 8,2x6,5mm

Part No.: **Q19058**

Customer:



Structure Chart



NO.	品名
1	Base底座
2	Case上盖
3	Button按钮
4	Spring Plate弹片
5	Contact接点
6	Terminal端子

Mikro SWITCH 8,2x6,5mm

Part No.: **Q19058**

Customer:

DRW:	Jason	CHKD	Wilson	MATL:	Wilson	TOLERANCE	Mason	DATE	14.11.2021
APPD:	Schumi			FINISH	Jamy		Sheet No.		3 from 5

EDCON-COMPONENTS



Ordering Informations

Serie	Switch Type	Lever Style Code (Ax)	Operating force (Bx)	Special function	Special function	ROHS	Packing
Q19058	1	A0	Bx	C0	D0	R	BU

1= 0,3A/ DC6		B0= 60gr	C0= No function	D0= No function	R= ROHS conform	BU= Bulk Ware
		B1= 30gr			N= Non ROHS	TY= Tray Packing
						IV= Individual Packing

Order Code	Operating Force (gf)	
	OF	
B0	60	±25gf
B1	30	±15gf

Mikro SWITCH 8,2x6,5mm	
Part No.:	Q19058
Customer:	

DRW:	Jason	CHKD	Wilson	MATL:	Wilson	TOLERANCE	Mason	DATE	14.11.2021
APPD:	Schumi			FINISH	Jamy		Sheet No.		4 from 5



Soldering Profile for Lead Free Soldering

Soldering Profile for Reflow Soldering

Classification Reflow Profile (JEDEC J-STD-020C)



Mikro SWITCH 8,2x6,5mm

Part No.: **Q19058**

Customer:

DRW:	Jason	CHKD	Wilson	MATL:	Wilson	TOLERANCE	Mason	DATE	14.11.2021
APPD:	Schumi			FINISH	Jamy		Sheet No.	5 from 5	