

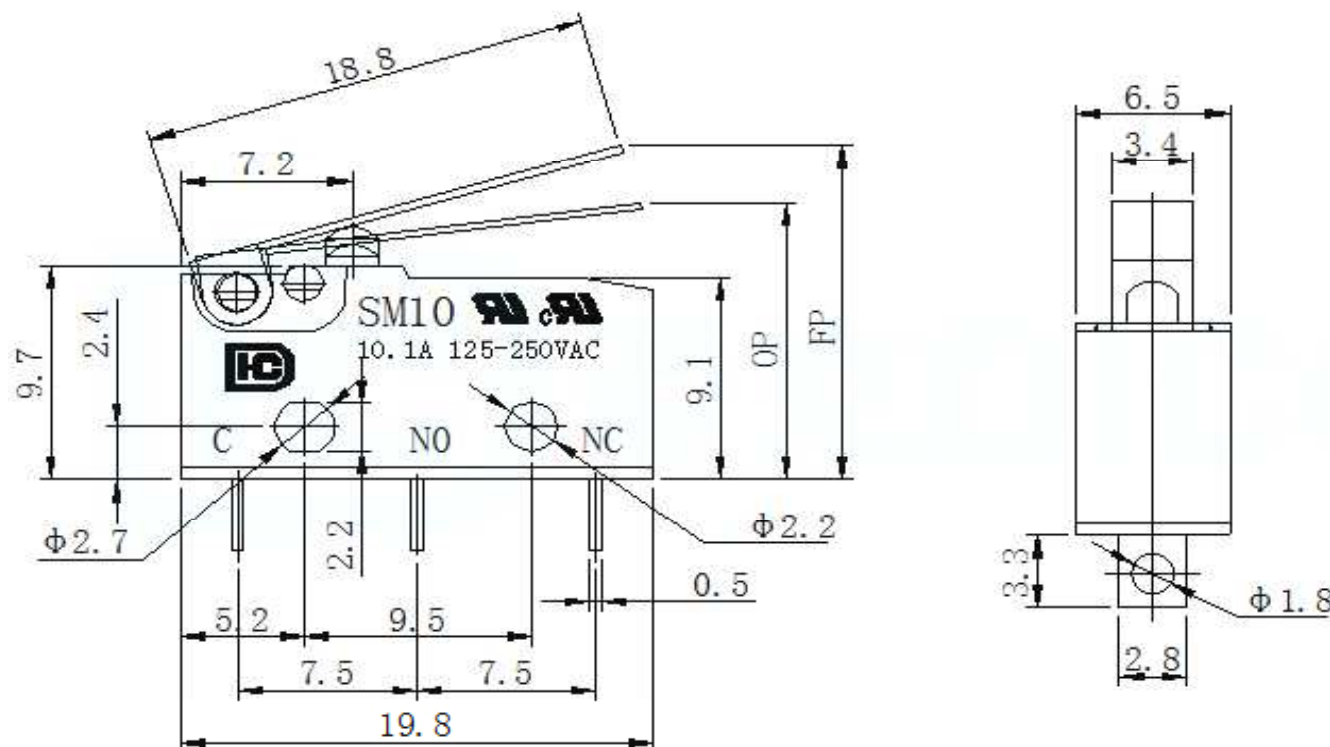
# EDCON-COMPONENTS



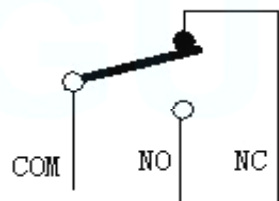
## SPECIFICATION:

**Rated Voltage:** 125 / 250VAC  
**Rated Current:** 10A/125//250VAC  
**Contact Resistance:** ≤ 100mΩ / DC500V  
**Operating Force:**  
**Resilience:** RF  
**Free Position:(FP)** 15,5 ± 1,0mm  
**Action Position:(OP)** 13,0 ± 1,0mm  
**Return Position (RP)**  
**Stroke:** PT  
**Sensitivity:** BT  
  
**Mechanical:**  
**Mechanical Life:** 1.000.000 cycles,  
 2,5 Welding Process Manual Welding  
**Electrical Life:** 10.000 cycles  
**Applicable Temperature:** -25°C + 85°C  
**Insulation Resistance:** ≥100MΩ DC500V  
 Applicable Humidity <85% RH  
**Withstanding Voltage:** AC 1500V 1 minute

## Drawing / Dimension (mm)



## SCHEMATIC



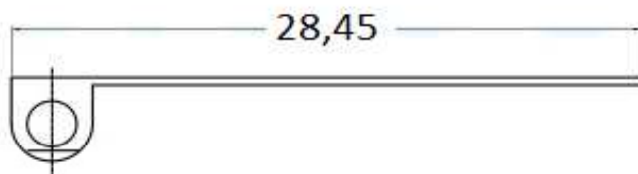
Tolerances unless otherwise specified (mm)									
x	x.x	x.xx	x.xxx	Angle					
±	±	±	±	±3°					
DRW:	Jason	CHKD	Wilson	MATL:	Wilson	TOLERANCE	Mason	DATE	13.11.2021
APPD:	Schumi			FINISH	Jamy		Sheet No.		1 from 4

<b>THT Mikro SWITCH</b>	
<b>19,8x10,6mm</b>	
Part No.:	<b>Q19050</b>
Customer:	

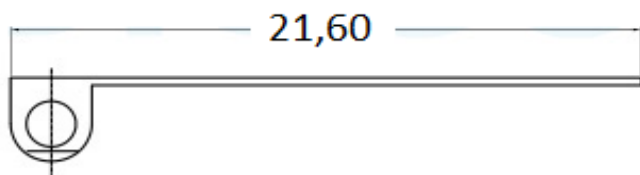
# EDCON-COMPONENTS



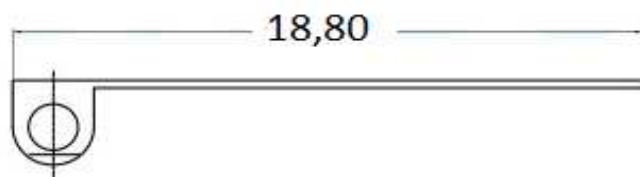
## Lever Style (Ax)



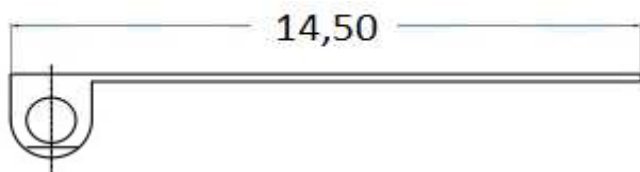
Order Code = A1



Order Code = A2



Order Code = A3



Order Code = A4



Order Code = A5

Order Code	Operating Force (gf)		
	OF		
B0	150		
B1	175		
B2	190		
B3	220		
B4	250		

**THT Mikro SWITCH**  
**19,8x10,6mm**

Part No.: **Q19050**

Customer:

DRW:	Jason	CHKD	Wilson	MATL:	Wilson	TOLERANCE	Mason	DATE	13.11.2021
APPD:	Schumi			FINISH	Jamy		Sheet No.		2 from 4

[www.edcon-components.com](http://www.edcon-components.com)

email: [info@edcon-components.com](mailto:info@edcon-components.com)

# EDCON-COMPONENTS



## Ordering Informations

Serie	Switch Type	Lever Style Code (Ax)	Operating force (Bx)	Special function	Special function	ROHS	Packing
<b>Q19050</b>	<b>1</b>	<b>A0</b>	<b>Bx</b>	<b>C0</b>	<b>D0</b>	<b>R</b>	<b>BU</b>

<b>1= 10A/125/250VAC</b>	<b>A0= without Lever</b>	<b>B0= 150gr</b>	<b>C0= No function</b>	<b>D0= No function</b>	<b>R= ROHS conform</b>	<b>BU= Bulk Ware</b>
	<b>A1= Type A1</b>	<b>B1= 175gr</b>			<b>N= Non ROHS</b>	<b>TY= Tray Packing</b>
	<b>A2= Type A2</b>	<b>B2= 190gr</b>				
	<b>A3= Type A3</b>	<b>B3= 220gr</b>				
	<b>A4= Type A4</b>	<b>B3= 250gr</b>				<b>IV= Individual Packing</b>
	<b>A5= Type A5</b>					

**THT Mikro SWITCH  
19,8x10,6mm**

Part No.: **Q19050**

DRW:	Jason	CHKD	Wilson	MATL:	Wilson	TOLERANCE	Mason	DATE	13.11.2021
APPD:	Schumi			FINISH	Jamy		Sheet No.		3 from 4

Customer:  
email: info@edcon-components.com



Soldering Profile for Lead Free Soldering

Soldering Profile for Reflow Soldering

## Classification Reflow Profile (JEDEC J-STD-020C)



**THT Mikro SWITCH  
19,8x10,6mm**

Part No.: **Q19050**

DRW:	Jason	CHKD	Wilson	MATL:	Wilson	TOLERANCE	Mason	DATE	13.11.2021
APPD:	Schumi			FINISH	Jamy		Sheet No.	4 from 4	Customer: