

EDCON-COMPONENTS



SPECIFICATION:

Frequency Range: 0,25MHz ~ 180 Mhz
 Operation Mode: TTL or CMOS
 Operating Temperature: look ordering Code

Frequency Stability: look ordering Code

Drive Level: look ordering Code

Dimensions (mm)

Length: 12,9mm
 Wide: 12,9mm
 Height: 5,3mm

Technical and Mechanical Explanation

Frequency Stability	All conditions	Look order Code			
Symetry	AT 1/2 Vdd	45 / 55%			
Input Voltage	Vol. (max.)	0,4V / 0,5V			
	2,4/ 4,5V	3,0V			
Rise / Fall Time	AT	5ns max.			
	0,1vdd~0,9Vdd				
Driving Ability	Cmos load max.	15pf / 50pf			
	TTL load max.	10TTL			
Start-up time	Load Range	5ms max. (15pf) 10ms (50pf)			
E / D Function	#1 OPEN	PIN #8 OPEN	#5 OPEN		
	#1 > =2,2V	PIN #8 OPEN	#5 OPEN		
	#1 < =1,8V	PIN #8 HIGHZ	#5 HIGHZ		
PAD Connection		PIN#1 E/D	PIN#8 OUT	PIN#1 E/D	PIN#5 OUT
		PIN#7 GND	PIN#14 Vdd	PIN#4 GND	PIN#8 Vdd

Quarz Chrystal

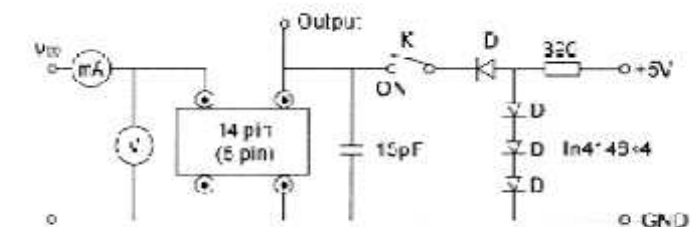
Part No.: **O13001**

DRW:	HQ	CHKD	Wilson	MATL:	WHX	TOLERANCE	John	DATE	10.12.2013	Customer:
APPD:	YQ	HHQ		FINISH	XM		Sheet No.	1 from 4		

EDCON-COMPONENTS

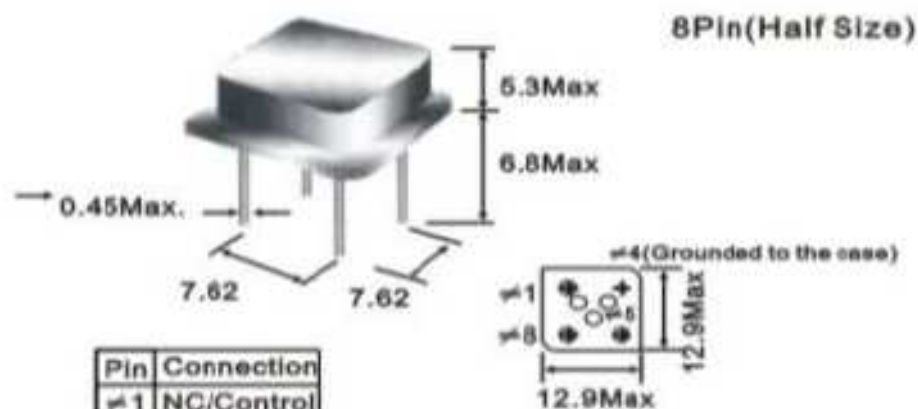


Circuit Principle



K → ON: Test TTL Logic
K → OFF: Test HCMOS

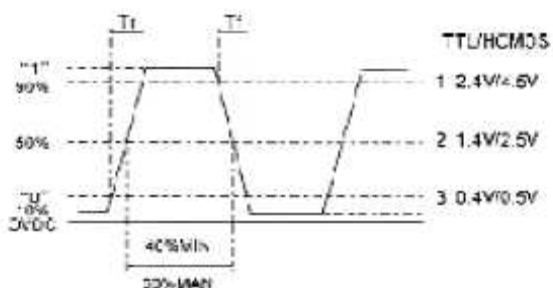
Drawing



Pin	Connection
≠1	NC/Control
≠4	GND
≠5	Output
≠8	+5.0V _{DC}

(Unit:mm)

Output Wave Form



Quarz Chrystal

Part No.: **O13001**

DRW:	HQ	CHKD	Wilson	MATL:	WHX	TOLERANCE	John	DATE	10.12.2013	Customer:
APPD:	YQ	HHQ		FINISH	XM		Sheet No.	2 from 4		

www.edcon-components.com

email: info@edcon-components.com

Copyright by S.Tiede

EDCON-COMPONENTS



Ordering Informations

Serie	Frequency	Output Mode	Supply Voltage	Operating Temperature	F-Stability	Rohs Conform	Packing			
O13001	xx	A	0	A	1	R	TU			

xMxxxxx Mhz (max 6 Letters)	A= TTL Output	0= 5Volt	A= 0 ~ +60°C	1= 100ppm	R= ROHS Conform	TU= Bulk Ware
	B= CMOS Output	1= 3,3Volt	B= -10°C ~ +60°C	2= 50ppm	N= NON ROHS Conform	TY= Tray-Packing
			C= -20°C ~ +70°C	3= 25ppm		
			D= -40°C ~ +85°C	4= 10ppm		

Quarz Chrystal

Part No.: **O13001**

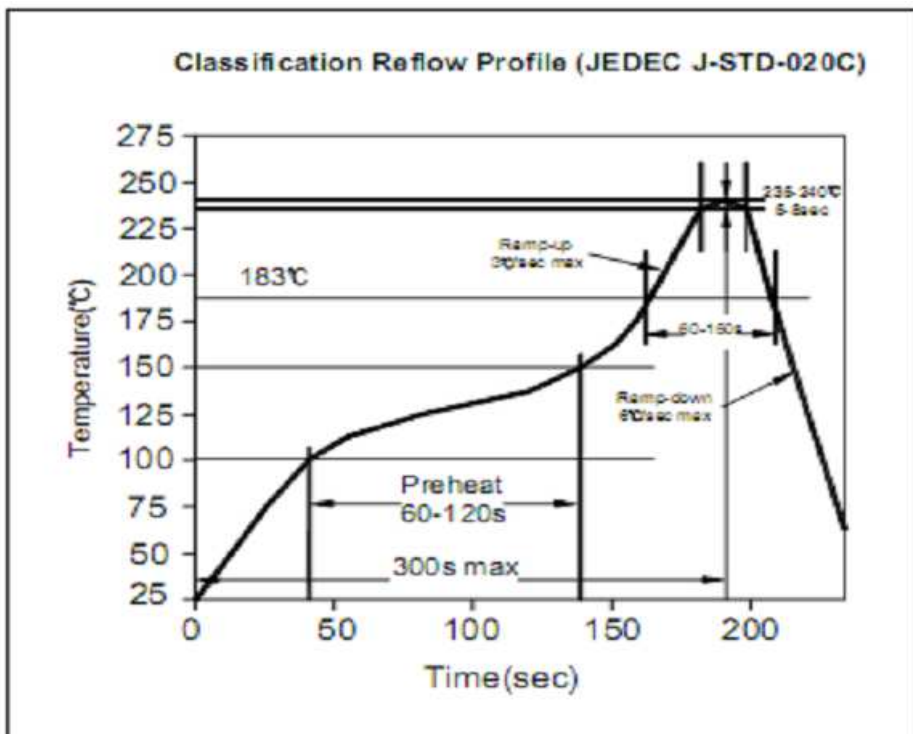
DRW:	HQ	CHKD	Wilson	MATL:	WHX	TOLERANCE	John	DATE	10.12.2013
APPD:	YQ	HHQ		FINISH	XM		Sheet No.		3 from 4

Customer:

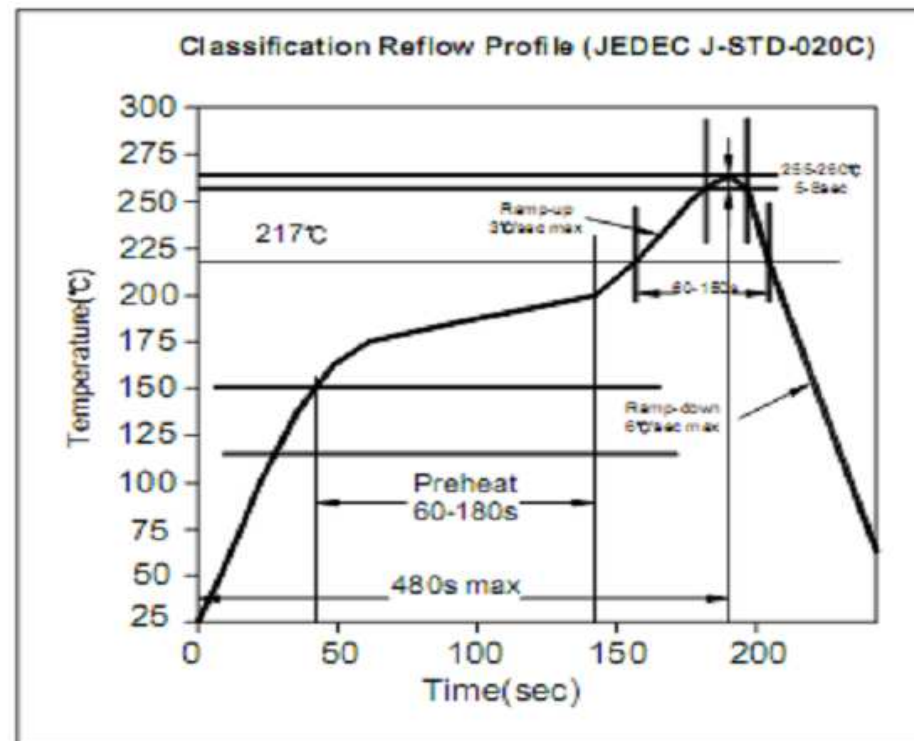


Soldering Conditions

Lead Soldering Conditions



Lead Free Soldering Conditions



Quarz Chrystal

Part No.: **O13001**

Customer:

DRW:	HQ	CHKD	Wilson	MATL:	WHX	TOLERANCE	John	DATE	10.12.2013
APPD:	YQ	HHQ		FINISH	XM		Sheet No.	4 from 4	