

# EDCON-COMPONENTS



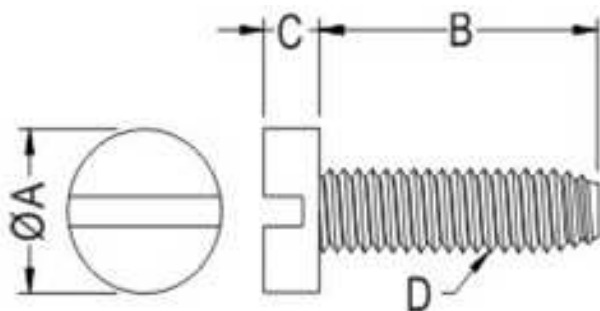
## Technical Informations

Material: Nylon 66 (UL)  
 Flame Class: 94V-2  
 Color: Natural  
 Temperature Range: -40°C ~ +85°C

## Ordering Code table

Order Code	D	B	A	C
A01	M5	6,0	8,5	3,3
A02	M5	8,0	8,5	3,3
A03	M5	10,0	8,5	3,3
A04	M5	12,0	8,5	3,3
A05	M5	16,0	8,5	3,3
A06	M5	18,0	8,5	3,3
A07	M5	20,0	8,5	3,3
A08	M5	25,0	8,5	3,3
A09	M5	30,0	8,5	3,3
A10	M5	35,0	8,5	3,3
A11	M5	40,0	8,5	3,3
A12	M5	50,0	8,5	3,3
A13				
A14				
A15				
A16				
A17				
A18				
A19				
A20				
A21				
A22				
A23				
A24				
A25				
A26				
A27				

## Dimension (mm)



**Metric Slotted Cheese  
Head Screw**

Part No.: **N14158**

DRW:	Jason	CHKD	Wilson	MATL:	Wilson	TOLERANCE	Mason	DATE	31.01.2013	Customer:
APPD:	Schumi			FINISH	Jamy		Sheet No.	1 from 1		

# EDCON-COMPONENTS



## Ordering Informations

Serie	Order Code	Material	Color	ROHS	Packing					
<b>N14158</b>	<b>A01</b>	<b>NY</b>	<b>WH</b>	<b>R</b>	<b>BU</b>					

<b>A01=</b> Length	<b>NY=</b> Nylon	<b>WH=</b> White	<b>R=</b> ROHS Conform	<b>BU=</b> Bulk-Ware			
			<b>N=</b> NON ROHS Conform	<b>IV=</b> Individual Packing			

<b>Metric Slotted Cheese Head Screw</b>	
Part No.:	<b>N14158</b>
Customer:	

DRW:	Jason	CHKD	Wilson	MATL:	Wilson	TOLERANCE	Mason	DATE	31.01.2013
APPD:	Schumi			FINISH	Jamy		Sheet No.		2 from 2