

# EDCON-COMPONENTS



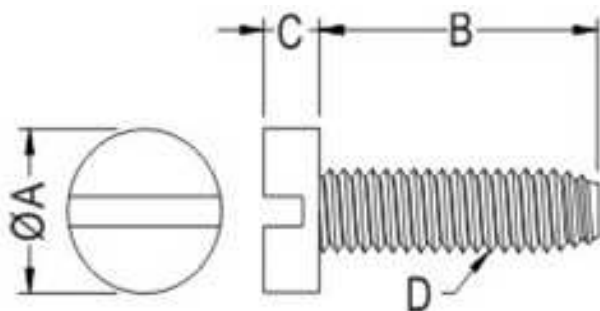
## Technical Informations

Material: Nylon 66 (UL)  
 Flame Class: 94V-2  
 Color: Natural  
 Temperature Range: -40°C ~ +85°C

## Ordering Code table

Order Code	D	B	A	C
A01	M6	6,0	10,0	3,9
A02	M6	6,5	10,0	3,9
A03	M6	8,0	10,0	3,9
A04	M6	10,0	10,0	3,9
A05	M6	12,0	10,0	3,9
A06	M6	16,0	10,0	3,9
A07	M6	20,0	10,0	3,9
A08	M6	25,0	10,0	3,9
A09	M6	30,0	10,0	3,9
A10	M6	40,0	10,0	3,9
A11	M6	50,0	10,0	3,9
A12	M6	60,0	10,0	3,9
A13				
A14				
A15				
A16				
A17				
A18				
A19				
A20				
A21				
A22				
A23				
A24				
A25				
A26				
A27				

## Dimension (mm)



**Metric Slotted Cheese  
Head Screw**

Part No.: **N14021**

DRW:	Jason	CHKD	Wilson	MATL:	Wilson	TOLERANCE	Mason	DATE	31.01.2013	Customer:
APPD:	Schumi			FINISH	Jamy		Sheet No.	1 from 1		

# EDCON-COMPONENTS



## Ordering Informations

Serie	Order Code	Material	Color	ROHS	Packing					
<b>N14021</b>	<b>A01</b>	<b>NY</b>	<b>WH</b>	<b>R</b>	<b>BU</b>					

<b>A01=</b> Length	<b>NY=</b> Nylon	<b>WH=</b> White	<b>R=</b> ROHS Conform	<b>BU=</b> Bulk-Ware					
			<b>N=</b> NON ROHS Conform	<b>IV=</b> Individual Packing					

<b>Metric Slotted Cheese Head Screw</b>	
Part No.:	<b>N14021</b>
Customer:	

DRW:	Jason	CHKD	Wilson	MATL:	Wilson	TOLERANCE	Mason	DATE	31.01.2013
APPD:	Schumi			FINISH	Jamy			Sheet No.	2 from 2